

Institutional Equity Research

MARKET LENS

NIFTY 9816

Support 9760

9700

Resistance 9840

9900

IN FOCUS

Stock in Focus **HINDUSTAN ZINC**

Positional Pick **INDIABULLS HOUSING FIN.**

Intraday Pick **DEVELOPMENT CREDIT BANK**

Intraday Pick **TVS MOTOR COMPANY**

July 13, 2017

EQUITY INDICES

Indices	Absolute Change		Percentage Change		
	Last Trade	Change	1-D	1-Mth	YTD
Domestic					
BSE Sensex	31,804.8	57.7	0.2%	2.3%	19.4%
CNX Nifty	9,816.1	30.1	0.3%	2.2%	19.9%
S&P CNX 500	8,585.5	40.6	0.5%	2.1%	23.0%
SENSEX 50	10,180.0	31.2	0.3%	2.3%	20.8%

International	Last Trade		Change		
	Last Trade	Change	1-D	1-Mth	YTD
DJIA	21,532.1	123.1	0.6%	1.0%	9.0%
NASDAQ	6,261.2	67.9	1.1%	0.7%	16.3%
NIKKEI	20,127.5	29.1	0.1%	1.1%	5.3%
HANGSENG	26,318.0	274.4	1.0%	1.8%	19.6%
MSCI Emerging Mkts	1,029.9	11.7	1.1%	2.0%	19.4%

ADRs / GDRs

	Last Trade	Change	1-D	1-Mth	YTD
Dr. Reddy's Lab (ADR)	41.8	0.3	0.7%	3.5%	-7.6%
Tata Motors (ADR)	35.6	0.7	1.9%	1.5%	3.4%
Infosys (ADR)	15.6	0.2	1.1%	3.3%	5.5%
ICICI Bank (ADR)	9.1	0.2	2.1%	2.1%	33.5%
HDFC Bank (ADR)	89.9	1.4	1.6%	0.9%	48.1%
Axis Bank (GDR)	39.2	0.1	0.4%	0.1%	19.4%
Reliance Ind (GDR)	46.3	0.5	1.1%	12.7%	46.6%

COMMODITY MARKET

Key Commodities	Last Trade	Change	1-D	1-Mth	YTD
Brent Crude (\$/bl)	47.7	(0.1)	-0.2%	-2.2%	-16.1%
Silver (\$/Oz)	16.0	0.0	0.2%	-5.6%	0.2%
Gold (\$/Oz)	1,221.6	1.1	0.1%	-3.5%	6.5%
Copper LME (\$/MT)	5,879.5	32.3	0.6%	2.4%	6.5%
Aluminium LME (\$/MT)	1,872.0	(11.3)	-0.6%	-0.4%	9.9%
Baltic Dry	830.0	10.0	1.2%	-4.6%	-13.6%

CURRENCY RATES

	Last Trade	Change	1-D	1-Mth	YTD
USD/INR	64.5	64.6	-0.1%	0.1%	-5.0%
EUR/INR	73.9	73.6	0.4%	2.2%	3.2%

RATES

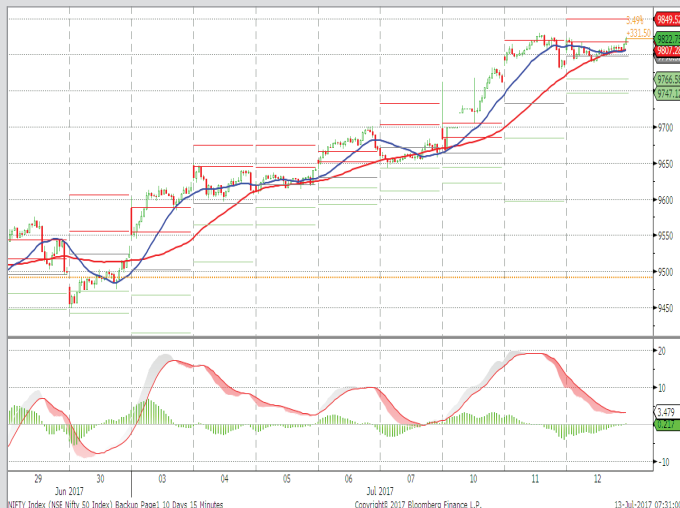
	Last Trade	Change	1-D	1-Mth	YTD
T-Bill - 91 D	6.2	6.3	-0.5%	-0.6%	0.7%
10 Year G-sec Yield	6.5	6.5	0.1%	-0.4%	-0.7%

INVESTMENT ACTIVITY (RS. CR)

Category	BUY	SELL	NET	Prev
FII	4,562.9	4,201.6	361.3	182.1
DII	2,603.7	2,934.3	-330.6	335.8

EXCHANGE TURNOVER

Exchange	Rs Crore
BSE Equity	3,748.03
BSE Derivatives	43.92
NSE Equity	25,076.9
NSE Derivatives	5,54,923.3



STOCK IN FOCUS

- **Hindustan Zinc Ltd (HZL)** outperformed the Nifty Metal Index and closed 1% higher.
- The company recently announced its 4QFY17 results and delivered the best ever quarterly performance primarily on account of record mined metal volume and strong zinc prices
- Its EBITDA rose by 187% YoY and 35% QoQ to Rs37.5bn. Mined metal output increased 66% YoY and 13% QoQ to 312,000 tonnes, while Zinc realisation increased 65% YoY and 10% QoQ to US\$2,770/tonne
- Going forward, we continue to remain optimistic on zinc prices, led by deficit due to closure of mining and smelting capacities along with depleting inventories. It must be noted that in CY16 LME zinc prices increased 63% YoY.
- **We are positive on the stock with a Target Price of Rs 301.**

Positional Pick

INDIABULLS HOUSING FINANCE LTD (PREVIOUS CLOSE: 1108) BUY

For today's trade, long position can be initiated in the range of Rs1100-1080 for the target of Rs1187 and with a strict stop loss of Rs1060.

Intraday Picks

DEVELOPMENT CREDIT BANK LTD (PREVIOUS CLOSE: 196) BUY

For today's trade, long position can be initiated at around Rs194 for the target of Rs198-200 and with a strict stop loss of Rs191.

TVS MOTOR COMPANY LTD (PREVIOUS CLOSE: 564) BUY

For today's trade, long position can be initiated at around Rs563 for the target of Rs572-579 and with a strict stop loss of Rs557.

Institutional Equity Research

MARKET LENS

NIFTY
9816
IN FOCUS

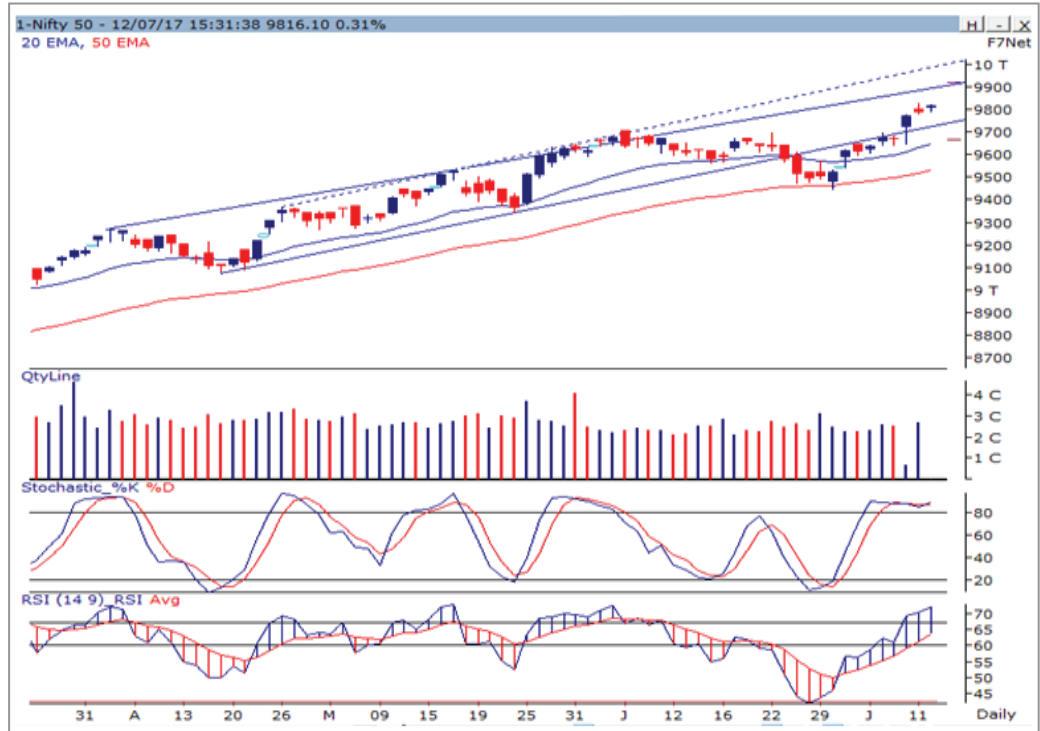
July 13, 2017

Support	9760	Stock in Focus	HINDUSTAN ZINC
	9700	Positional Pick	INDIABULLS HOUSING FIN.
Resistance	9840	Intraday Pick	DEVELOPMENT CREDIT BANK
	9900	Intraday Pick	TVS MOTOR COMPANY

Technical Research

MARKET SYNOPSIS

- On Wednesday, NSE-NIFTY began the session on a firm note tracking positive global cues, but later oscillated in the narrow range (i.e. in 9,788-9,825 range) and finally, finished trade at 9,816 mark with the gain of 30 points.
- NSE Cash segment reported turnover of Rs25,077 crore as compared to Rs26,457 crore earlier.
- Overall market breadth remained positive, where 975 stocks advanced against 702 declined stocks.
- Positive trend was observed across all the sectoral indices during the day barring IT index (down by 0.3%). PSU Bank index emerged as a top gainer with the increase of 1.3%. However, rest of the sectoral indices has reported gain in between 0.2% to 0.7%.



NSE-NIFTY OUTLOOK

- NSE-NIFTY failed to record new life-time-high during the day amidst sluggishness in the market, but managed to close above 9,800 mark. As mentioned earlier, our view will remain positive on NIFTY, but such kind of sideways movement or some decline cannot be ruled out, as RSI reached to prior reversal point and Stochastic is also consolidating around its overbought zone. In case of major declines, its short-term and medium-term moving averages (i.e. 20-day and 50-day EMAs) will continue to work as key reversal point for the index, which are placed at 9,650 and at 9,530 levels respectively. However, on the higher side, NIFTY will face major hurdles around 9,900 and then at 10,000 levels.
- As for the day, support is placed at around 9,760 and then at 9,700 levels, while resistance is observed at 9,840 and then around at 9,900 levels.

Institutional Equity Research

MARKET LENS

NIFTY

9816

IN FOCUS

July 13, 2017

Support

9760

Stock in Focus

HINDUSTAN ZINC

9700

Positional Pick

INDIABULLS HOUSING FIN.

Resistance

9840

Intraday Pick

DEVELOPMENT CREDIT BANK

9900

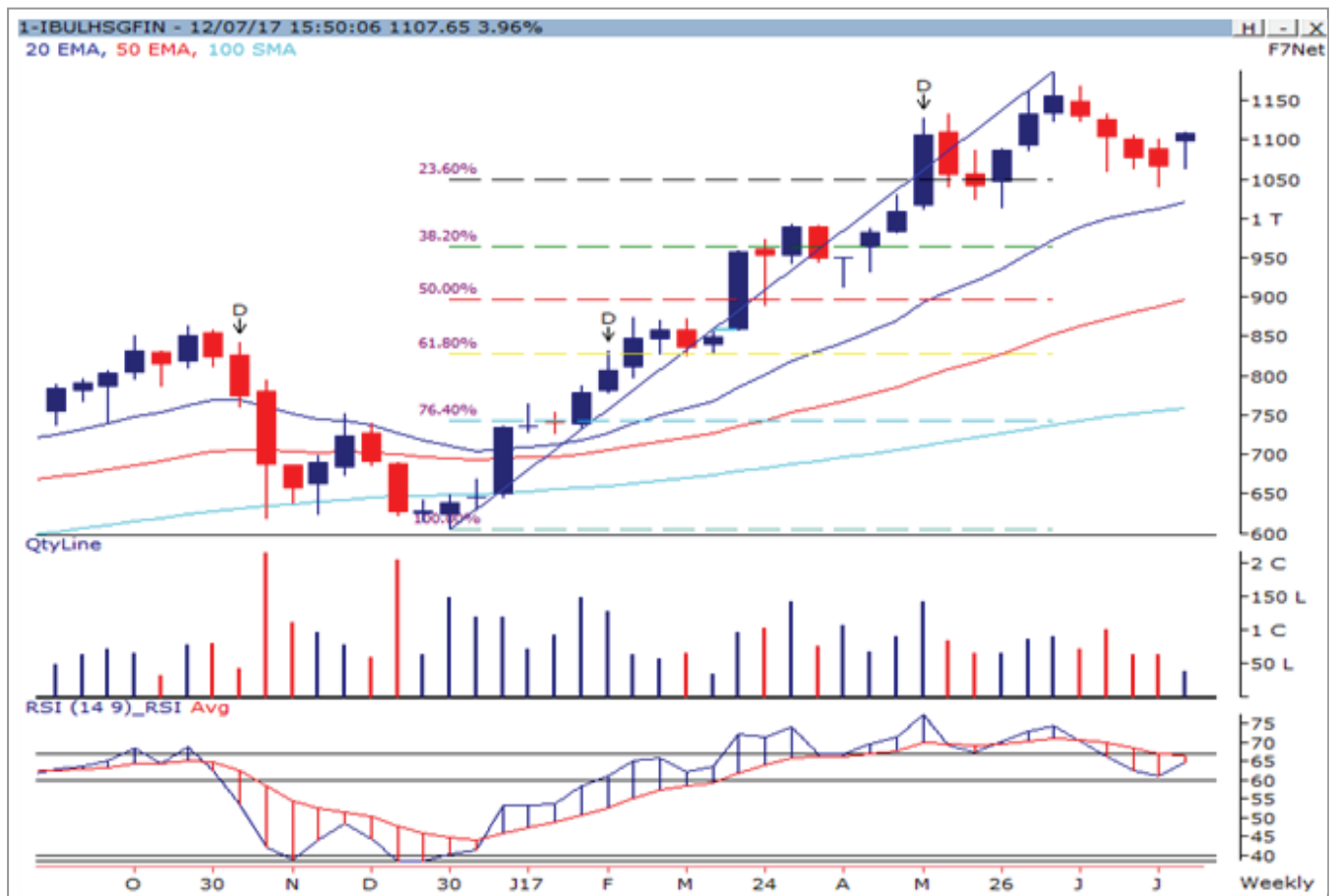
Intraday Pick

TVS MOTOR COMPANY

Technical Research

Positional Pick: INDIABULLS HOUSING FINANCE LTD

PREV.CLOSE: 1108 | RECO: BUY | IN: 1100-1080 | TARGET: 1187 | STOP LOSS: 1060



- ▶ Indiabulls Housing Finance is in the strong up-trend, as stock reversed after taking support of its 23.6% Fibonacci Retracement level of prior multi-month leap (from Rs605 to 1187) and managed to recover partial losses.
- ▶ Due to recent recovery in the prices, key technical indicator-RSI also reversed from sub-60 mark and about to give positive cross-over, which is signaling strength in the stock.
- ▶ As per the current weekly set-up, we believe that Indiabulls Housing Finance will soon resume its up-trend and revisit the life-time-high.
- ▶ In case of any negative surprise, strong base formation around its 23.6% Fibonacci Retracement level will save the stock from falling.
- ▶ Thus, long position can be initiated in the range of Rs1100-1080 for the target of Rs1187 and with a strict stop loss of Rs1060.

Institutional Equity Research

MARKET LENS

NIFTY 9816 IN FOCUS

July 13, 2017

Support	9760	Stock in Focus	HINDUSTAN ZINC
	9700	Positional Pick	INDIABULLS HOUSING FIN.
Resistance	9840	Intraday Pick	DEVELOPMENT CREDIT BANK
	9900	Intraday Pick	TVS MOTOR COMPANY

Derivatives Snapshot

- Nifty continued its positive momentum with broader momentum in midcaps and high beta sectors to close near the high point of the day. Nifty closed up by 30 points at 9,816 levels. Among the nifty stocks 37 stocks advanced and 14 declined during the day.
- Sectorally all sectors had a strong up move with PSU Banks, Metals, Media to gain by 1.4%, 0.7% and 0.5% while other sectors ended 0.3% average.
- Broader market indices remained strong with NIFTY 100,200 and 500 to up by 0.5% average while midcap indices and small cap indices gained by 0.7% and 0.9% respectively.
- Nifty July futures ends with 6 points premium at 9,822 mark, while on other hand, Bank Nifty July futures ended with the premium of 26 points at 23,721 mark.
- Nifty has closed near to all time high and sustenance above 9,700 levels will continue to maintain a positive bias for the markets. Nifty 9600 PE has the highest OI of 67 lakhs shares while on the upside now 10,000 series has the highest call OI of 43 lakhs shares.

Sectoral Activity: Amongst sectoral index, Media and Auto remained in focus with positive momentum.

Stock Activity: ZEEL and Tata Motors observed build up in long position.

TOP 5 PRICE GAINERS

Stock Name	LTP	% Price Chg	% Vol Chg	%OI Chg	Support	Pivot	Resistance
BIOCON LIMITED.	366.75	13.62%	1571.68%	51.39%	348	359	378
SINTEX INDUSTRIES LTD	29.50	12.81%	438.03%	29.11%	27	29	31
PTC INDIA LIMITED	110.85	10.30%	1879.84%	57.18%	104	108	115
EQUITAS HOLDINGS LIMITED	168.00	6.87%	642.00%	6.92%	160	165	173
NCC LIMITED	94.45	6.30%	340.29%	5.87%	91	93	97

TOP 5 PRICE LOSERS

Stock Name	LTP	% Price Chg	% Vol Chg	%OI Chg	Support	Pivot	Resistance
INFIBEAM INCORP. LIMITED	1104.10	-2.34%	-4.79%	2.81%	1089	1114	1129
GMR INFRASTRUCTURE LTD.	18.05	-2.17%	207.09%	12.07%	18	18	19
MINDTREE LIMITED	514.30	-1.98%	22.01%	5.47%	510	518	522
AJANTA PHARMA LIMITED	1474.80	-1.92%	-6.32%	1.86%	1462	1477	1490
TORRENT PHARMACEUTICALS L	1310.35	-1.77%	-75.74%	-8.20%	1291	1313	1332

TOP 5 OI GAINERS

Stock Name	LTP	% Price Chg	% Vol Chg	%OI Chg	Support	Pivot	Resistance
PTC INDIA LIMITED	110.85	10.30%	1879.84%	57.18%	104	108	115
BIOCON LIMITED.	366.75	13.62%	1571.68%	51.39%	348	359	378
MAHANAGAR GAS LTD.	1002.25	1.94%	297.71%	46.44%	988	1003	1017
SINTEX INDUSTRIES LTD	29.50	12.81%	438.03%	29.11%	27	29	31
MRPL	127.10	3.50%	209.27%	24.01%	124	126	129

TOP 5 OI LOSERS

Stock Name	LTP	% Price Chg	% Vol Chg	%OI Chg	Support	Pivot	Resistance
TORRENT PHARMACEUTICALS L	1310.35	-1.77%	-75.74%	-8.20%	1291	1313	1332
UPL LIMITED	864.40	1.23%	69.23%	-5.27%	853	864	875
UJJIVAN FIN. SERVC. LTD.	331.90	3.25%	150.95%	-5.01%	323	329	338
VOLTAS LTD	473.60	2.27%	170.25%	-4.76%	466	470	478
INDUSIND BANK LIMITED	1577.00	1.04%	-46.06%	-4.00%	1566	1573	1585

Institutional Equity Research

MARKET LENS

NIFTY 9816 IN FOCUS

July 13, 2017

Support	9760	Stock in Focus	HINDUSTAN ZINC
	9700	Positional Pick	INDIABULLS HOUSING FIN.
Resistance	9840	Intraday Pick	DEVELOPMENT CREDIT BANK
	9900	Intraday Pick	TVS MOTOR COMPANY

Derivatives Snapshot

TOP 5 "RISE IN % DEL CHG"

Stock Name	LTP	% Price Chg	% Vol Chg	%Del Chg	Support	Pivot	Resistance
PTC INDIA LIMITED	110.85	10.30%	1879.84%	810.39%	104	108	115
BIOCON LIMITED.	366.75	13.62%	1571.68%	688.11%	348	359	378
EQUITAS HOLDINGS LIMITED	168.00	6.87%	642.00%	610.04%	160	165	173
GMR INFRASTRUCTURE LTD.	18.05	-2.17%	207.09%	353.17%	18	18	19
NCC LIMITED	94.45	6.30%	340.29%	335.66%	91	93	97

TOP 5 "DECLINE IN % DEL CHG"

Stock Name	LTP	% Price Chg	% Vol Chg	%Del Chg	Support	Pivot	Resistance
DALMIA BHARAT LIMITED	2663.25	0.61%	-91.09%	-97.44%	2637	2663	2690
MAX FINANCIAL SERV LTD	593.55	-0.33%	-65.30%	-78.10%	589	594	599
ORACLE FIN SERV SOFT LTD.	3681.25	1.36%	-70.29%	-78.08%	3638	3664	3707
ENGINEERS INDIA LTD	156.95	-0.06%	-57.70%	-77.20%	156	157	158
BHEL	140.55	0.57%	-72.19%	-76.25%	140	141	141

SECTORAL ACTIVITY

	Value Total OI	Average of OI Change %	Average of Price Change %	Total Volume	Average of Volume Change %
Consumer Discretionary	604954335	1.94%	1.00%	109260864	12.74%
Consumer Staples	177756150	2.78%	0.63%	27223628	-4.51%
Energy	256523611	7.97%	1.49%	49284388	88.62%
Financials	1687213005	1.89%	1.35%	169054723	21.11%
Health Care	181724100	3.71%	0.91%	32593173	74.87%
Industrials	197225200	1.07%	0.73%	28569557	16.47%
Information Technology	124884600	2.55%	-0.27%	11993335	-39.04%
Materials	1414463600	1.62%	1.00%	250824272	18.46%
Telecommunication Services	286165800	1.93%	1.33%	34525302	-6.14%
Utilities	1018621500	6.39%	1.18%	99529062	126.99%
Grand Total	5949531901	2.70%	0.99%	812858304	27.01%

Institutional Equity Research

MARKET LENS

NIFTY 9816 IN FOCUS

July 13, 2017

Support	9760	Stock in Focus	HINDUSTAN ZINC
	9700	Positional Pick	INDIABULLS HOUSING FIN.
Resistance	9840	Intraday Pick	DEVELOPMENT CREDIT BANK
	9900	Intraday Pick	TVS MOTOR COMPANY

Pivot Table

Name	LTP	Support 2	Support 1	Pivot	Resistance 1	Resistance 2
Nifty 50	9816.1	9772.3	9794.2	9809.6	9831.5	9846.8
Nifty Bank	23695.5	23439.0	23567.2	23651.9	23780.1	23864.8
ACC LIMITED	1706.0	1608.7	1657.3	1683.7	1732.3	1758.7
ADANI PORT & SEZ LTD	373.9	370.0	371.9	373.6	375.6	377.3
AMBUJA CEMENTS LTD	261.0	253.8	257.4	259.6	263.2	265.4
ASIAN PAINTS LIMITED	1133.7	1118.4	1126.1	1131.7	1139.4	1145.0
AUROBINDO PHARMA LTD	694.7	684.0	689.4	696.5	701.8	708.9
AXIS BANK LIMITED	506.8	501.3	504.0	507.0	509.7	512.7
BAJAJ AUTO LIMITED	2785.9	2749.0	2767.4	2792.7	2811.1	2836.4
BANK OF BARODA	163.5	159.4	161.4	162.7	164.8	166.1
BHARTI AIRTEL LIMITED	397.1	390.1	393.6	398.0	401.5	405.8
BOSCH LIMITED	24187.3	23707.0	23947.2	24097.9	24338.1	24488.8
BHARAT PETROLEUM CORP LT	683.7	674.2	679.0	683.0	687.7	691.7
CIPLA LTD	540.0	533.7	536.8	540.2	543.3	546.7
COAL INDIA LTD	253.5	250.8	252.1	254.4	255.8	258.1
DR. REDDY'S LABORATORIES	2690.1	2640.6	2665.4	2693.4	2718.2	2746.2
EICHER MOTORS LTD	28258.5	27811.4	28034.9	28181.7	28405.2	28552.0
GAIL (INDIA) LTD	369.9	359.1	364.5	368.6	374.0	378.1
HCL TECHNOLOGIES LTD	854.0	840.4	847.2	852.9	859.7	865.3
HDFC LTD	1640.0	1616.1	1628.0	1638.0	1650.0	1660.0
HDFC BANK LTD	1681.3	1648.5	1664.9	1674.9	1691.3	1701.4
HERO MOTOCORP LIMITED	3718.8	3665.2	3692.0	3734.5	3761.3	3803.8
HINDALCO INDUSTRIES LTD	200.6	197.3	199.0	200.7	202.3	204.0
HINDUSTAN UNILEVER LTD.	1131.7	1091.6	1111.6	1125.0	1145.0	1158.4
INDIABULLS HSG FIN LTD	1107.7	1058.6	1083.1	1097.5	1122.0	1136.3
ICICI BANK LTD.	292.4	285.9	289.1	291.9	295.1	297.9
INDUSIND BANK LIMITED	1577.0	1554.2	1565.6	1573.4	1584.8	1592.6
BHARTI INFRATEL LTD.	420.3	399.3	409.8	416.1	426.6	432.8
INFOSYS LIMITED	972.4	961.5	966.9	974.2	979.7	987.0
INDIAN OIL CORP LTD	392.6	385.1	388.9	393.7	397.5	402.3
ITC LTD	328.9	323.8	326.3	330.0	332.5	336.2
KOTAK MAHINDRA BANK LTD	956.7	945.2	950.9	957.0	962.7	968.7
LARSEN & TOUBRO LTD.	1739.6	1723.0	1731.3	1744.0	1752.3	1765.0
LUPIN LIMITED	1140.6	1127.3	1134.0	1143.4	1150.0	1159.4
MAHINDRA & MAHINDRA LTD	1376.7	1361.5	1369.1	1382.6	1390.2	1403.7
MARUTI SUZUKI INDIA LTD.	7476.7	7415.7	7446.2	7465.6	7496.1	7515.5
NTPC LTD	164.1	162.0	163.0	163.7	164.7	165.4
OIL AND NATURAL GAS CORP.	162.9	158.4	160.6	163.3	165.5	168.1
POWER GRID CORP. LTD.	214.0	210.6	212.3	213.7	215.4	216.7
RELIANCE INDUSTRIES LTD	1511.1	1483.7	1497.4	1511.2	1524.9	1538.7
STATE BANK OF INDIA	287.7	281.2	284.4	286.4	289.6	291.6
SUN PHARMACEUTICAL IND L	562.4	556.1	559.3	563.1	566.3	570.1
TATA MOTORS LIMITED	461.0	453.3	457.1	460.5	464.3	467.7
TATA MOTORS DVR 'A' ORD	274.4	270.5	272.4	274.5	276.4	278.4
TATA POWER CO LTD	83.1	82.0	82.5	83.3	83.8	84.5
TATA STEEL LIMITED	559.1	552.2	555.7	558.4	561.9	564.6
TATA CONSULTANCY SERV LT	2439.5	2397.8	2418.6	2451.0	2471.8	2504.2
TECH MAHINDRA LIMITED	387.3	382.2	384.8	387.2	389.7	392.1
ULTRATECH CEMENT LIMITED	4191.3	4132.2	4161.7	4180.6	4210.1	4229.0
VEDANTA LIMITED	259.9	256.1	258.0	259.8	261.7	263.5
WIPRO LTD	263.8	259.1	261.5	263.6	266.0	268.1
YES BANK LIMITED	1515.5	1496.7	1506.1	1514.4	1523.8	1532.1
ZEE ENTERTAINMENT ENT LTD	510.1	504.7	507.4	509.8	512.5	514.9

Institutional Equity Research

MARKET LENS

NIFTY
9816
IN FOCUS

July 13, 2017

Support

9760

Stock in Focus

HINDUSTAN ZINC

9700

Positional Pick INDIABULLS HOUSING FIN.

Resistance

9840

Intraday Pick DEVELOPMENT CREDIT BANK

9900

Intraday Pick TVS MOTOR COMPANY

Simple Moving Average

Scrip Name	Close Rate	20-SMA	50-SMA	100-SMA	200-SMA	HIGH_52WEEK	LOW_52WEEK
NIFTY	9816.1	9627.0	9552.5	9315.9	8864.6	9830.1	7893.8
BANK NIFTY	23695.5	23471.1	23211.0	22215.8	20628.8	23964.8	17606.9
SENSEX 50	10180.0	9985.1	9894.8	9636.8	9154.1	10180.0	8144.6
ACC	1706.0	1618.2	1635.9	1548.0	1488.1	1756.7	1256.6
ADANI PORTS	373.9	368.8	356.9	338.2	309.9	382.7	214.6
AMBUJACEM	261.0	246.3	245.7	241.0	233.4	281.7	191.0
ASIANPAINT	1133.7	1132.8	1138.2	1094.2	1048.2	1225.2	849.6
AUROPHARMA	694.7	671.5	620.7	641.4	691.2	895.0	503.1
AXISBANK	506.8	508.5	508.5	506.4	495.2	638.3	424.4
BAJAJ-AUTO	2785.9	2790.3	2852.5	2845.6	2793.3	3120.0	2510.0
BANKBARODA	163.5	163.2	174.6	172.3	166.7	202.5	135.3
BHARTIARTL	397.1	377.2	370.6	361.6	340.0	410.2	283.1
BHEL	140.6	136.7	148.7	157.5	145.5	182.8	116.1
BOSCH LTD	24187.3	23922.0	23723.6	23087.4	22215.3	25670.9	17671.6
BPCL	683.7	437.0	464.0	455.2	439.9	512.8	353.8
CIPLA	540.0	543.4	542.9	563.9	569.6	621.3	480.2
COALINDIA	253.5	250.4	262.4	280.5	296.1	350.0	242.6
DRREDDY	2690.1	2672.5	2617.8	2671.2	2890.8	3689.9	2380.4
EICHERMOT	28258.5	27856.2	28129.2	26541.0	24857.8	30051.0	19411.0
GAIL	369.9	366.4	388.9	388.1	357.0	433.7	268.3
GRASIM	1265.6	1205.2	1167.3	1115.7	1009.6	1375.0	781.9
HCLTECH	854.0	845.5	850.8	846.8	827.8	909.6	710.3
HDFC	1640.0	1638.3	1598.2	1527.1	1418.9	1682.2	1183.2
HDFCBANK	1681.3	1671.6	1624.8	1528.4	1384.0	1748.0	1158.0
HEROMOTOCO	3718.8	3736.4	3661.9	3455.4	3333.0	3880.6	2849.5
HINDALCO	200.6	195.7	195.2	193.0	180.3	210.4	130.4
HINDUNILVR	1131.7	1098.5	1058.3	978.4	909.7	1150.0	782.0
ICICIBANK	292.4	290.7	285.2	269.1	255.2	305.2	215.1
IDEA	85.5	82.2	82.9	89.9	84.4	123.5	65.8
INDUSINDBK	1577.0	1509.1	1476.0	1429.8	1301.9	1581.2	1036.7
INFRA TEL	420.3	388.6	380.8	353.1	353.3	422.4	281.8
INFY	972.4	946.0	954.5	973.2	978.0	1196.1	901.0
ITC	328.9	319.5	305.1	289.7	266.8	367.7	222.0
KOTAKBANK	956.7	969.2	957.9	905.6	832.8	1004.7	692.5
LT	1739.6	1147.4	1159.6	1107.9	1026.5	1222.6	863.4
LUPIN	1140.6	1100.7	1168.8	1303.0	1394.2	1750.0	1036.2
M&M	1376.7	1377.1	1374.0	1336.4	1298.9	1509.0	1141.4
MARUTI	7476.7	7320.8	7106.8	6607.5	6063.4	7500.5	4301.0
NTPC	164.1	159.5	159.4	161.5	160.9	178.3	142.9
ONGC	162.9	162.2	172.1	180.6	185.7	211.8	144.7
POWERGRID	214.0	209.3	207.6	203.0	194.6	215.0	160.7
RELIANCE	1511.1	1426.4	1371.3	1333.4	1189.6	1550.0	930.0
SBIN	287.7	282.5	288.8	284.1	271.3	315.3	222.1
SUNPHARMA	562.4	544.7	569.5	623.3	653.7	855.0	492.7
TATAMOTORS	461.0	445.5	450.1	455.7	480.7	598.4	417.3
TATAPOWER	83.1	81.0	81.3	83.2	80.0	91.2	67.0
TATASTEEL	559.1	531.6	499.6	488.5	453.6	562.0	344.3
TCS	2439.5	2391.8	2446.8	2436.3	2369.0	2744.8	2051.9
TECHM	387.3	385.8	402.4	434.2	446.3	517.5	356.7
ULTRACEMCO	4191.3	4049.6	4173.4	4064.2	3843.1	4533.1	3050.0
WIPRO	263.8	258.5	260.7	254.5	244.0	288.9	204.1
YESBANK	1515.5	1467.0	1484.4	1503.4	1377.3	1651.9	1090.6
ZEEL	510.1	501.8	511.6	517.7	502.5	589.9	427.7

Institutional Equity Research

MARKET LENS

NIFTY 9816 IN FOCUS

July 13, 2017

Support	9760	Stock in Focus	HINDUSTAN ZINC
	9700	Positional Pick	INDIABULLS HOUSING FIN.
Resistance	9840	Intraday Pick	DEVELOPMENT CREDIT BANK
	9900	Intraday Pick	TVS MOTOR COMPANY

Bulk Deals Snapshot

Deal Date	Scrip Code	Company	Client Name	Deal Type*	Quantity	Price **
12/7/2017	539265	AMRAFIN	SHAUMA VANIJYA PRATISTHAN LIMITED	B	74,400	60
12/7/2017	534691	COMCL	RATHOD MANOJ CHHAGANLAL HUF	S	167,602	38.07
12/7/2017	534691	COMCL	RATHOD MANOJ CHHAGANLAL HUF	B	154,820	38.03
12/7/2017	540613	GEL	DEVICHAND PURMAL	S	111,000	42.84
12/7/2017	509567	GOACARBON	ILLUMINATI TRADING PRIVATE LIMITED	S	46,045	350.1
12/7/2017	509567	GOACARBON	ILLUMINATI TRADING PRIVATE LIMITED	B	45,715	349.6
12/7/2017	509567	GOACARBON	QE SECURITIES	S	38,220	351.42
12/7/2017	509567	GOACARBON	QE SECURITIES	B	45,918	353.36
12/7/2017	513059	GSAUTO	SINGHI DINESH KUMAR HUF	B	99,145	17.25
12/7/2017	504378	NYSSACORP	BALVEER SINGH CHOUDHARY	B	500,000	2.83
12/7/2017	504378	NYSSACORP	FACTS TRADELINK PVT LTD	S	850,000	2.83
12/7/2017	504378	NYSSACORP	PRITI CHOUDHARY	B	350,000	2.83
12/7/2017	538537	OMANSH	GHANSHYAM C JOSHI	S	140,272	13.55
12/7/2017	538537	OMANSH	PARVEEN KUMAR GOYAL	B	150,000	13.55
12/7/2017	536659	PVVINFRA	K VENKATESWARLU	S	9,713	21.5
12/7/2017	536659	PVVINFRA	K VENKATESWARLU	B	33,650	20.69
12/7/2017	536659	PVVINFRA	BANDAPALLI RAMESH	S	595	20.47
12/7/2017	536659	PVVINFRA	BANDAPALLI RAMESH	B	27,400	20.94
12/7/2017	538707	RCCL	VARSHA CHUGH	B	17,000	49.55
12/7/2017	540590	RIDDHICORP	NISHITH SHIRISHBHAI DESAI	B	68,000	135
12/7/2017	540590	RIDDHICORP	BISHAL P MORE	S	30,000	135
12/7/2017	539520	SHAILJA	DHANLAXMI REAL ESTATE PRIVATE LIMITED	S	25,000	13
12/7/2017	539520	SHAILJA	SARVAJANA PROPERTIES PVT LTD	S	30,000	13
12/7/2017	539520	SHAILJA	BURNPUR POWER PVT LTD	S	25,000	13
12/7/2017	531723	STAMPEDE	SHREE BHUVANAKARAM TRADINVEST PVT LTD	S	1,356,095	8.33
12/7/2017	538918	VANICOM	PRASHANT SHANTILAL KATARIA	S	35,000	42.54
12/7/2017	538918	VANICOM	PRASHANT SHANTILAL KATARIA	B	35,000	42.6
12/7/2017	538918	VANICOM	SUSHMA SACHDEVA	S	26,542	43
12/7/2017	538918	VANICOM	GHANSHYAM C JOSHI	B	52,000	42.87
12/7/2017	503657	VEERENRGY	KALPESH DINESHBHAI PATEL	S	65,944	23.51
12/7/2017	503657	VEERENRGY	KALPESH DINESHBHAI PATEL	B	65,944	23.47
12/7/2017	503349	VICTMILL	TIRATH PRADYUMAN PARIKH	B	625	4,215.50
12/7/2017	530627	VIPULORG	RAMESH CHIMANLAL SHAH	S	75,000	113.41

*B - Buy, S - Sell, ** = Weighted Average Trade Price / Trade Price

Institutional Equity Research

MARKET LENS

NIFTY 9816 IN FOCUS

July 13, 2017

Support	9760	Stock in Focus	HINDUSTAN ZINC
	9700	Positional Pick	INDIABULLS HOUSING FIN.
Resistance	9840	Intraday Pick	DEVELOPMENT CREDIT BANK
	9900	Intraday Pick	TVS MOTOR COMPANY

Monthly Economic Calendar

Date Time	Country	Event	Period	Prior
13-Jul-17	US	Initial Jobless Claims	8-Jul	--
14-Jul-17	JN	Industrial Production MoM	May F	--
14-Jul-17	US	CPI MoM	Jun	--
14-Jul-17	IN	Wholesale Prices YoY	Jun	--
18-Jul-17	UK	CPI YoY	Jun	--
18-Jul-17	EC	CPI YoY	Jun F	--
20-Jul-17	AU	Employment Change	Jun	--
20-Jul-17	AU	Unemployment Rate	Jun	--
20-Jul-17	EC	ECB Main Refinancing Rate	20-Jul	--
20-Jul-17	US	Initial Jobless Claims	15-Jul	--
25-Jul-17	IN	Eight Infrastructure Industries	Jun	--
26-Jul-17	UK	GDP QoQ	2Q A	--
26-Jul-17	UK	GDP YoY	2Q A	--
26-Jul-17	US	FOMC Rate Decision (Upper Bound)	26-Jul	1.3%
27-Jul-17	US	Initial Jobless Claims	22-Jul	--
28-Jul-17	JN	Jobless Rate	Jun	--
28-Jul-17	US	GDP Annualized QoQ	2Q A	--
31-Jul-17	JN	Industrial Production MoM	Jun P	--
31-Jul-17	IN	Fiscal Deficit INR Crore	Jun	--

Institutional Equity Research

MARKET LENS

NIFTY 9816 IN FOCUS

July 13, 2017

Support	9760	Stock in Focus	HINDUSTAN ZINC
	9700	Positional Pick	INDIABULLS HOUSING FIN.
Resistance	9840	Intraday Pick	DEVELOPMENT CREDIT BANK
	9900	Intraday Pick	TVS MOTOR COMPANY

Corporate Actions

Ex-Dividend

Company Name	Ex-Date	Purpose
City Union Bank Limited	13-Jul-17	Bonus 1:10
Zuari Global Limited	13-Jul-17	Dividend - Re 1 Per Share
Dewan Housing Finance Corporation Limited	13-Jul-17	Annual General Meeting/Dividend - Rs 3/- Per Share
Andhra Bank	13-Jul-17	Annual General Meeting
Camlin Fine Sciences Limited	13-Jul-17	Annual General Meeting
Atul Limited	13-Jul-17	Dividend - Rs 10/- Per Share
Coromandel International Limited	13-Jul-17	Annual General Meeting/Dividend - Rs 5/- Per Share
Gujarat Lease Financing Limited	13-Jul-17	Annual General Meeting
Gujarat Sidhee Cement Limited	13-Jul-17	Annual General Meeting
IIFL Holdings Limited	13-Jul-17	Annual General Meeting
Kirloskar Brothers Limited	13-Jul-17	Dividend - Re 1/- Per Share
Mahindra Lifespace Developers Limited	13-Jul-17	Annual General Meeting/ Dividend - Rs 6/- Per Share
Mafatlal Finance Limited	13-Jul-17	Annual General Meeting
Lumax Industries Limited	13-Jul-17	Annual General Meeting/Dividend - Rs 14.50 Per Share
Mahindra & Mahindra Limited	13-Jul-17	Annual General Meeting/Dividend - Rs 13/- Per Share
Larsen & Toubro Limited	13-Jul-17	Bonus 1:2
Info Edge (India) Limited	13-Jul-17	Annual General Meeting/ Dividend - Rs 1.50 Per Share
RPG Life Sciences Limited	13-Jul-17	Annal General Meeting/Dividend - Rs 2.80 Per Share
R. S. Software (India) Limited	13-Jul-17	Annual General Meeting
NK Industries Limited	13-Jul-17	Annual General Meeting
Onward Technologies Limited	13-Jul-17	Annual General Meeting/Dividend - Re 1 Per Share
Sasken Technologies Limited	13-Jul-17	Dividend - Rs 4.50 Per Share
MphasiS Limited	13-Jul-17	Annual General Meeting/Dividend - Rs 17/- Per Share
MPS Limited	13-Jul-17	Annual General Meeting
Reliance Industries Limited	13-Jul-17	Dividend - Rs 11/- Per Share
Mukand Engineers Limited	13-Jul-17	Annual General Meeting
Unichem Laboratories Limited	13-Jul-17	Annual General Meeting/Dividend - Rs 3/- Per Share

Result Calendar

Company Name	Board Meeting Date	Purpose
Cyient Limited	13-Jul-17	Results
Goa Carbon Limited	13-Jul-17	Results/Others
Grand Foundry Limited	13-Jul-17	Results
Hatsun Agro Product Limited	13-Jul-17	Results/Dividend
Reliance Industrial Infrastructure Limited	13-Jul-17	Results
Tata Consultancy Services Limited	13-Jul-17	Results/Dividend
Bhansali Engineering Polymers Limited	14-Jul-17	Results/Others
Infomedia Press Limited	14-Jul-17	Results
Infosys Limited	14-Jul-17	Results

Institutional Equity Research

MARKET LENS

NIFTY
9816
IN FOCUS

July 13, 2017

Support

9760

Stock in Focus

HINDUSTAN ZINC

9700

Positional Pick INDIABULLS HOUSING FIN.

Resistance

9840

Intraday Pick DEVELOPMENT CREDIT BANK

9900

Intraday Pick TVS MOTOR COMPANY

Result Calendar

Company Name	Board Meeting Date	Purpose
DCB Bank Limited	15-Jul-17	Results
Gruh Finance Limited	15-Jul-17	Results
The Karnataka Bank Limited	15-Jul-17	Results
ACC Limited	17-Jul-17	Results/Dividend
ANG Industries Limited	17-Jul-17	Results/Others
Capri Global Capital Limited	17-Jul-17	Results
Hindustan Media Ventures Limited	17-Jul-17	Results
Indian Metals & Ferro Alloys Limited	17-Jul-17	Results
Jubilant Foodworks Limited	17-Jul-17	Results
Jubilant Life Sciences Limited	17-Jul-17	Results
Linde India Limited	17-Jul-17	Results
Prakash Industries Limited	17-Jul-17	Results
SIL Investments Limited	17-Jul-17	Results
CRISIL Limited	18-Jul-17	Results/Dividend
HIL Limited	18-Jul-17	Results
Hindustan Unilever Limited	18-Jul-17	Results
HT Media Limited	18-Jul-17	Results
Jubilant Life Sciences Limited	18-Jul-17	Results
Maharashtra Scooters Limited	18-Jul-17	Results
Sasken Technologies Limited	18-Jul-17	Results
UltraTech Cement Limited	18-Jul-17	Results
Bajaj Finance Limited	19-Jul-17	Results
Bajaj Finserv Limited	19-Jul-17	Results
GNA Axles Limited	19-Jul-17	Results
Havells India Limited	19-Jul-17	Results
KPIT Technologies Limited	19-Jul-17	Results
Mastek Limited	19-Jul-17	Results
MindTree Limited	19-Jul-17	Results
Sutlej Textiles and Industries Limited	19-Jul-17	Results
ABB India Limited	20-Jul-17	Results
Bajaj Auto Limited	20-Jul-17	Results
Bajaj Holdings & Investment Limited	20-Jul-17	Results
Kansai Nerolac Paints Limited	20-Jul-17	Results
Kotak Mahindra Bank Limited	20-Jul-17	Results
Mahindra CIE Automotive Limited	20-Jul-17	Results
NIIT Technologies Limited	20-Jul-17	Results
Nucleus Software Exports Limited	20-Jul-17	Results
R. S. Software (India) Limited	20-Jul-17	Results/Others
RBL Bank Limited	20-Jul-17	Results
Wipro Limited	20-Jul-17	Results
Ashok Leyland Limited	21-Jul-17	Results
Atul Limited	21-Jul-17	Results
Can Fin Homes Limited	21-Jul-17	Results

Institutional Equity Research

MARKET LENS

NIFTY 9816 IN FOCUS

July 13, 2017

Support	9760	Stock in Focus	HINDUSTAN ZINC
	9700	Positional Pick	INDIABULLS HOUSING FIN.
Resistance	9840	Intraday Pick	DEVELOPMENT CREDIT BANK
	9900	Intraday Pick	TVS MOTOR COMPANY

Reliance Securities Limited (RSL), the broking arm of Reliance Capital is one of the India's leading retail broking houses. Reliance Capital is amongst India's leading and most valuable financial services companies in the private sector. Reliance Capital has interests in asset management and mutual funds, life and general insurance, commercial finance, equities and commodities broking, wealth management services, distribution of financial products, private equity, asset reconstruction, proprietary investments and other activities in financial services. The list of associates of RSL is available on the website www.reliancecapital.co.in. RSL is registered as a Research Analyst under SEBI (Research Analyst) Regulations, 2014

General Disclaimers: This Research Report (hereinafter called 'Report') is prepared and distributed by RSL for information purposes only. The recommendations, if any, made herein are expression of views and/or opinions and should not be deemed or construed to be neither advice for the purpose of purchase or sale of any security, derivatives or any other security through RSL nor any solicitation or offering of any investment /trading opportunity on behalf of the issuer(s) of the respective security(ies) referred to herein. These information / opinions / views are not meant to serve as a professional investment guide for the readers. No action is solicited based upon the information provided herein. Recipients of this Report should rely on information/data arising out of their own investigations. Readers are advised to seek independent professional advice and arrive at an informed trading/investment decision before executing any trades or making any investments. This Report has been prepared on the basis of publicly available information, internally developed data and other sources believed by RSL to be reliable. RSL or its directors, employees, affiliates or representatives do not assume any responsibility for, or warrant the accuracy, completeness, adequacy and reliability of such information / opinions / views. While due care has been taken to ensure that the disclosures and opinions given are fair and reasonable, none of the directors, employees, affiliates or representatives of RSL shall be liable for any direct, indirect, special, incidental, consequential, punitive or exemplary damages, including lost profits arising in any way whatsoever from the information / opinions / views contained in this Report.

Risks: Trading and investment in securities are subject to market risks. There are no assurances or guarantees that the objectives of any of trading / investment in securities will be achieved. The trades/ investments referred to herein may not be suitable to all categories of traders/investors. The names of securities mentioned herein do not in any manner indicate their prospects or returns. The value of securities referred to herein may be adversely affected by the performance or otherwise of the respective issuer companies, changes in the market conditions, micro and macro factors and forces affecting capital markets like interest rate risk, credit risk, liquidity risk and reinvestment risk. Derivative products may also be affected by various risks including but not limited to counter party risk, market risk, valuation risk, liquidity risk and other risks. Besides the price of the underlying asset, volatility, tenor and interest rates may affect the pricing of derivatives.

Disclaimers in respect of jurisdiction: The possession, circulation and/or distribution of this Report may be restricted or regulated in certain jurisdictions by appropriate laws. No action has been or will be taken by RSL in any jurisdiction (other than India), where any action for such purpose(s) is required. Accordingly, this Report shall not be possessed, circulated and/or distributed in any such country or jurisdiction unless such action is in compliance with all applicable laws and regulations of such country or jurisdiction. RSL requires such recipient to inform himself about and to observe any restrictions at his own expense, without any liability to RSL. Any dispute arising out of this Report shall be subject to the exclusive jurisdiction of the Courts in India.

Disclosure of Interest: The research analysts who have prepared this Report hereby certify that the views /opinions expressed in this Report are their personal independent views/opinions in respect of the securities and their respective issuers. None of RSL, research analysts, or their relatives had any known direct /indirect material conflict of interest including any long/short position(s) in any specific security on which views/opinions have been made in this Report, during its preparation. RSL's Associates may have other potential/material conflict of interest with respect to any recommendation and related information and opinions at the time of publication of research report. RSL, its Associates, the research analysts, or their relatives might have financial interest in the issuer company(ies) of the said securities. RSL or its Associates may have received a compensation from the said issuer company(ies) in last 12 months for the brokerage or non brokerage services. RSL, its Associates, the research analysts or their relatives have not received any compensation or other benefits directly or indirectly from the said issuer company(ies) or any third party in last 12 months in any respect whatsoever for preparation of this report.

The research analysts has served as an officer, director or employee of the said issuer company(ies)? : No

RSL, its Associates, the research analysts or their relatives holds ownership of 1% or more, in respect of the said issuer company(ies)? : No

Copyright: The copyright in this Report belongs exclusively to RSL. This Report shall only be read by those persons to whom it has been delivered. No reprinting, reproduction, copying, distribution of this Report in any manner whatsoever, in whole or in part, is permitted without the prior express written consent of RSL.

RSL's activities were neither suspended nor have defaulted with any stock exchange with whom RSL is registered. Further, there does not exist any material adverse order/judgments/strictures assessed by any regulatory, government or public authority or agency or any law enforcing agency in last three years. Further, there does not exist any material enquiry of whatsoever nature instituted or pending against RSL as on the date of this Report.

Important These disclaimers, risks and other disclosures must be read in conjunction with the information / opinions / views of which they form part of.

RSL CIN: U65990MH2005PLC154052. SEBI registration no. (Stock Brokers: NSE - INB / INF / INE 231234833; BSE - INB / INF / INE 011234839, Depository Participants: CDSL IN-DP-257-2016 IN-DP-NSDL-363-2013, Research Analyst: INH000002384); AMFI ARN No.29889.