

Institutional Equity Research

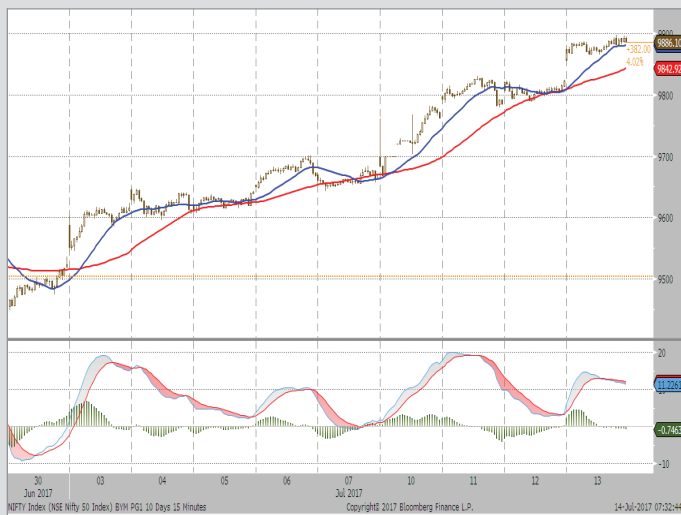
MARKET LENS

NIFTY	9892
Support	9840
	9790
Resistance	9960
	10000

IN FOCUS

Stock in Focus	HDFC
Positional Pick	MOTHERSON SUMI SYS.
Intraday Pick	ADANI PORTS
Intraday Pick	ESCORTS INDIA

July 14, 2017



STOCK IN FOCUS

- ▶ **HDFC** closed 1% higher, outperforming benchmark NIFTY Index by 0.3%
- ▶ Over the last few years, HDFC Ltd has proven its competitive edge over its peers through decent growth in business, stable spreads, well-managed asset quality and better performance in other financial business subsidiaries. Consequently, the stock traded at a premium to its peers with best-in-class return ratios.
- ▶ Visible sign of pick-up in the demand for mortgage loan led by improving affordability, attractive incentive from PMAY scheme and introduction of RERA augur well for sustained growth in loan book for HDFC over next 3-5 years.
- ▶ Reductions in borrowing rates along with rising income levels are expected to contribute towards improving demand for housing loans. Hence, we expect healthy growth in loan disbursements over the next 2-3 years.
- ▶ We expect further improvement in operating performance in coming quarters on the back of healthy NII growth and listing of insurance arm. **Thus, we maintain our BUY recommendation on the stock with an upwardly revised Target Price of Rs1,786, valuing the standalone entity at 3.1x FY19E adjusted BV and subsidiaries fetching Rs773/share (after deducting holding company discount of 15%).**

Positional Pick

MOTHERSON SUMI SYS (PREVIOUS CLOSE: 322) **BUY**

For today's trade, long position can be initiated in the range of Rs321-317 for the target of Rs345 and with a strict stop loss of Rs310.

Intraday Picks

ADANI PORTS (PREVIOUS CLOSE: 376) **BUY**

For today's trade, long position can be initiated at around Rs375 for the target of Rs383-385 and with a strict stop loss of Rs370.

ESCORTS INDIA (PREVIOUS CLOSE: 672) **SELL**

For today's trade, short position can be initiated at around Rs680 for the target of Rs660 and with a strict stop loss of Rs692.

EQUITY INDICES

Indices	Absolute Change		Percentage Change		
	Last Trade	Change	1-D	1-Mth	YTD
Domestic					
BSE Sensex	32,037.4	232.6	0.7%	2.8%	20.3%
CNX Nifty	9,891.7	75.6	0.8%	2.8%	20.8%
S&P CNX 500	8,646.3	60.8	0.7%	2.7%	23.8%
SENSEX 50	10,254.5	74.5	0.7%	2.9%	21.7%

International	Last Trade	Change	Percentage Change		
			1-D	1-Mth	YTD
DJIA	21,553.1	21.0	0.1%	0.8%	9.1%
NASDAQ	6,274.4	13.3	0.2%	1.3%	16.6%
NIKKEI	20,127.6	27.8	0.1%	1.2%	5.3%
HANGSENG	26,350.5	4.4	0.0%	1.8%	19.8%
MSCI Emerging Mkts	1,040.7	10.8	1.0%	2.7%	20.7%

ADRs / GDRs

	Last Trade	Change	1-D	1-Mth	YTD
Dr. Reddy's Lab (ADR)	41.7	(0.2)	-0.4%	0.2%	-8.0%
Tata Motors (ADR)	35.4	(0.2)	-0.5%	0.7%	2.8%
Infosys (ADR)	15.6	(0.1)	-0.5%	2.6%	4.9%
ICICI Bank (ADR)	9.2	0.1	1.3%	2.4%	35.3%
HDFC Bank (ADR)	90.2	0.3	0.4%	1.0%	48.6%
Axis Bank (GDR)	39.4	0.3	0.6%	-0.1%	20.1%
Reliance Ind (GDR)	46.6	0.4	0.8%	9.8%	47.7%

COMMODITY MARKET

Key Commodities	Last Trade	Change	1-D	1-Mth	YTD
Brent Crude (\$/bl)	48.4	(0.1)	-0.1%	2.9%	-14.9%
Silver (\$/Oz)	15.6	(0.1)	-0.5%	-7.5%	-1.8%
Gold (\$/Oz)	1,215.8	(1.8)	-0.1%	-3.6%	6.0%
Copper LME (\$/MT)	5,853.5	(26.0)	-0.4%	3.0%	6.0%
Aluminium LME (\$/MT)	1,906.3	34.3	1.8%	1.5%	11.9%
Baltic Dry	859.0	29.0	3.5%	-0.7%	-10.6%

CURRENCY RATES

	Last Trade	Change	1-D	1-Mth	YTD
USD/INR	64.4	64.5	-0.1%	0.2%	-5.1%
EUR/INR	73.4	73.9	-0.7%	1.8%	2.5%

RATES

	Last Trade	Change	1-D	1-Mth	YTD
T-Bill - 91 D	6.2	6.2	-1.2%	-1.8%	-0.5%
10 Year G-sec Yield	6.5	6.5	0.0%	-0.6%	-0.9%

INVESTMENT ACTIVITY (RS. CR)

Category	BUY	SELL	NET	Prev
FI	5,330.8	5,390.0	(59.2)	361.3
DII	3,269.5	2,990.3	279.1	(330.6)

EXCHANGE TURNOVER

Exchange	Rs Crore
BSE Equity	4,340.7
BSE Derivatives	50.23
NSE Equity	28,366.7
NSE Derivatives	10,04,541.7

Institutional Equity Research

MARKET LENS

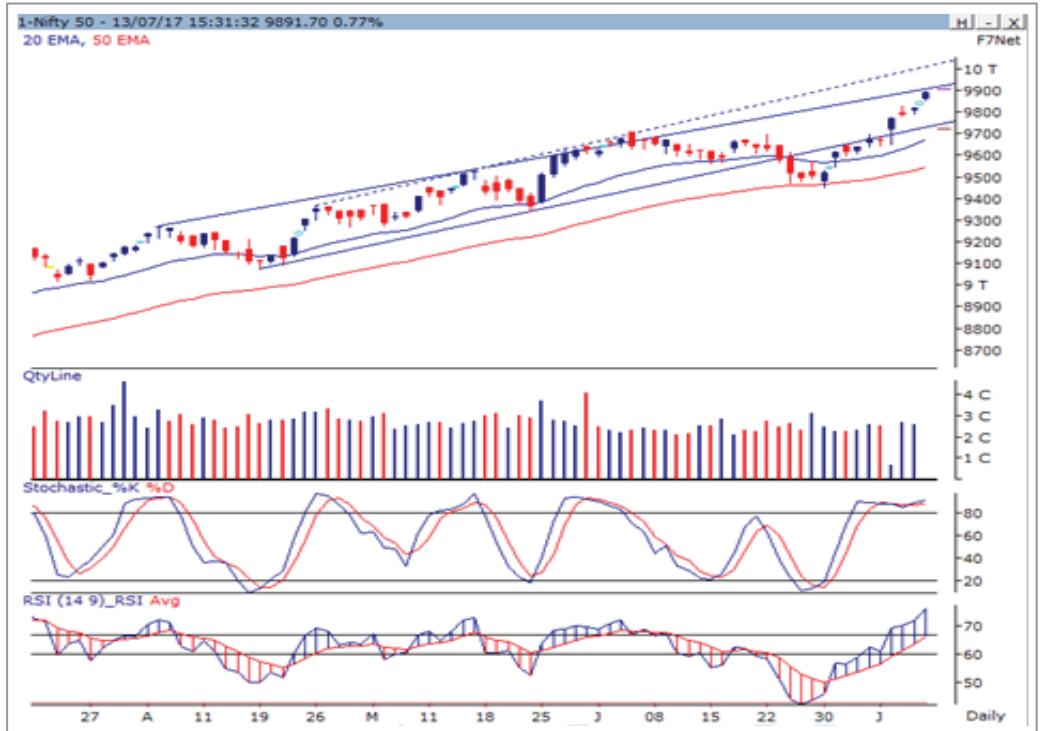
NIFTY	9892	IN FOCUS	
Support	9840	Stock in Focus	HDFC
	9790	Positional Pick	MOTHERSON SUMI SYS.
Resistance	9960	Intraday Pick	ADANI PORTS
	10000	Intraday Pick	ESCORTS INDIA

July 14, 2017

Technical Research

MARKET SYNOPSIS

- ▶ Yesterday, NSE-NIFTY opened above the key intraday resistance of 9,840 level on back of positive global cues and later extended gain. Later, index managed to hold higher levels with a narrow range consolidation and finally, with a late trade rebound ended the day near new life-time-high of 9,897 mark with gain of 76 points at 9,892 level.
- ▶ NSE Cash segment reported turnover of Rs28,367 crore as compared to Rs25,077 crore earlier.
- ▶ Overall market breadth remained flat, where 840 stocks advanced against 843 declined stocks.
- ▶ Positive trend was observed across all the sectoral indices during the day, where Private Bank, Media and FMCG indices emerged as top gainers with the increase of 1%, 1.1% and 1.8% respectively. However, rest of the sectoral indices reported gain in between 0.2% to 0.9%.



NSE-NIFTY OUTLOOK

- ▶ NSE-NIFTY continued its northbound journey and closed on a record high level for straight fourth trading session in a row. Yesterday, NIFTY oscillated in the intraday resistance zone (i.e. in between R1-9,840 and R2-9,900 levels) during the day, signaling strength in the index. Due to recent up-move in the index, RSI managed to cross prior reversal points and Stochastic has given positive cross-over. As mentioned earlier, our view will remain positive on NIFTY and we believe that index will keep recording new highs. However, one should utilize any sideways movement or decline in the market to create fresh long position. On the lower side, its short-term and medium-term moving averages (i.e. 20-day and 50-day EMAs) will continue to work as key reversal point for the index, which are placed at 9,670 and at 9,545 levels respectively. On the higher side, now NIFTY will face major hurdles around the psychological mark-10,000.
- ▶ As for the day, support is placed at around 9,840 and then at 9,790 levels, while resistance is observed at 9,960 and then around at 10,000 levels.

Institutional Equity Research

MARKET LENS

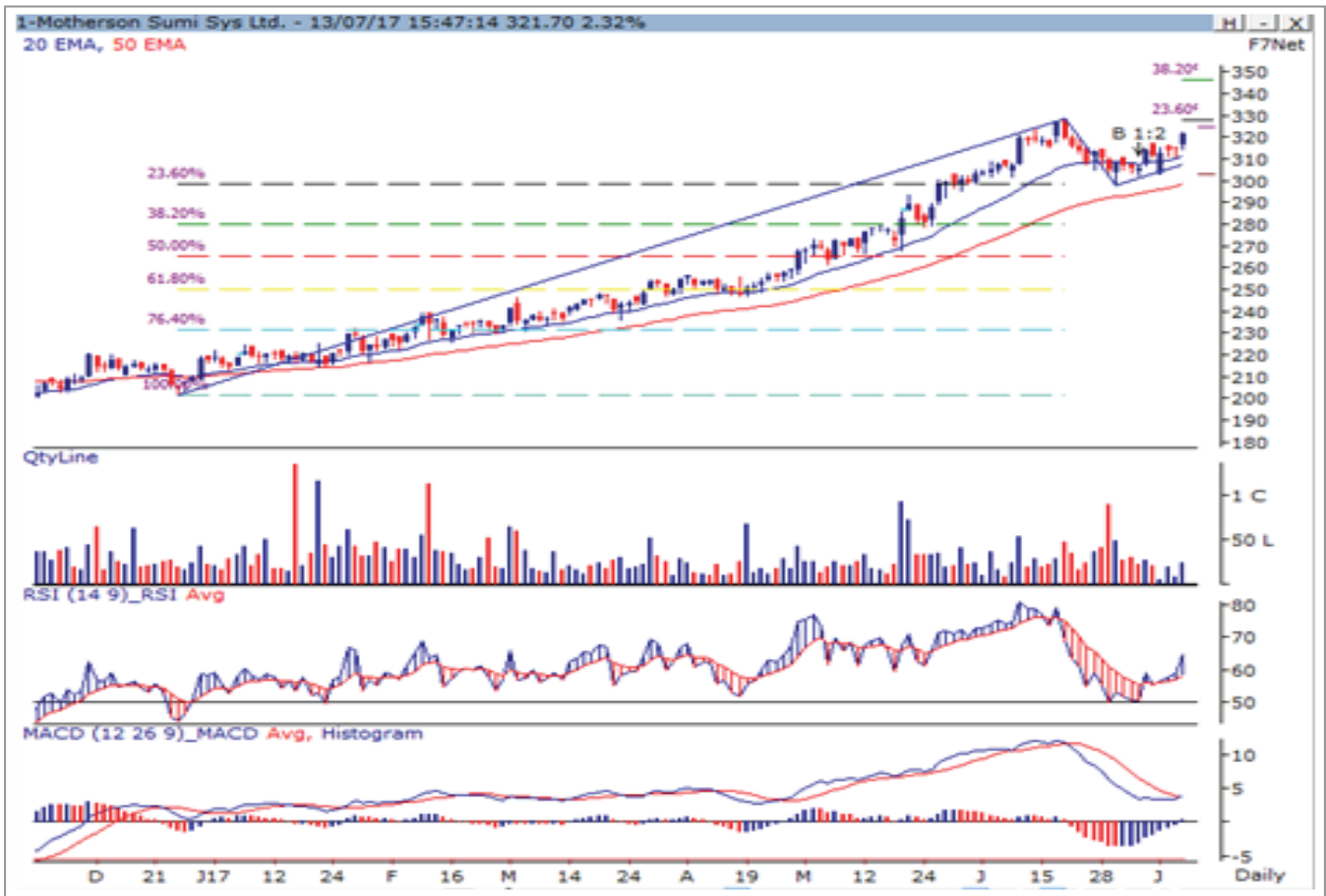
NIFTY	9892	IN FOCUS	
Support	9840	Stock in Focus	HDFC
	9790	Positional Pick	MOTHERSON SUMI SYS.
Resistance	9960	Intraday Pick	ADANI PORTS
	10000	Intraday Pick	ESCORTS INDIA

July 14, 2017

Technical Research

Positional Pick: MOTHERSON SUMI SYS

PREV.CLOSE: 322 | RECO: BUY | IN: 321-317 | TARGET: 345 | STOP LOSS: 310



- ▶ Motherson Sumi is in the strong up-trend, as stock reversed after taking support of its 23.6% Fibonacci Retracement level of prior multi-month rise (from Rs202 to 329) and later, it has managed to recover partial losses.
- ▶ Due to recent recovery in the prices, RSI reversed from the crucial level-50 and MACD has given positive cross-over, which is signaling strength in the stock.
- ▶ As per the current daily set-up, we believe that Motherson Sumi will continue its northward journey and record new high.
- ▶ On the higher side, the stock will face major hurdle around Rs345, which is coinciding with its 38.2% Fibonacci Extension of prior multi-month rally.
- ▶ In case of any negative surprise, its short-term moving average 20-daily EMA will continue to work as key reversal point.
- ▶ Thus, long position can be initiated in the range of Rs321-317 for the target of Rs345 and with a strict stop loss of Rs310.

Institutional Equity Research

## MARKET LENS

**NIFTY 9892 IN FOCUS**

July 14, 2017

Support	9840	Stock in Focus	HDFC
	9790	Positional Pick	MOTHERSON SUMI SYS.
Resistance	9960	Intraday Pick	ADANI PORTS
	10000	Intraday Pick	ESCORTS INDIA

### Derivatives Snapshot

- ▶ Nifty opened higher and continued its positive momentum to close near the high point of the day. Nifty closed up by 76 points at 9,892 levels. Among the nifty stocks 37 stocks advanced and 13 declined during the day.
- ▶ Sectorally all sectors ended positive with the highest gains in FMCG, Banks, Metals and Media to gain by 1.2% average while other sectors ended 0.5% average.
- ▶ Broader market indices remained strong with NIFTY 100,200 and 500 to up by 0.8% average while midcap indices and small cap indices gained by 0.3% and 0.1% respectively.
- ▶ Nifty July futures ends with 4 points discount at 9,887 mark, while on other hand, Bank Nifty July futures ended with the discount of 9 points at 23,879 mark.
- ▶ Nifty has seen a sharp jump from sub 9,500 levels to 9,900 in the past 2 weeks, we believe markets should consolidate or see some minor profit booking from current levels. Nifty 9600 PE and 9500 PE has the highest OI of 64 lakhs shares average while on the upside now 10,000 series has the highest call OI of 44 lakhs shares.

**Sectoral Activity:** Amongst sectoral index, FMCG and Media remained in focus with positive momentum.

**Stock Activity:** ITC and ZEEL observed build up in long position.

#### TOP 5 PRICE GAINERS

Stock Name	LTP	% Price Chg	% Vol Chg	%OI Chg	Support	Pivot	Resistance
SINTEX INDUSTRIES LTD	34.15	15.76%	115.46%	15.25%	32	33	36
TV18 BROADCAST LIMITED	40.90	7.92%	354.42%	6.45%	39	40	42
NATIONAL ALUMINIUM CO LTD	72.65	7.00%	916.48%	26.49%	69	72	75
CAPITAL FIRST LIMITED	750.50	5.74%	353.22%	15.74%	724	739	765
UJJIVAN FIN. SERVC. LTD.	350.55	5.62%	81.74%	51.60%	341	347	356

#### TOP 5 PRICE LOSERS

Stock Name	LTP	% Price Chg	% Vol Chg	%OI Chg	Support	Pivot	Resistance
INDIAN OIL CORP LTD	380.95	-2.97%	78.87%	7.38%	374	385	392
RELIANCE DEF AND ENGI LTD	61.10	-2.47%	144.53%	9.46%	60	62	63
OIL AND NATURAL GAS CORP.	158.90	-2.43%	-30.03%	9.81%	157	161	162
BHARTI INFRA TEL LTD.	410.60	-2.31%	-29.11%	-1.30%	405	413	419
TORRENT PHARMACEUTICALS L	1280.15	-2.30%	4.46%	-5.28%	1263	1293	1310

#### TOP 5 OI GAINERS

Stock Name	LTP	% Price Chg	% Vol Chg	%OI Chg	Support	Pivot	Resistance
UJJIVAN FIN. SERVC. LTD.	350.55	5.62%	81.74%	51.60%	341	347	356
BHARAT PETROLEUM CORP LT	458.55	0.60%	23.64%	50.27%	453	460	465
LARSEN & TOUBRO LTD.	1175.10	1.33%	21.05%	49.42%	1163	1173	1185
CHOLAMANDALAM IN & FIN CO	1166.60	4.99%	270.08%	37.66%	1123	1147	1191
TATA CONSULTANCY SERV LT	2446.40	0.28%	18.35%	28.26%	2425	2448	2470

#### TOP 5 OI LOSERS

Stock Name	LTP	% Price Chg	% Vol Chg	%OI Chg	Support	Pivot	Resistance
EQUITAS HOLDINGS LIMITED	170.25	1.34%	-17.49%	-8.75%	168	170	172
INDIAN BANK	304.55	-0.59%	-37.98%	-7.66%	302	306	309
PAGE INDUSTRIES LTD	16814.10	1.09%	-16.23%	-7.42%	16586	16728	16956
SHREE CEMENTS LTD	18819.40	1.77%	-10.19%	-5.53%	18435	18692	19077
TORRENT PHARMACEUTICALS L	1280.15	-2.30%	4.46%	-5.28%	1263	1293	1310

Institutional Equity Research

## MARKET LENS

**NIFTY 9892 IN FOCUS**

July 14, 2017

Support	9840	Stock in Focus	HDFC
	9790	Positional Pick	MOTHERSON SUMI SYS.
Resistance	9960	Intraday Pick	ADANI PORTS
	10000	Intraday Pick	ESCORTS INDIA

## Derivatives Snapshot

### TOP 5 "RISE IN % DEL CHG"

Stock Name	LTP	% Price Chg	% Vol Chg	%Del Chg	Support	Pivot	Resistance
DALMIA BHARAT LIMITED	2708.80	1.71%	340.41%	1139.56%	2674	2696	2731
NATIONAL ALUMINIUM CO LTD	72.65	7.00%	916.48%	813.50%	69	72	75
GODFREY PHILLIPS INDIA LT	1274.80	1.70%	109.78%	518.91%	1259	1268	1284
KAJARIA CERAMICS LTD	675.15	0.10%	267.74%	426.14%	669	675	681
AXIS BANK LIMITED	511.90	1.02%	303.86%	353.63%	508	512	517

### TOP 5 "DECLINE IN % DEL CHG"

Stock Name	LTP	% Price Chg	% Vol Chg	%Del Chg	Support	Pivot	Resistance
BATA INDIA LTD	564.95	0.55%	-74.82%	-89.19%	561	565	569
GMR INFRASTRUCTURE LTD.	17.95	-0.55%	-59.91%	-81.56%	18	18	18
BRITANNIA INDUSTRIES LTD	3727.60	0.69%	-64.54%	-80.48%	3700	3732	3760
JSW STEEL LIMITED	213.45	-0.21%	-48.90%	-74.68%	211	214	216
INDRAPRASTHA GAS LTD	1125.10	0.35%	-56.47%	-70.32%	1116	1126	1135

### SECTORAL ACTIVITY

	Value Total OI	Average of OI Change %	Average of Price Change %	Total Volume	Average of Volume Change %
Consumer Discretionary	620914070	1.3%	0.7%	182381304	25.7%
Consumer Staples	176747550	3.4%	0.8%	29595024	35.6%
Energy	278714461	7.8%	-2.9%	48890302	-6.5%
Financials	1702716733	3.2%	0.8%	173512815	33.6%
Health Care	181833700	-0.1%	0.4%	25177768	36.4%
Industrials	206974225	5.6%	-1.9%	31319472	45.9%
Information Technology	131776000	3.6%	0.0%	12683433	15.6%
Materials	1438133200	1.2%	0.7%	183128331	54.2%
Telecommunication Services	284672500	-0.4%	-0.1%	40178568	-1.9%
Utilities	1028315900	1.8%	0.5%	86418252	30.3%
<b>Grand Total</b>	<b>6050798339</b>	<b>2.5%</b>	<b>0.2%</b>	<b>813285269</b>	<b>31.0%</b>

Institutional Equity Research

## MARKET LENS

**NIFTY 9892 IN FOCUS**

July 14, 2017

Support	9840	Stock in Focus	HDFC
	9790	Positional Pick	MOTHERSON SUMI SYS.
Resistance	9960	Intraday Pick	ADANI PORTS
	10000	Intraday Pick	ESCORTS INDIA

### Pivot Table

Name	LTP	Support 2	Support 1	Pivot	Resistance 1	Resistance 2
Nifty 50	9891.7	9837.0	9864.4	9880.8	9908.2	9924.6
Nifty Bank	23888.7	23752.2	23820.4	23879.2	23947.4	24006.2
ACC LIMITED	1703.6	1673.6	1688.6	1705.0	1719.9	1736.3
ADANI PORT & SEZ LTD	376.0	369.7	372.8	375.4	378.5	381.0
AMBUJA CEMENTS LTD	263.2	258.9	261.0	262.5	264.6	266.1
ASIAN PAINTS LIMITED	1125.5	1107.3	1116.4	1130.3	1139.4	1153.3
AUROBINDO PHARMA LTD	705.2	684.0	694.6	701.8	712.4	719.6
AXIS BANK LIMITED	511.9	503.4	507.7	512.3	516.5	521.1
BAJAJ AUTO LIMITED	2789.8	2766.0	2777.9	2792.3	2804.2	2818.6
BANK OF BARODA	163.4	160.0	161.7	163.7	165.4	167.5
BHARTI AIRTEL LIMITED	403.2	396.1	399.6	402.3	405.8	408.5
BOSCH LIMITED	24253.1	23927.0	24090.0	24285.4	24448.4	24643.8
BHARAT PETROLEUM CORP LT	458.6	448.2	453.4	459.6	464.7	470.9
CIPLA LTD	543.7	536.7	540.2	542.3	545.8	547.9
COAL INDIA LTD	253.7	249.8	251.7	253.8	255.7	257.7
DR. REDDY'S LABORATORIES	2694.0	2662.2	2678.1	2698.9	2714.8	2735.7
EICHER MOTORS LTD	28056.0	27763.4	27909.7	28154.8	28301.1	28546.3
GAIL (INDIA) LTD	372.1	365.4	368.7	371.1	374.5	376.9
HCL TECHNOLOGIES LTD	858.6	850.9	854.8	859.3	863.2	867.7
HDFC LTD	1656.9	1629.2	1643.1	1654.0	1667.9	1678.8
HDFC BANK LTD	1683.6	1671.9	1677.7	1685.5	1691.4	1699.2
HERO MOTOCORP LIMITED	3751.0	3713.1	3732.0	3750.0	3768.9	3786.9
HINDALCO INDUSTRIES LTD	204.7	194.8	199.7	202.7	207.6	210.6
HINDUSTAN UNILEVER LTD.	1134.7	1126.3	1130.5	1135.2	1139.4	1144.1
INDIABULLS HSG FIN LTD	1129.2	1103.6	1116.4	1125.8	1138.6	1148.0
ICICI BANK LTD.	297.9	293.0	295.5	297.5	299.9	301.9
INDUSIND BANK LIMITED	1579.9	1551.7	1565.8	1575.4	1589.5	1599.1
BHARTI INFRAELECT LTD.	410.6	398.6	404.6	413.3	419.3	427.9
INFOSYS LIMITED	977.1	955.5	966.3	974.9	985.6	994.2
INDIAN OIL CORP LTD	381.0	366.5	373.7	384.9	392.1	403.3
ITC LTD	338.8	327.9	333.3	336.4	341.8	344.9
KOTAK MAHINDRA BANK LTD	962.1	951.2	956.7	962.2	967.7	973.2
LARSEN & TOUBRO LTD.	1175.1	1150.0	1162.6	1172.5	1185.1	1195.0
LUPIN LIMITED	1142.1	1130.7	1136.4	1144.2	1149.9	1157.7
MAHINDRA & MAHINDRA LTD	1370.4	1358.9	1364.6	1371.8	1377.6	1384.8
MARUTI SUZUKI INDIA LTD.	7567.6	7426.4	7497.0	7535.7	7606.3	7645.1
NTPC LTD	163.9	161.8	162.9	164.5	165.6	167.2
OIL AND NATURAL GAS CORP.	158.9	155.0	157.0	160.5	162.5	166.0
POWER GRID CORP. LTD.	215.1	213.0	214.0	215.5	216.6	218.1
RELIANCE INDUSTRIES LTD	1522.1	1498.9	1510.5	1517.8	1529.4	1536.6
STATE BANK OF INDIA	288.8	285.0	286.9	288.4	290.3	291.9
SUN PHARMACEUTICAL IND L	569.3	555.4	562.4	567.0	573.9	578.5
TATA MOTORS LIMITED	459.1	450.8	454.9	459.7	463.9	468.7
TATA MOTORS DVR 'A' ORD	276.5	272.8	274.7	276.4	278.3	280.0
TATA POWER CO LTD	83.3	82.4	82.8	83.4	83.8	84.4
TATA STEEL LIMITED	564.0	557.6	560.8	563.4	566.6	569.2
TATA CONSULTANCY SERV LT	2446.4	2402.9	2424.7	2448.3	2470.1	2493.7
TECH MAHINDRA LIMITED	389.3	385.5	387.4	389.2	391.1	392.9
ULTRATECH CEMENT LIMITED	4198.7	4161.8	4180.3	4204.1	4222.6	4246.4
VEDANTA LIMITED	263.1	254.1	258.6	261.2	265.7	268.3
WIPRO LTD	264.1	259.4	261.7	263.8	266.1	268.2
YES BANK LIMITED	1582.0	1492.7	1537.3	1562.7	1607.3	1632.7
ZEE ENTERTAINMENT ENT LTD	517.0	505.9	511.5	515.3	520.9	524.7

Institutional Equity Research

July 14, 2017

## MARKET LENS

NIFTY	9892	IN FOCUS
Support	9840	Stock in Focus
	9790	HDFC
		Positional Pick
Resistance	9960	MOTHERSON SUMI SYS.
		Intraday Pick
	10000	ADANI PORTS
		Intraday Pick
		ESCORTS INDIA

## Simple Moving Average

Scrip Name	Close Rate	20-SMA	50-SMA	100-SMA	200-SMA	HIGH_52WEEK	LOW_52WEEK
NIFTY	9891.7	9640.7	9564.1	9327.6	8869.7	9897.3	7893.8
BANK NIFTY	23888.7	23490.6	23242.6	22253.1	20647.7	23964.8	17606.9
SENSEX 50	10254.5	9999.7	9907.3	9649.4	9160.2	10254.5	8144.6
ACC	1703.6	1623.5	1637.8	1550.6	1488.3	1756.7	1256.6
ADANI PORTS	376.0	369.6	357.9	338.9	310.4	382.7	214.6
AMBUJACEM	263.2	247.7	246.1	241.3	233.4	281.7	191.0
ASIANPAINT	1125.5	1131.7	1138.4	1095.6	1047.8	1225.2	849.6
AUROPHARMA	705.2	676.6	623.1	642.1	690.5	895.0	503.1
AXISBANK	511.9	508.6	508.7	506.6	494.8	638.3	424.4
BAJAJ-AUTO	2789.8	2788.5	2849.6	2845.6	2792.6	3120.0	2510.0
BANKBARODA	163.4	162.7	174.0	172.3	166.7	202.5	135.3
BHARTIARTL	403.2	379.1	371.7	361.9	340.3	410.2	283.1
BHEL	142.5	136.9	148.0	157.4	145.5	182.8	116.1
BOSCHLTD	24253.1	23915.4	23742.8	23109.0	22219.6	25670.9	17671.6
BPCL	458.6	436.8	463.4	455.4	440.2	512.8	355.5
CIPLA	543.7	543.6	542.6	563.6	569.3	621.3	480.2
COALINDIA	253.7	250.2	261.9	279.9	295.7	350.0	242.6
DRREDDY	2694.0	2673.8	2619.8	2669.0	2888.6	3689.9	2380.4
EICHERMOT	28056.0	27806.5	28172.0	26574.0	24874.0	30051.0	19450.0
GAIL	372.1	366.0	387.9	388.1	357.4	433.7	268.3
GRASIM	1287.4	1213.7	1169.8	1118.5	1011.1	1375.0	781.9
HCLTECH	858.6	845.7	851.3	847.0	828.2	909.6	710.3
HDFC	1656.9	1638.5	1599.9	1529.7	1420.2	1682.2	1183.2
HDFCBANK	1683.6	1672.3	1627.6	1532.0	1385.9	1748.0	1158.0
HEROMOTOCO	3751.0	3734.5	3669.4	3461.9	3334.0	3880.6	2849.5
HINDALCO	204.7	196.0	195.4	193.2	180.5	210.4	130.4
HINDUNILVR	1134.7	1099.6	1062.3	981.3	910.9	1150.0	782.0
ICICIBANK	297.9	291.0	286.2	269.5	255.5	305.2	215.1
IDEA	87.8	82.7	82.9	89.7	84.4	123.5	65.8
INDUSINDBK	1579.9	1513.0	1478.9	1432.4	1303.7	1585.0	1036.7
INFRA TEL	410.6	389.9	381.8	354.0	353.5	422.4	281.8
INFY	977.1	947.0	955.4	973.1	977.6	1196.1	901.0
ITC	338.8	321.5	306.4	290.4	267.2	367.7	222.0
KOTAKBANK	962.1	968.9	958.8	907.4	833.6	1004.7	692.5
LT	1175.1	1147.4	1160.2	1109.7	1027.4	1222.6	863.4
LUPIN	1142.1	1098.7	1166.3	1300.1	1392.3	1750.0	1036.2
M&M	1370.4	1375.3	1374.4	1337.1	1298.7	1509.0	1141.4
MARUTI	7567.6	7331.6	7125.2	6624.6	6073.2	7574.5	4326.0
NTPC	163.9	159.7	159.4	161.5	161.0	178.3	142.9
ONGC	158.9	161.7	171.5	180.2	185.6	211.8	144.7
POWERGRID	215.1	209.5	207.7	203.1	194.8	217.0	161.8
RELIANCE	1522.1	1434.6	1374.3	1338.1	1191.7	1550.0	930.0
SBIN	288.8	282.7	288.8	284.3	271.4	315.3	222.1
SUNPHARMA	569.3	546.2	568.3	622.8	652.6	855.0	492.7
TATAMOTORS	459.1	445.8	450.3	455.9	480.2	598.4	417.3
TATAPOWER	83.3	81.3	81.4	83.2	80.0	91.2	67.0
TATASTEEL	564.0	534.7	502.0	489.6	454.5	566.0	348.7
TCS	2446.4	2390.6	2449.0	2436.7	2369.3	2744.8	2051.9
TECHM	389.3	385.4	401.8	433.2	446.0	517.5	356.7
ULTRACEMCO	4198.7	4056.9	4171.4	4069.4	3844.2	4533.1	3050.0
WIPRO	264.1	258.9	261.1	254.7	244.2	287.5	204.1
YESBANK	1582.0	1473.7	1483.4	1504.9	1379.0	1651.9	1090.6
ZEEL	517.0	502.0	511.4	517.7	502.5	589.9	427.7

Institutional Equity Research

MARKET LENS

NIFTY 9892 IN FOCUS

July 14, 2017

Support	9840	Stock in Focus	HDFC
	9790	Positional Pick	MOTHERSON SUMI SYS.
Resistance	9960	Intraday Pick	ADANI PORTS
	10000	Intraday Pick	ESCORTS INDIA

Bulk Deals Snapshot

Deal Date	Scrip Code	Company	Client Name	Deal Type*	Quantity	Price **
13/07/2017	524640	ARCHITORG	AMIN SUCHIT KANDARP	B	160,000	50.1
13/07/2017	524640	ARCHITORG	RAKESH RAMESHCHANDRA PATEL	S	160,000	50.1
13/07/2017	524640	ARCHITORG	AMBITIOUS PLASTOMAC COMPANY LIMITED	S	50,900	52.0
13/07/2017	524640	ARCHITORG	BAKSHU SECURITIES AND BROKER PRIVATE LIMITED	S	3,000	51.3
13/07/2017	524640	ARCHITORG	BAKSHU SECURITIES AND BROKER PRIVATE LIMITED	B	36,621	51.6
13/07/2017	538566	BESTSTEEL	ESSCEE TRADING VENTURE	S	100,000	96.3
13/07/2017	534691	COMCL	SMITA JAISWAL	B	100,000	39.0
13/07/2017	534691	COMCL	RATHOD MANOJ CHHAGANLAL HUF	S	227,834	38.9
13/07/2017	534691	COMCL	RATHOD MANOJ CHHAGANLAL HUF	B	227,834	38.9
13/07/2017	522295	CONTROLPR	SILVER PLASTOCHEM PVT LTD	B	124,500	345.0
13/07/2017	522295	CONTROLPR	NYANA SABHARWAL	S	125,000	345.0
13/07/2017	509567	GOACARBON	ILLUMINATI TRADING PRIVATE LIMITED	S	65,000	376.5
13/07/2017	509567	GOACARBON	ILLUMINATI TRADING PRIVATE LIMITED	B	65,000	376.1
13/07/2017	509567	GOACARBON	QE SECURITIES	S	77,709	376.4
13/07/2017	509567	GOACARBON	QE SECURITIES	B	70,011	377.3
13/07/2017	530145	KISAN	K R DEVELOPERS LLP	B	225,000	104.0
13/07/2017	523792	MAZDALTD	G R D SECURITIES LIMITED	S	21,717	463.0
13/07/2017	523792	MAZDALTD	G R D SECURITIES LIMITED	B	21,717	464.0
13/07/2017	540519	MEERA	RETSINA MARKETING PRIVATE LIMITED	S	69,000	55.8
13/07/2017	540519	MEERA	UTSAV PRAMODKUMAR SHRIVASTAV	B	42,000	55.0
13/07/2017	538707	RCCL	SREE GOPAL BAJORIA	S	19,101	55.7
13/07/2017	533608	RDBRL	SHEETAL DUGAR	S	90,236	61.6
13/07/2017	533608	RDBRL	SOMANI ESTATES PRIVATE LIMITED	B	100,000	61.6
13/07/2017	532805	REDINGTON	LOCAL GOVERNMENT SUPERANNUATION SCHEME	S	7,534,460	141.4
13/07/2017	532805	REDINGTON	MORGAN STANLEY INVESTMENT FUNDS INDIAN EQUITY FUND	B	7,534,460	141.4
13/07/2017	540590	RIDDHICORP	SEFALI SUNIL PANDYA	S	29,000	134.5
13/07/2017	540590	RIDDHICORP	VIPULKUMAR CHANDULAL THAKKAR	B	32,000	134.2
13/07/2017	539526	SCTL	JHAVERI TRADING AND INVESTMENT PVT LTD	B	70,000	45.0
13/07/2017	539526	SCTL	RIYA ALPESH SHAH	S	38,000	45.0
13/07/2017	539526	SCTL	ALPESH BABULAL SHAH	S	32,000	45.0
13/07/2017	519566	SIMRAN	VARSHA CHUGH	S	21,000	82.5
13/07/2017	538918	VANICOM	GHANSHYAM C JOSHI	B	37,000	42.9
13/07/2017	538918	VANICOM	AVINASH C KAPUR	S	37,385	42.8
13/07/2017	538918	VANICOM	AVINASH C KAPUR	B	37,385	42.9
13/07/2017	538918	VANICOM	VIJAY MADHUSUDANBHAI KOSHTI	S	26,250	42.7
13/07/2017	538918	VANICOM	VIJAY MADHUSUDANBHAI KOSHTI	B	26,250	42.6
13/07/2017	538918	VANICOM	DILIP SHETH	S	36,250	42.8
13/07/2017	538918	VANICOM	DILIP SHETH	B	36,250	42.8
13/07/2017	538918	VANICOM	PRASHANT SHANTILAL KATARIA	S	36,250	42.8
13/07/2017	538918	VANICOM	PRASHANT SHANTILAL KATARIA	B	36,250	42.8
13/07/2017	538918	VANICOM	LOKESH RAMGOPAL SONI	S	26,250	42.6
13/07/2017	538918	VANICOM	LOKESH RAMGOPAL SONI	B	26,250	42.6
13/07/2017	503657	VEERENRGY	KALPESH DINESHBHAI PATEL	S	69,810	24.0
13/07/2017	503657	VEERENRGY	KALPESH DINESHBHAI PATEL	B	69,810	24.0
13/07/2017	503349	VICTMILL	TIRATH PRADYUMAN PARIKH	S	625	4741.8
13/07/2017	540550	YUG	SHERWOOD SECURITIES PVT LTD	S	24,000	36.1
13/07/2017	540550	YUG	SHERWOOD SECURITIES PVT LTD	B	8,000	35.1

\*B - Buy, S - Sell, \*\* = Weighted Average Trade Price / Trade Price



Institutional Equity Research

MARKET LENS

NIFTY 9892 IN FOCUS

July 14, 2017

Support	9840	Stock in Focus	HDFC
	9790	Positional Pick	MOTHERSON SUMI SYS.
Resistance	9960	Intraday Pick	ADANI PORTS
	10000	Intraday Pick	ESCORTS INDIA

Monthly Economic Calendar

Date Time	Country	Event	Period	Prior
14-Jul-17	JN	Industrial Production MoM	May F	--
14-Jul-17	US	CPI MoM	Jun	--
14-Jul-17	IN	Wholesale Prices YoY	Jun	--
18-Jul-17	UK	CPI YoY	Jun	--
18-Jul-17	EC	CPI YoY	Jun F	--
20-Jul-17	AU	Employment Change	Jun	--
20-Jul-17	AU	Unemployment Rate	Jun	--
20-Jul-17	EC	ECB Main Refinancing Rate	20-Jul	--
20-Jul-17	US	Initial Jobless Claims	15-Jul	--
25-Jul-17	IN	Eight Infrastructure Industries	Jun	--
26-Jul-17	UK	GDP QoQ	2Q A	--
26-Jul-17	UK	GDP YoY	2Q A	--
26-Jul-17	US	FOMC Rate Decision (Upper Bound)	26-Jul	1.3%
27-Jul-17	US	Initial Jobless Claims	22-Jul	--
28-Jul-17	JN	Jobless Rate	Jun	--
28-Jul-17	US	GDP Annualized QoQ	2Q A	--
31-Jul-17	JN	Industrial Production MoM	Jun P	--
31-Jul-17	IN	Fiscal Deficit INR Crore	Jun	--

Institutional Equity Research

## MARKET LENS

**NIFTY 9892 IN FOCUS**

July 14, 2017

Support	9840	Stock in Focus	HDFC
	9790	Positional Pick	MOTHERSON SUMI SYS.
Resistance	9960	Intraday Pick	ADANI PORTS
	10000	Intraday Pick	ESCORTS INDIA

## Corporate Actions

### Ex-Dividend

Company Name	Ex-Date	Purpose
Birla Cable Limited	14-Jul-17	Annual General Meeting
GIC Housing Finance Limited	14-Jul-17	Annual General Meeting/Dividend - Rs 5/- Per Share
GlaxoSmithKline Pharmaceuticals Limited	14-Jul-17	Dividend - Rs 30/- Per Share
Ingersoll Rand (India) Limited	14-Jul-17	Annual General Meeting/Dividend - Rs 3 Per Share
Housing Development Finance Corporation Limited	14-Jul-17	Dividend - Rs 15/- Per Share
Mahindra & Mahindra Financial Services Limited	14-Jul-17	Annual General Meeting/Dividend - Rs 2.40 Per Share
Kesar Enterprises Limited	14-Jul-17	Annual General Meeting
Universal Cables Limited	14-Jul-17	Annual General Meeting
Vindhya Telelinks Limited	14-Jul-17	Dividend - Rs 7 Per Share
VIP Industries Limited	14-Jul-17	Annual General Meeting/Dividend - Rs 1.60/- Per Share
Dr. Reddy's Laboratories Limited	17-Jul-17	Annual General Meeting/Dividend - Rs 20/- Per Share
Astec LifeSciences Limited	17-Jul-17	Annual General Meeting/Dividend - Rs 1.50 Per Share
Agro Tech Foods Limited	17-Jul-17	Annual General Meeting/Dividend - Rs 2/- Per Share
Shankara Building Products Limited	17-Jul-17	Annual General Meeting/Dividend - Rs 2.75 Per Share
Everest Industries Limited	17-Jul-17	Annual General Meeting/Dividend - Re 1/- Per Share
PVR Limited	17-Jul-17	Dividend - Rs 2/- Per Share
Oricon Enterprises Limited	17-Jul-17	Annual General Meeting/Dividend - Re 0.46 Per Share
Grindwell Norton Limited	17-Jul-17	Annual General Meeting/Dividend - Rs 4/- Per Share
Blue Dart Express Limited	18-Jul-17	Annual General Meeting/Dividend-Rs 15/- Per Share
IndusInd Bank Limited	18-Jul-17	Annual General Meeting/Dividend - Rs 6/- Per Share
JK Cement Limited	18-Jul-17	Annual General Meeting/Dividend - Rs 8/- Per Share
Seshasayee Paper and Boards Limited	18-Jul-17	Dividend - Rs 10/- Per Share
Thangamayil Jewellery Limited	18-Jul-17	Annual General Meeting/Dividend - Rs 2/- Per Share
Tide Water Oil Company (India) Limited	18-Jul-17	Annual General Meeting/Dividend - Rs 100/- Per Share
Vinati Organics Limited	18-Jul-17	Annual General Meeting/Dividend-Re 0.50 Per Share
SKF India Limited	18-Jul-17	Annual General Meeting/Dividend-Rs 10 Per Share
Alembic Limited	19-Jul-17	Annual General Meeting/Dividend - Re 0.20 Per Share

### Result Calendar

Company Name	Board Meeting Date	Purpose
Bhansali Engineering Polymers Limited	14-Jul-17	Results/Others
Infomedia Press Limited	14-Jul-17	Results
Infosys Limited	14-Jul-17	Results
DCB Bank Limited	15-Jul-17	Results
Gruh Finance Limited	15-Jul-17	Results
The Karnataka Bank Limited	15-Jul-17	Results
ACC Limited	17-Jul-17	Results/Dividend
ANG Industries Limited	17-Jul-17	Results/Others
Capri Global Capital Limited	17-Jul-17	Results
Hindustan Media Ventures Limited	17-Jul-17	Results

Institutional Equity Research

MARKET LENS

NIFTY 9892 IN FOCUS

July 14, 2017

Support	9840	Stock in Focus	HDFC
	9790	Positional Pick	MOTHERSON SUMI SYS.
Resistance	9960	Intraday Pick	ADANI PORTS
	10000	Intraday Pick	ESCORTS INDIA

Result Calendar

Company Name	Board Meeting Date	Purpose
Indian Metals & Ferro Alloys Limited	17-Jul-17	Results
Jubilant Foodworks Limited	17-Jul-17	Results
Jubilant Life Sciences Limited	17-Jul-17	Results
Linde India Limited	17-Jul-17	Results
Prakash Industries Limited	17-Jul-17	Results
SIL Investments Limited	17-Jul-17	Results
CRISIL Limited	18-Jul-17	Results/Dividend
HIL Limited	18-Jul-17	Results
Hindustan Unilever Limited	18-Jul-17	Results
HT Media Limited	18-Jul-17	Results
Jubilant Life Sciences Limited	18-Jul-17	Results
Maharashtra Scooters Limited	18-Jul-17	Results
Sasken Technologies Limited	18-Jul-17	Results
UltraTech Cement Limited	18-Jul-17	Results
Bajaj Finance Limited	19-Jul-17	Results
Bajaj Finserv Limited	19-Jul-17	Results
GNA Axles Limited	19-Jul-17	Results
Havells India Limited	19-Jul-17	Results
KPIT Technologies Limited	19-Jul-17	Results
Mastek Limited	19-Jul-17	Results
MindTree Limited	19-Jul-17	Results
Sutlej Textiles and Industries Limited	19-Jul-17	Results
ABB India Limited	20-Jul-17	Results
Bajaj Auto Limited	20-Jul-17	Results
Bajaj Holdings & Investment Limited	20-Jul-17	Results
Kansai Nerolac Paints Limited	20-Jul-17	Results
Kotak Mahindra Bank Limited	20-Jul-17	Results
Mahindra CIE Automotive Limited	20-Jul-17	Results
NIIT Technologies Limited	20-Jul-17	Results
Nucleus Software Exports Limited	20-Jul-17	Results
R. S. Software (India) Limited	20-Jul-17	Results/Others
RBL Bank Limited	20-Jul-17	Results
Wipro Limited	20-Jul-17	Results
Ashok Leyland Limited	21-Jul-17	Results
Atul Limited	21-Jul-17	Results
Can Fin Homes Limited	21-Jul-17	Results
Mafatlal Finance Limited	21-Jul-17	Results/Others
Persistent Systems Limited	21-Jul-17	Results
Tata Sponge Iron Limited	21-Jul-17	Results
The Tinsplate Company of India Limited	21-Jul-17	Results
3i Infotech Limited	22-Jul-17	Results
Bharti Infratel Limited	24-Jul-17	Results
Excel Crop Care Limited	24-Jul-17	Results

Institutional Equity Research

**MARKET LENS**

NIFTY	9892	IN FOCUS	
Support	9840	Stock in Focus	HDFC
	9790	Positional Pick	MOTHERSON SUMI SYS.
Resistance	9960	Intraday Pick	ADANI PORTS
	10000	Intraday Pick	ESCORTS INDIA

July 14, 2017

Reliance Securities Limited (RSL), the broking arm of Reliance Capital is one of the India's leading retail broking houses. Reliance Capital is amongst India's leading and most valuable financial services companies in the private sector. Reliance Capital has interests in asset management and mutual funds, life and general insurance, commercial finance, equities and commodities broking, wealth management services, distribution of financial products, private equity, asset reconstruction, proprietary investments and other activities in financial services. The list of associates of RSL is available on the website [www.reliancecapital.co.in](http://www.reliancecapital.co.in). RSL is registered as a Research Analyst under SEBI (Research Analyst) Regulations, 2014

**General Disclaimers:** This Research Report (hereinafter called 'Report') is prepared and distributed by RSL for information purposes only. The recommendations, if any, made herein are expression of views and/or opinions and should not be deemed or construed to be neither advice for the purpose of purchase or sale of any security, derivatives or any other security through RSL nor any solicitation or offering of any investment /trading opportunity on behalf of the issuer(s) of the respective security(ies) referred to herein. These information / opinions / views are not meant to serve as a professional investment guide for the readers. No action is solicited based upon the information provided herein. Recipients of this Report should rely on information/data arising out of their own investigations. Readers are advised to seek independent professional advice and arrive at an informed trading/investment decision before executing any trades or making any investments. This Report has been prepared on the basis of publicly available information, internally developed data and other sources believed by RSL to be reliable. RSL or its directors, employees, affiliates or representatives do not assume any responsibility for, or warrant the accuracy, completeness, adequacy and reliability of such information / opinions / views. While due care has been taken to ensure that the disclosures and opinions given are fair and reasonable, none of the directors, employees, affiliates or representatives of RSL shall be liable for any direct, indirect, special, incidental, consequential, punitive or exemplary damages, including lost profits arising in any way whatsoever from the information / opinions / views contained in this Report.

**Risks:** Trading and investment in securities are subject to market risks. There are no assurances or guarantees that the objectives of any of trading / investment in securities will be achieved. The trades/ investments referred to herein may not be suitable to all categories of traders/investors. The names of securities mentioned herein do not in any manner indicate their prospects or returns. The value of securities referred to herein may be adversely affected by the performance or otherwise of the respective issuer companies, changes in the market conditions, micro and macro factors and forces affecting capital markets like interest rate risk, credit risk, liquidity risk and reinvestment risk. Derivative products may also be affected by various risks including but not limited to counter party risk, market risk, valuation risk, liquidity risk and other risks. Besides the price of the underlying asset, volatility, tenor and interest rates may affect the pricing of derivatives.

**Disclaimers in respect of jurisdiction:** The possession, circulation and/or distribution of this Report may be restricted or regulated in certain jurisdictions by appropriate laws. No action has been or will be taken by RSL in any jurisdiction (other than India), where any action for such purpose(s) is required. Accordingly, this Report shall not be possessed, circulated and/or distributed in any such country or jurisdiction unless such action is in compliance with all applicable laws and regulations of such country or jurisdiction. RSL requires such recipient to inform himself about and to observe any restrictions at his own expense, without any liability to RSL. Any dispute arising out of this Report shall be subject to the exclusive jurisdiction of the Courts in India.

**Disclosure of Interest:** The research analysts who have prepared this Report hereby certify that the views /opinions expressed in this Report are their personal independent views/opinions in respect of the securities and their respective issuers. None of RSL, research analysts, or their relatives had any known direct /indirect material conflict of interest including any long/short position(s) in any specific security on which views/opinions have been made in this Report, during its preparation. RSL's Associates may have other potential/material conflict of interest with respect to any recommendation and related information and opinions at the time of publication of research report. RSL, its Associates, the research analysts, or their relatives might have financial interest in the issuer company(ies) of the said securities. RSL or its Associates may have received a compensation from the said issuer company(ies) in last 12 months for the brokerage or non brokerage services. RSL, its Associates, the research analysts or their relatives have not received any compensation or other benefits directly or indirectly from the said issuer company(ies) or any third party in last 12 months in any respect whatsoever for preparation of this report.

The research analysts has served as an officer, director or employee of the said issuer company(ies)?: No

RSL, its Associates, the research analysts or their relatives holds ownership of 1% or more, in respect of the said issuer company(ies)?: No

**Copyright:** The copyright in this Report belongs exclusively to RSL. This Report shall only be read by those persons to whom it has been delivered. No reprinting, reproduction, copying, distribution of this Report in any manner whatsoever, in whole or in part, is permitted without the prior express written consent of RSL.

RSL's activities were neither suspended nor have defaulted with any stock exchange with whom RSL is registered. Further, there does not exist any material adverse order/judgments/strictures assessed by any regulatory, government or public authority or agency or any law enforcing agency in last three years. Further, there does not exist any material enquiry of whatsoever nature instituted or pending against RSL as on the date of this Report.

**Important** These disclaimers, risks and other disclosures must be read in conjunction with the information / opinions / views of which they form part of.

RSL CIN: U65990MH2005PLC154052. SEBI registration no. ( Stock Brokers: NSE - INB / INF / INE 231234833; BSE - INB / INF / INE 011234839, Depository Participants: CDSL IN-DP-257-2016 IN-DP-NSDL-363-2013, Research Analyst: INH000002384); AMFI ARN No.29889.