

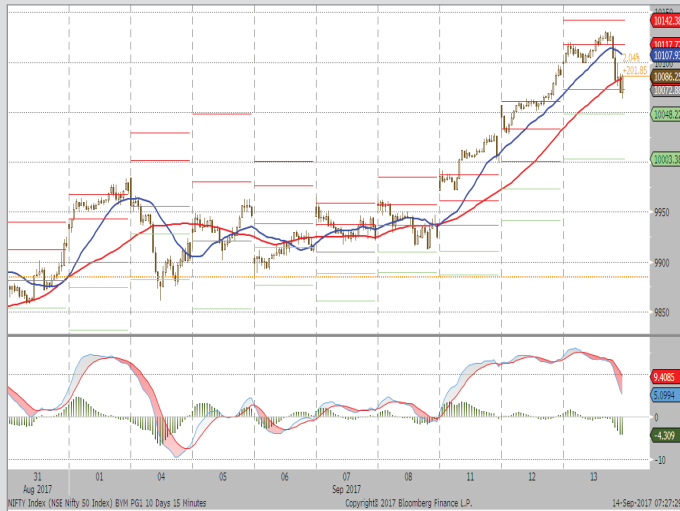
MARKET LENS

NIFTY	10079
Support	10030
	9960
Resistance	10140
	10200

IN FOCUS

Stock in Focus	<b>Tech Mahindra</b>
Positional Pick	LUPIN
Intraday Pick	INFRATEL
Intraday Pick	HINDALCO

September 14, 2017



STOCK IN FOCUS

- ▶ **Tech Mahindra's** 1QFY18 revenue rose by 0.6% QoQ, with the Enterprise business (+2.7% QoQ) clocking strong growth.
- ▶ A key positive sign was management commentary on business stability being achieved in the Communications vertical, with portfolio rationalisation more or less behind the company.
- ▶ We expect Tech Mahindra to report 10.2% USD revenue CAGR over the period FY17-FY19E.
- ▶ **We have a BUY rating on Tech Mahindra, with a target price of Rs485.**

Positional Pick

**LUPIN (LTP: 992) BUY**

For today's trade, long position can be initiated at 992-980 for target of Rs 1020 with a strict stop loss of Rs 949.

Intraday Picks

**INFRATEL (LTP: 371) BUY**

For today's trade, long position can be initiated at Rs 369 for target of Rs 381 with a strict stop loss of Rs 365. Traders are advised to avoid early morning whipsaw.

**HINDALCO (LTP: 248) SELL**

For today's trade, short position can be initiated at Rs 250 for target of Rs 243 with a strict stop loss of Rs 253. Traders are advised to avoid early morning whipsaw.

EQUITY INDICES

Indices	Absolute Change		Percentage Change		
	Last Trade	Change	1-D	1-Mth	YTD
<b>Domestic</b>					
BSE Sensex	32,186.4	27.8	0.1%	2.3%	20.9%
CNX Nifty	10,079.3	(13.8)	-0.1%	2.9%	23.1%
S&P CNX 500	8,866.9	(23.8)	-0.3%	3.8%	27.0%
SENSEX 50	10,472.9	(13.6)	-0.1%	3.0%	24.3%
<b>International</b>					
DJIA	22,158.2	39.3	0.2%	0.7%	12.1%
NASDAQ	6,460.2	5.9	0.1%	1.9%	20.0%
NIKKEI	19,915.6	49.8	0.2%	1.9%	4.2%
HANGSENG	27,863.2	(30.9)	-0.1%	2.2%	26.6%
MSCI Emerging Mkts	1,099.5	(2.8)	-0.3%	4.3%	27.5%

ADRs / GDRs

	Last Trade	Change	1-D	1-Mth	YTD
Dr. Reddy's Lab (ADR)	34.9	0.7	2.1%	13.6%	-22.9%
Tata Motors (ADR)	30.5	(0.1)	-0.4%	2.5%	-11.4%
Infosys (ADR)	14.5	(0.0)	-0.1%	-6.1%	-2.0%
ICICI Bank (ADR)	9.1	0.0	0.1%	2.0%	34.1%
HDFC Bank (ADR)	99.4	0.1	0.1%	4.4%	63.8%
Axis Bank (GDR)	38.8	0.4	0.9%	2.0%	18.1%
Reliance Ind (GDR)	52.5	1.5	2.9%	7.6%	66.4%

COMMODITY MARKET

Key Commodities	Last Trade	Change	1-D	1-Mth	YTD
Brent Crude (\$/bl)	55.1	(0.1)	-0.2%	8.6%	-3.1%
Silver (\$/Oz)	17.7	(0.1)	-0.3%	3.8%	11.3%
Gold (\$/Oz)	1,320.6	(1.8)	-0.1%	3.0%	15.1%
Copper LME (\$/MT)	6,511.3	(116.0)	-1.8%	2.0%	17.9%
Aluminium LME (\$/MT)	2,078.3	(25.8)	-1.2%	2.0%	22.0%
Baltic Dry	1,344.0	(11.0)	-0.8%	16.4%	39.9%

CURRENCY RATES

	Last Trade	Change	1-D	1-Mth	YTD
USD/INR	64.0	64.0	-0.1%	-0.2%	-5.8%
EUR/INR	76.7	76.4	0.3%	1.4%	7.0%

RATES

	Last Trade	Change	1-D	1-Mth	YTD
T-Bill - 91 D	6.1	6.1	-0.1%	-0.6%	-1.9%
10 Year G-sec Yield	6.6	6.6	0.5%	1.2%	1.1%

INVESTMENT ACTIVITY (RS. CR)

Category	BUY	SELL	NET	Prev
FI	3,695.5	4,522.3	(826.8)	(1,231)
DII	3,379.4	2,653.5	725.9	1,313

EXCHANGE TURNOVER

Exchange	Rs Crore
BSE Equity	3,571.9
BSE Derivatives	0.14
NSE Equity	29,181.6
NSE Derivatives	6,58,605.1

Institutional Equity Research

MARKET LENS

NIFTY	10079	IN FOCUS
Support	10030	Stock in Focus <b>Tech Mahindra</b>
	9960	Positional Pick LUPIN
Resistance	10140	Intraday Pick INFRATEL
	10200	Intraday Pick HINDALCO

September 14, 2017

Technical Research

MARKET SYNOPSIS

- ▶ Yesterday, NSE-NIFTY managed to continue prior up-move post a stable opening, where index rose to 10,131 level during the day, but later due to higher level profit booking surrendered intraday gains and slipped to 10,063 mark.
- ▶ Finally, NIFTY finished trade at 10,079 level, with cut of 14 points.
- ▶ NSE Cash segment reported turnover of Rs29,182 crore as compared to Rs28,295 crore earlier.
- ▶ Overall market breadth remained negative, where 599 stocks advanced against 1079 declined stocks.



- ▶ Mixed trend was observed across all the sectoral indices during the day, where Pharma index emerged as a top gainer with the increase of 1.6%. On the hand, Realty index reported the highest loss (1.3%).

NSE-NIFTY OUTLOOK

- ▶ NSE-NIFTY failed to record new life-time-high amidst profit booking in the index heavyweights and mixed global cues. As mentioned earlier, our view will remain positive for the index, where it will continue to face some hurdle around the life-time-high (10,140 level). However, major hurdle is placed at around 10,500 mark for the index (coinciding with the upper band of the rising channel). In case of any decline, its short-term and medium-term moving averages (20 and 50-DEMA) will work as key reversal point for the index, which are now placed around 9,930 and 9,850 levels respectively.
- ▶ As for the day, support is placed at around 10,030 and then at 9,960 levels, while resistance is observed at 10,140 and then around at 10,200 levels.

Institutional Equity Research

MARKET LENS

NIFTY 10079 IN FOCUS

September 14, 2017

Support	10030	Stock in Focus	<b>Tech Mahindra</b>
	9960	Positional Pick	LUPIN
Resistance	10140	Intraday Pick	INFRATEL
	10200	Intraday Pick	HINDALCO

Technical Research

Positional Pick: LUPIN

CMP: 992 | RECO: BUY | AT: 992-980 | TARGET: 1020 | STOP LOSS: 949



- ▶ The stock has made a double bottom at 920 levels with positive price momentum in the past few days and closed at 8 day high.
- ▶ The key technical indicators RSI has also reversed turning upwards and as the stock is in poised for a breakout from current levels.
- ▶ The stock has completed its 61.8% retracement levels from the range of (363-2129) at sub 960 levels and we believe it would continue to hold as strong support levels.
- ▶ Thus, for today's trade, long position can be initiated at 992-980 for target of Rs 1020 with a stop loss of Rs 949.

Institutional Equity Research

## MARKET LENS

NIFTY 10079 IN FOCUS

September 14, 2017

Support	10030	Stock in Focus	Tech Mahindra
	9960	Positional Pick	LUPIN
Resistance	10140	Intraday Pick	INFRATEL
	10200	Intraday Pick	HINDALCO

### Derivatives Snapshot

- ▶ Nifty opened higher but failed to cross the previous high and minor profit booking was observed in the last one hour of trade. Nifty closed down by 14 points at 10,079 levels. Among the nifty stocks 19 stocks advanced and 32 declined during the day.
- ▶ Sectorally, it was a mixed bag with FMCG, Metals, and Realty witnessed profit booking to the tune of 1% average while Pharma, and PSU Banks gained by 1.6% and 0.3% respectively.
- ▶ Broader market indices remained flat with NIFTY 100,200 and 500 to close down by 0.2% average while midcap indices and small cap indices declined by 0.6% and 0.9% respectively.
- ▶ Nifty September futures ends with 12 points premium at 10,092 mark, while on other hand, Bank Nifty September futures ended with the discount of 10 points at 24,822 mark.
- ▶ As discussed Nifty resisted near the previous all time high and ended flat for the day. We continue to remain positive and expect some consolidation in broader range of 10,000-10,200 levels for next few days. Nifty 10,100 CE and 10,200 CE has seen addition of 3 lakhs shares average while on the downside 9,900 PE has the highest put OI average of 60 lakhs shares.

**Sectoral Activity:** Amongst sectoral index, Pharma and PSU Banks remained in focus with positive momentum.

**Stock Activity:** Glenmark and Canara Bank observed build up in long position.

#### TOP 5 PRICE GAINERS

Stock Name	LTP	% Price Chg	% Vol Chg	%OI Chg	Support	Pivot	Resistance
RELIANCE DEF AND ENGI LTD	59.65	5.58%	755.83%	7.82%	57	59	62
IDEA CELLULAR LIMITED	82.60	4.96%	104.34%	-0.02%	79	82	85
TATA POWER CO LTD	84.80	4.69%	427.94%	18.51%	83	85	87
WOCKHARDT LIMITED	643.95	4.21%	805.43%	37.06%	613	644	675
RURAL ELEC CORP. LTD.	171.35	4.13%	235.18%	-1.96%	166	170	175

#### TOP 5 PRICE LOSERS

Stock Name	LTP	% Price Chg	% Vol Chg	%OI Chg	Support	Pivot	Resistance
JUBILANT FOODWORKS LTD	1323.35	-7.12%	50.08%	46.40%	1279	1350	1395
BHARAT PETROLEUM CORP LT	500.20	-6.30%	126.96%	26.77%	479	510	531
HINDUSTAN PETROLEUM CORP	457.50	-5.12%	162.58%	11.48%	439	462	481
INDIAN OIL CORP LTD	415.95	-4.36%	306.51%	10.15%	402	422	436
PTC INDIA LIMITED	120.75	-4.20%	-48.77%	-4.51%	119	122	123

#### TOP 5 OI GAINERS

Stock Name	LTP	% Price Chg	% Vol Chg	%OI Chg	Support	Pivot	Resistance
JSW ENERGY LIMITED	77.05	-0.26%	68.24%	48.62%	75	78	81
JUBILANT FOODWORKS LTD	1323.35	-7.12%	50.08%	46.40%	1279	1350	1395
WOCKHARDT LIMITED	643.95	4.21%	805.43%	37.06%	613	644	675
HEXAWARE TECHNOLOGIES LTD	275.55	0.73%	82.08%	29.88%	273	277	280
DIVI'S LABORATORIES LTD	828.25	2.88%	43.31%	28.51%	792	829	865

#### TOP 5 OI LOSERS

Stock Name	LTP	% Price Chg	% Vol Chg	%OI Chg	Support	Pivot	Resistance
INDRAPRASTHA GAS LTD	1400.40	-1.92%	-26.51%	-9.76%	1373	1406	1433
GAIL (INDIA) LTD	408.00	-0.39%	-42.07%	-8.39%	400	408	415
TATA ELXSI LIMITED	1815.30	0.12%	18.08%	-7.03%	1804	1822	1834
BATA INDIA LTD	710.55	-1.04%	-25.66%	-6.58%	702	714	723
PUNJAB NATIONAL BANK	143.00	1.06%	-11.39%	-5.83%	141	143	145

Institutional Equity Research

MARKET LENS

NIFTY 10079 IN FOCUS

September 14, 2017

Support	10030	Stock in Focus	Tech Mahindra
	9960	Positional Pick	LUPIN
Resistance	10140	Intraday Pick	INFRATEL
	10200	Intraday Pick	HINDALCO

Derivatives Snapshot

TOP 5 "RISE IN % DEL CHG"

Stock Name	LTP	% Price Chg	% Vol Chg	%Del Chg	Support	Pivot	Resistance
AJANTA PHARMA LIMITED	1201.30	0.73%	653.00%	598.81%	1173	1210	1239
RELIANCE DEF AND ENGI LTD	59.65	5.58%	755.83%	476.26%	57	59	62
HEXAWARE TECHNOLOGIES LTD	275.55	0.73%	82.08%	474.73%	273	277	280
INDIAN OIL CORP LTD	415.95	-4.36%	306.51%	409.96%	402	422	436
TATA POWER CO LTD	84.80	4.69%	427.94%	373.76%	83	85	87

TOP 5 "DECLINE IN % DEL CHG"

Stock Name	LTP	% Price Chg	% Vol Chg	%Del Chg	Support	Pivot	Resistance
SHREE CEMENTS LTD	18869.00	-0.38%	-93.30%	-97.21%	18659	18919	19129
NCC LIMITED	88.80	-1.50%	-78.57%	-83.14%	88	89	91
TATA STEEL LIMITED	679.65	-0.48%	-77.18%	-80.56%	676	680	684
STRIDES SHASUN LIMITED	957.60	0.87%	-60.01%	-73.85%	945	959	972
SRF LTD	1565.00	-1.87%	-60.76%	-72.69%	1552	1573	1587

SECTORAL ACTIVITY

	Value Total OI	Average of OI Change %	Average of Price Change %	Total Volume	Average of Volume Change %
Consumer Discretionary	578925430	1.0%	-0.9%	76648375	16.5%
Consumer Staples	167439500	6.2%	-0.6%	28724662	51.2%
Energy	287893429	1.8%	-2.2%	64937609	60.8%
Financials	1624834768	1.7%	-0.2%	189216103	29.8%
Health Care	209348600	5.3%	0.7%	42891059	72.4%
Industrials	166532775	2.8%	-0.3%	27603940	53.4%
Information Technology	167546900	5.3%	-0.1%	22083940	11.3%
Materials	1335694800	0.8%	-0.9%	230041518	-5.6%
Telecommunication Services	284324100	2.1%	-0.4%	66583321	34.6%
Utilities	1047357900	7.1%	-0.5%	191847975	54.3%
<b>Grand Total</b>	<b>5869898202</b>	<b>2.7%</b>	<b>-0.5%</b>	<b>940578502</b>	<b>31.0%</b>

Institutional Equity Research

## MARKET LENS

NIFTY 10079 IN FOCUS

September 14, 2017

Support	10030	Stock in Focus	Tech Mahindra
	9960	Positional Pick	LUPIN
Resistance	10140	Intraday Pick	INFRATEL
	10200	Intraday Pick	HINDALCO

### Pivot Table

Name	LTP	Support 2	Support 1	Pivot	Resistance 1	Resistance 2
Nifty 50	10079.3	10022.7	10051.0	10091.5	10119.8	10160.3
Nifty Bank	24831.8	24628.5	24730.1	24839.5	24941.1	25050.5
ACC LIMITED	1843.8	1818.9	1831.3	1850.6	1863.1	1882.4
ADANI PORT & SEZ LTD	390.0	381.5	385.8	390.3	394.5	399.0
AMBUJA CEMENTS LTD	285.8	279.3	282.5	287.0	290.3	294.8
ASIAN PAINTS LIMITED	1255.0	1242.3	1248.6	1255.3	1261.6	1268.3
AUROBINDO PHARMA LTD	760.0	740.6	750.3	761.0	770.7	781.4
AXIS BANK LIMITED	499.3	489.4	494.4	500.0	504.9	510.5
BAJAJ AUTO LIMITED	2935.0	2889.0	2912.0	2943.0	2966.0	2997.0
BANK OF BARODA	143.8	139.5	141.6	143.8	145.9	148.1
BHARTI AIRTEL LIMITED	401.7	395.2	398.4	403.1	406.3	411.0
BOSCH LIMITED	22012.4	21808.3	21910.4	22053.0	22155.1	22297.7
BHARAT PETROLEUM CORP LT	500.2	458.5	479.3	509.9	530.7	561.3
CIPLA LTD	554.4	546.8	550.6	556.4	560.2	565.9
COAL INDIA LTD	256.4	252.5	254.4	257.1	259.0	261.7
DR. REDDY'S LABORATORIES	2217.4	2146.0	2181.7	2204.8	2240.5	2263.7
EICHER MOTORS LTD	32226.4	31782.3	32004.4	32304.3	32526.4	32826.3
GAIL (INDIA) LTD	408.0	392.7	400.3	407.7	415.3	422.7
HCL TECHNOLOGIES LTD	871.3	856.0	863.7	869.3	877.0	882.6
HDFC LTD	1778.1	1757.7	1767.9	1783.8	1794.0	1809.9
HDFC BANK LTD	1841.9	1813.3	1827.6	1838.3	1852.6	1863.3
HERO MOTOCORP LIMITED	3893.6	3821.9	3857.7	3913.9	3949.7	4005.9
HINDALCO INDUSTRIES LTD	248.0	243.3	245.7	248.7	251.0	254.0
HINDUSTAN UNILEVER LTD.	1251.0	1237.9	1244.4	1251.7	1258.2	1265.5
INDIABULLS HSG FIN LTD	1268.9	1248.7	1258.8	1275.8	1285.9	1302.9
ICICI BANK LTD.	292.0	290.1	291.1	292.2	293.1	294.2
INDUSIND BANK LIMITED	1744.8	1720.1	1732.4	1748.7	1761.0	1777.3
BHARTI INFRATEL LTD.	370.7	362.5	366.6	370.5	374.5	378.4
INFOSYS LIMITED	883.8	877.5	880.6	884.1	887.2	890.7
INDIAN OIL CORP LTD	416.0	388.3	402.1	421.9	435.7	455.5
ITC LTD	271.5	266.8	269.1	273.3	275.7	279.9
KOTAK MAHINDRA BANK LTD	1020.2	1010.8	1015.5	1020.3	1025.0	1029.8
LARSEN & TOUBRO LTD.	1223.4	1198.5	1210.9	1220.0	1232.4	1241.5
LUPIN LIMITED	992.4	956.8	974.6	991.8	1009.6	1026.8
MAHINDRA & MAHINDRA LTD	1307.4	1293.1	1300.2	1310.1	1317.3	1327.2
MARUTI SUZUKI INDIA LTD.	8122.6	8041.1	8081.8	8140.9	8181.7	8240.8
NTPC LTD	169.0	166.9	167.9	169.7	170.7	172.5
OIL AND NATURAL GAS CORP.	161.1	159.6	160.3	161.6	162.3	163.5
POWER GRID CORP. LTD.	213.8	211.2	212.5	214.3	215.6	217.4
RELIANCE INDUSTRIES LTD	849.0	805.7	827.4	843.6	865.3	881.5
STATE BANK OF INDIA	273.4	270.1	271.7	274.2	275.8	278.3
SUN PHARMACEUTICAL IND L	503.4	467.3	485.3	497.9	515.9	528.5
TATA MOTORS LIMITED	389.7	383.5	386.6	390.3	393.3	397.0
TATA MOTORS DVR 'A' ORD	220.1	216.0	218.1	221.0	223.1	226.0
TATA POWER CO LTD	84.8	81.8	83.3	85.0	86.5	88.2
TATA STEEL LIMITED	679.7	671.6	675.6	679.7	683.8	687.9
TATA CONSULTANCY SERV LT	2489.2	2442.2	2465.7	2498.7	2522.2	2555.1
TECH MAHINDRA LIMITED	440.8	427.5	434.2	443.9	450.6	460.3
ULTRATECH CEMENT LIMITED	4184.9	4142.5	4163.7	4195.3	4216.5	4248.1
VEDANTA LIMITED	327.1	321.2	324.2	328.2	331.2	335.2
WIPRO LTD	295.9	292.6	294.2	297.0	298.6	301.4
YES BANK LIMITED	1839.0	1815.1	1827.1	1844.5	1856.5	1873.9
ZEE ENTERTAINMENT ENT LTD	532.7	524.2	528.5	532.2	536.5	540.2



Institutional Equity Research

## MARKET LENS

NIFTY 10079 IN FOCUS

September 14, 2017

Support	10030	Stock in Focus	<b>Tech Mahindra</b>
	9960	Positional Pick	LUPIN
Resistance	10140	Intraday Pick	INFRATEL
	10200	Intraday Pick	HINDALCO

### Simple Moving Average

Scrip Name	Close Rate	20-SMA	50-SMA	100-SMA	200-SMA	HIGH_52WEEK	LOW_52WEEK
NIFTY	10079.3	9908.9	9899.2	9695.8	9167.6	10137.9	7893.8
BANK NIFTY	24831.8	24331.4	24277.6	23647.2	21712.4	25198.8	17606.9
SENSEX 50	10472.9	10295.3	10276.3	10052.1	9481.0	10486.6	8144.6
ACC	1843.8	1802.6	1756.2	1693.9	1543.2	1870.0	1256.6
ADANI PORTS	390.0	386.8	387.6	369.1	334.4	421.5	245.2
AMBUJACEM	285.8	278.9	270.0	257.2	240.5	291.5	191.0
ASIANPAINT	1255.0	1178.2	1156.5	1145.2	1063.1	1262.0	849.6
AUROPHARMA	760.0	731.0	725.2	667.7	676.0	895.0	503.1
AXISBANK	499.3	499.7	507.6	507.9	494.6	612.4	424.4
BAJAJ-AUTO	2935.0	2844.7	2825.4	2847.1	2805.1	3047.5	2510.0
BANKBARODA	143.8	141.0	152.6	165.0	164.7	202.5	135.3
BHARTIARTL	401.7	416.4	412.4	388.9	362.5	438.2	283.1
BHEL	132.4	129.0	135.1	144.6	145.0	182.8	116.1
BOSCHLTD	22012.4	22029.7	23232.1	23399.8	22519.9	25240.0	17671.6
BPCL	500.2	514.8	489.0	479.4	455.8	546.1	367.9
CIPLA	554.4	564.4	560.8	552.8	567.3	621.3	480.2
COALINDIA	256.4	246.2	248.8	257.3	281.0	337.3	233.7
DRREDDY	2217.4	2096.6	2341.0	2474.3	2701.4	3399.9	1901.2
EICHERMOT	32226.4	31603.0	30267.7	29057.2	26274.2	33480.0	19530.0
GAIL	408.0	383.4	377.8	387.0	371.2	433.7	268.3
GRASIM	1229.6	1163.9	1112.0	1036.7	915.6	1276.5	652.3
HCLTECH	871.3	864.8	870.2	858.4	845.6	928.0	736.0
HDFC	1778.1	1762.7	1715.8	1650.9	1499.9	1802.0	1183.2
HDFCBANK	1841.9	1773.3	1746.0	1676.5	1491.7	1849.0	1158.0
HEROMOTOCO	3893.6	3958.6	3846.0	3723.8	3452.7	4092.0	2849.5
HINDALCO	248.0	238.5	224.5	209.6	195.4	255.5	138.6
HINDUNILVR	1251.0	1205.0	1171.2	1102.5	981.7	1259.0	782.0
ICICIBANK	292.0	295.5	296.6	287.9	267.0	314.5	217.4
IDEA	82.6	86.1	88.4	85.7	87.2	123.5	65.8
INDUSINDBK	1744.8	1674.7	1625.1	1544.5	1399.1	1804.0	1036.7
INFRATEL	370.7	378.9	394.3	384.2	359.1	425.0	281.8
INFY	883.8	911.4	951.0	950.4	967.9	1082.7	860.0
ITC	271.5	279.4	291.9	294.9	276.3	367.7	222.0
KOTAKBANK	1020.2	987.9	986.4	968.0	876.2	1031.7	692.5
LT	1223.4	1147.0	1158.0	1160.0	1069.9	1234.0	863.4
LUPIN	992.4	973.7	1033.7	1118.6	1295.1	1573.6	917.6
M&M	1307.4	1345.2	1371.0	1368.2	1307.8	1459.0	1141.4
MARUTI	8122.6	7751.6	7650.3	7306.8	6530.9	8200.0	4765.3
NTPC	169.0	170.1	167.9	164.0	164.6	179.2	143.3
ONGC	161.1	160.4	162.1	168.6	181.5	211.8	155.2
POWERGRID	213.8	217.5	217.4	212.2	203.1	226.6	167.0
RELIANCE	849.0	799.8	787.4	734.2	653.0	859.9	465.0
SBIN	273.4	276.6	286.6	288.0	277.5	315.3	235.0
SUNPHARMA	503.4	481.3	517.3	549.3	607.9	796.2	432.7
TATAMOTORS	389.7	381.4	416.1	433.6	456.4	571.1	358.5
TATAPOWER	84.8	79.5	80.8	81.2	81.0	91.2	67.0
TATASTEEL	679.7	643.8	599.1	542.0	497.9	693.0	355.3
TCS	2489.2	2482.8	2470.8	2452.6	2403.8	2709.0	2051.9
TECHM	440.8	429.4	407.0	407.9	441.4	515.3	356.7
ULTRACEMCO	4184.9	4039.0	4078.2	4130.8	3893.5	4533.1	3050.0
WIPRO	295.9	293.9	284.5	271.6	255.9	303.4	204.1
YESBANK	1839.0	1765.3	1699.7	1598.0	1483.2	1865.8	1090.6
ZEEL	532.7	519.9	524.3	519.8	505.8	589.9	427.7

Institutional Equity Research

## MARKET LENS

NIFTY 10079 IN FOCUS

September 14, 2017

Support	10030	Stock in Focus	Tech Mahindra
	9960	Positional Pick	LUPIN
Resistance	10140	Intraday Pick	INFRATEL
	10200	Intraday Pick	HINDALCO

## Bulk Deals Snapshot

Deal Date	Scrip Code	Company	Client Name	Deal Type*	Quantity	Price **
13/09/2017	537292	AGRITECH	BHAVIN Y MEHTA	S	37,741	112.2
13/09/2017	537292	AGRITECH	BHAVIN Y MEHTA	B	19,726	114.0
13/09/2017	538861	AMSONS	VIJAY KUMAR JHINDAL HUF	S	150,000	9.3
13/09/2017	538861	AMSONS	AKSHITA JINDAL	S	150,000	9.4
13/09/2017	538861	AMSONS	aryadeep infrahomes private limited	S	152,065	9.2
13/09/2017	538861	AMSONS	aryadeep infrahomes private limited	B	152,065	9.3
13/09/2017	538861	AMSONS	DHANLAXMI BUILDERS AND DEVELOPERS PRIVATE LIMITED	S	396,593	9.3
13/09/2017	538861	AMSONS	DHANLAXMI BUILDERS AND DEVELOPERS PRIVATE LIMITED	B	326,716	9.2
13/09/2017	538861	AMSONS	NEXTEL GARMENTS PRIVATE LIMITED	S	206,134	9.4
13/09/2017	538861	AMSONS	NEXTEL GARMENTS PRIVATE LIMITED	B	100,400	9.2
13/09/2017	540694	ANG	GUINNESS SECURITIES LIMITED	B	36,800	85.1
13/09/2017	540694	ANG	RAM BALLABH KATTA	S	32,000	85.0
13/09/2017	540694	ANG	NNM SECURITIES PVT LTD	S	35,200	85.2
13/09/2017	540694	ANG	NNM SECURITIES PVT LTD	B	68,800	85.2
13/09/2017	540694	ANG	MIKER FINANCIAL CONSULTANTS PRIVATE LIMITED	S	3,200	87.3
13/09/2017	540694	ANG	MIKER FINANCIAL CONSULTANTS PRIVATE LIMITED	B	27,200	85.4
13/09/2017	531467	ARNAVCORP	SHRIRAM CREDIT COMPANY LIMITED	S	590,000	0.8
13/09/2017	512247	ASHCAP	MEENA PHOPHALIA	B	300,000	5.1
13/09/2017	538713	ATISHAY	GARNET INTERNATIONAL LIMITED	S	122,723	147.0
13/09/2017	538713	ATISHAY	MANGAL SAVITRI BIZCON PRIVATE LIMITED	B	123,223	147.0
13/09/2017	531420	BMBMUMG	RELIGARE FINVEST LIMITED	S	80,000	1.7
13/09/2017	535693	BRAHMINFRA	FE SECURITIES PRIVATE LIMITED	S	155,813	38.0
13/09/2017	535693	BRAHMINFRA	SHARAD KANAYALAL SHAH	B	241,000	37.9
13/09/2017	531158	CATVISION	VIZWISE COMMERCE PRIVATE LIMITED	S	66,000	36.8
13/09/2017	521167	FRONTBUSS	BLACKGOLD MEDIA ENTERTAINMENT LLP	S	200,000	7.1
13/09/2017	500153	GANESHBE	PURITY TRADEMAX LLP	S	276,203	83.1
13/09/2017	500153	GANESHBE	PURITY TRADEMAX LLP	B	276,203	83.1
13/09/2017	526717	GOPALA	SURESH MANGALDAS KANAKIA	S	45,000	105.0
13/09/2017	533204	MANDHANA	HARESH GIRDHARILAL CHHABRIA	B	180,000	8.1
13/09/2017	539767	MNIL	FAITHFUL VANIJYA PRIVATE LIMITED	S	33,600	72.0
13/09/2017	539767	MNIL	CAINS TRADERS PRIVATE LIMITED	B	28,000	72.0
13/09/2017	517548	STARLITE	NARAYANAN ARAKONIMADOM	S	90,173	51.5
13/09/2017	540108	TAHL	JITENDRA JANWARIMAL CHORADIA (HUF)	S	1,078	27.5
13/09/2017	540108	TAHL	JITENDRA JANWARIMAL CHORADIA (HUF)	B	20,000	27.4
13/09/2017	540332	TANVI	ARYAMAN BROKING LIMITED	B	22,000	69.0
13/09/2017	540332	TANVI	SAJANKUMAR RAMESHWARLAL BAJAJ	S	22,000	69.0
13/09/2017	524711	VISTAPH	KESHAVA MURTHY SHIVASHANKAR	S	900,500	44.5
13/09/2017	540252	VOL	BEELINE BROKING LIMITED	S	33,000	68.1

\*B - Buy, S - Sell, \*\* = Weighted Average Trade Price / Trade Price



Institutional Equity Research

MARKET LENS

NIFTY 10079 IN FOCUS

September 14, 2017

Support	10030	Stock in Focus	Tech Mahindra
	9960	Positional Pick	LUPIN
Resistance	10140	Intraday Pick	INFRATEL
	10200	Intraday Pick	HINDALCO

Monthly Economic Calendar

Date Time	Country	Event	Period	Prior
14-Sep-17	AU	Employment Change	Aug	27.9k
14-Sep-17	AU	Unemployment Rate	Aug	5.6%
<b>14-Sep-17</b>	<b>IN</b>	<b>Wholesale Prices YoY</b>	<b>Aug</b>	<b>1.9%</b>
14-Sep-17	JN	Industrial Production MoM	Jul F	--
14-Sep-17	UK	Bank of England Bank Rate	14-Sep	0.3%
14-Sep-17	US	Initial Jobless Claims	9-Sep	--
14-Sep-17	US	CPI MoM	Aug	0.1%
18-Sep-17	EC	CPI YoY	Aug F	1.3%
20-Sep-17	US	FOMC Rate Decision (Upper Bound)	20-Sep	1.3%
21-Sep-17	US	Initial Jobless Claims	16-Sep	--
26-Sep-17	US	Conf. Board Consumer Confidence	Sep	--
28-Sep-17	US	GDP Annualized QoQ	2Q T	--
28-Sep-17	US	Initial Jobless Claims	23-Sep	--
<b>29-Sep-17</b>	<b>IN</b>	<b>Fiscal Deficit INR Crore</b>	<b>Aug</b>	<b>--</b>
29-Sep-17	JN	Jobless Rate	Aug	2.8%
29-Sep-17	JN	Industrial Production MoM	Aug P	--
29-Sep-17	UK	GDP YoY	2Q F	1.7%

Institutional Equity Research

MARKET LENS

NIFTY 10079 IN FOCUS

September 14, 2017

Support	10030	Stock in Focus	Tech Mahindra
	9960	Positional Pick	LUPIN
Resistance	10140	Intraday Pick	INFRATEL
	10200	Intraday Pick	HINDALCO

Corporate Actions

Ex-Dividend

Company Name	Ex-Date	Purpose
AGC Networks Limited	14-Sep-17	Annual General Meeting
Aries Agro Limited	14-Sep-17	Annual General Meeting/Dividend - Rs 2/- Per Share
Arihant Foundations & Housing Limited	14-Sep-17	Annual General Meeting
Arshiya Limited	14-Sep-17	Annual General Meeting
Bal Pharma Limited	14-Sep-17	Annual General Meeting/Dividend - Re 1/- Per Share
Bannari Amman Sugars Limited	14-Sep-17	Annual General Meeting/Dividend - Rs 12.50 Per Share
Biofil Chemicals & Pharmaceuticals Limited	14-Sep-17	Annual General Meeting
Bodal Chemicals Limited	14-Sep-17	Annual General Meeting/Dividend - Re 0.50 Per Share
BSEL Infrastructure Realty Limited	14-Sep-17	Annual General Meeting
Celebrity Fashions Limited	14-Sep-17	Annual General Meeting
Compuage Infocom Limited	14-Sep-17	Dividend - Re 0.40 Per Share
DCM Limited	14-Sep-17	Annual General Meeting
Delta Corp Limited	14-Sep-17	Annual General Meeting/Dividend - Re 0.35 Per Share
Fedders Electric and Engineering Limited	14-Sep-17	Annual General Meeting/Dividend - Re 1/- Per Share
Fertilizers and Chemicals Travancore Limited	14-Sep-17	Annual General Meeting
Finolex Cables Limited	14-Sep-17	Annual General Meeting/Dividend - Rs 3/- Per Share
Ganges Securities Limited	14-Sep-17	Annual General Meeting
Genus Power Infrastructures Limited	14-Sep-17	Annual General Meeting/Dividend - Re 0.35 Per Share
Gitanjali Gems Limited	14-Sep-17	Dividend - Re 0.80 Per Share
Godawari Power And Ispat limited	14-Sep-17	Annual General Meeting
Goldiam International Limited	14-Sep-17	Annual General Meeting
GTN Textiles Limited	14-Sep-17	Annual General Meeting
GTPL Hathway Limited	14-Sep-17	Annual General Meeting/Dividend - Re 1/- Per Share
Gujarat Fluorochemicals Limited	14-Sep-17	Annual General Meeting/ Dividend- Rs 3.50 Per Share
HEG Limited	14-Sep-17	Annual General Meeting
HeidelbergCement India Limited	14-Sep-17	Annual General Meeting/Dividend - Rs 2/- Per Share
Hilton Metal Forging Limited	14-Sep-17	Annual General Meeting
Himatsingka Seide Limited	14-Sep-17	Annual General Meeting/Dividend - Rs 2.50 Per Share
Hind Syntex Limited	14-Sep-17	Annual General Meeting
Hisar Metal Industries Limited	14-Sep-17	Annual General Meeting/Dividend - Re 1/- Per Share
Housing & Urban Development Corporation Limited	14-Sep-17	Annual General Meeting/Dividend - Re 0.05
HT Media Limited	14-Sep-17	Annual General Meeting/Dividend - Re 0.40 Per Share
Hubtown Limited	14-Sep-17	Annual General Meeting
IFGL Refractories Limited	14-Sep-17	Scheme Of Amalgamation
Indian Terrain Fashions Limited	14-Sep-17	Annual General Meeting
Indraprastha Medical Corporation Limited	14-Sep-17	Annual General Meeting/Dividend - Rs 1.80 Per Share
Ind-Swift Laboratories Limited	14-Sep-17	Annual General Meeting
Ind-Swift Limited	14-Sep-17	Annual General Meeting
Industrial Investment Trust Limited	14-Sep-17	Annual General Meeting

Institutional Equity Research

## MARKET LENS

NIFTY 10079 IN FOCUS

September 14, 2017

Support	10030	Stock in Focus	Tech Mahindra
	9960	Positional Pick	LUPIN
Resistance	10140	Intraday Pick	INFRATEL
	10200	Intraday Pick	HINDALCO

### Result Calendar

Company Name	Board Meeting Date	Purpose
Aarvee Denims & Exports Limited	14-Sep-17	Results/Others
Abhishek Corporation Limited	14-Sep-17	Results
Aftek Limited	14-Sep-17	Results
Agarwal Industrial Corporation Limited	14-Sep-17	Results/Others
AksharChem India Limited	14-Sep-17	Results
Alps Industries Limited	14-Sep-17	Board meeting Rescheduled
Anik Industries Limited	14-Sep-17	Results/Others
Ansal Housing and Construction Limited	14-Sep-17	Results
Ansal Housing and Construction Limited	14-Sep-17	Results
Arihant Foundations & Housing Limited	14-Sep-17	Results
Arihant Foundations & Housing Limited	14-Sep-17	Results
ARSS Infrastructure Projects Limited	14-Sep-17	Results
Ashapura Intimates Fashion Limited	14-Sep-17	Results
Assam Company India Limited	14-Sep-17	Board Meeting Adjourned
Autolite (India) Limited	14-Sep-17	Results
Balkrishna Paper Mills Limited	14-Sep-17	Results
Bang Overseas Limited	14-Sep-17	Results
Barak Valley Cements Limited	14-Sep-17	Results/Others
Bedmutha Industries Limited	14-Sep-17	Results/Others
BF Utilities Limited	14-Sep-17	Results
Brooks Laboratories Limited	14-Sep-17	Results
Burnpur Cement Limited	14-Sep-17	Results/Others
Cantabil Retail India Limited	14-Sep-17	Results/Others
Centum Electronics Limited	14-Sep-17	Results
Cerebra Integrated Technologies Limited	14-Sep-17	Results
Cranes Software International Limited	14-Sep-17	Results
Datamatics Global Services Limited	14-Sep-17	Results
Eastern Silk Industries Limited	14-Sep-17	Results
ECE Industries Limited	14-Sep-17	Results
E-Land Apparel Limited	14-Sep-17	Results/Others
Electrotherm (India) Limited	14-Sep-17	Results/Others
Energy Development Company Limited	14-Sep-17	Results
Ester Industries Limited	14-Sep-17	Results
Euro Ceramics Limited	14-Sep-17	Results
Euro Ceramics Limited	14-Sep-17	Results
Euro Multivision Limited	14-Sep-17	Results
Fineotex Chemical Limited	14-Sep-17	Results
Fineotex Chemical Limited	14-Sep-17	Results
Gallantt Ispat Limited	14-Sep-17	Results
Gallantt Metal Limited	14-Sep-17	Results
Gammon India Limited	14-Sep-17	Results
Genesys International Corporation Limited	14-Sep-17	Results
GI Engineering Solutions Limited	14-Sep-17	Results

Institutional Equity Research

## MARKET LENS

NIFTY 10079 IN FOCUS

September 14, 2017

Support	10030	Stock in Focus	Tech Mahindra
	9960	Positional Pick	LUPIN
Resistance	10140	Intraday Pick	INFRATEL
	10200	Intraday Pick	HINDALCO

### Result Calendar

Company Name	Board Meeting Date	Purpose
Goenka Diamond and Jewels Limited	14-Sep-17	Results/Others
Goodluck India Limited	14-Sep-17	Results
Gujarat Sidhee Cement Limited	14-Sep-17	Results
Impex Ferro Tech Limited	14-Sep-17	Results
Indowind Energy Limited	14-Sep-17	Results
Ind-Swift Laboratories Limited	14-Sep-17	Results
Ind-Swift Limited	14-Sep-17	Results
Jai Balaji Industries Limited	14-Sep-17	Results/Others
Jindal Cotex Limited	14-Sep-17	Board Meeting Postponed
Jindal Worldwide Limited	14-Sep-17	Results/Others
Jullundur Motor Agency (Delhi) Limited	14-Sep-17	Results/Others
Kamdhenu Limited	14-Sep-17	Results
KDDL Limited	14-Sep-17	Results/Others
Kesoram Industries Limited	14-Sep-17	Results
Lincoln Pharmaceuticals Limited	14-Sep-17	Results
LML Limited	14-Sep-17	Results
Madras Fertilizers Limited	14-Sep-17	Results
Mahamaya Steel Industries Limited	14-Sep-17	Results
Malu Paper Mills Limited	14-Sep-17	Results/Others
Mangalam Timber Products Limited	14-Sep-17	Board meeting Rescheduled
Manugraph India Limited	14-Sep-17	Results
Melstar Information Technologies Limited	14-Sep-17	Results
Mohit Industries Limited	14-Sep-17	Results
Nagreeeka Exports Limited	14-Sep-17	Results
Nila Infrastructures Limited	14-Sep-17	Results
Nitesh Estates Limited	14-Sep-17	Results
Nitin Fire Protection Industries Limited	14-Sep-17	Results
Nu Tek India Limited	14-Sep-17	Results/Others
OM Metals Infraprojects Limited	14-Sep-17	Results
Optimus Infracom Limited	14-Sep-17	Results
Oricon Enterprises Limited	14-Sep-17	Results
Ortin Laboratories Limited	14-Sep-17	Results
Palred Technologies Limited	14-Sep-17	Results/Others
Paramount Communications Limited	14-Sep-17	Results
Parenteral Drugs (India) Limited	14-Sep-17	Results/Others
PBA Infrastructure Limited	14-Sep-17	Board meeting Rescheduled
Pearl Polymers Limited	14-Sep-17	Results
PG Electroplast Limited	14-Sep-17	Results/Others
Pioneer Embroideries Limited	14-Sep-17	Results
Pochiraju Industries Limited	14-Sep-17	Results/Others
Pokarna Limited	14-Sep-17	Results
Prakash Constrowell Limited	14-Sep-17	Results
Premier Limited	14-Sep-17	Results

Institutional Equity Research

## MARKET LENS

NIFTY	10079	IN FOCUS	
Support	10030	Stock in Focus	Tech Mahindra
	9960	Positional Pick	LUPIN
Resistance	10140	Intraday Pick	INFRATEL
	10200	Intraday Pick	HINDALCO

September 14, 2017

Reliance Securities Limited (RSL), the broking arm of Reliance Capital is one of the India's leading retail broking houses. Reliance Capital is amongst India's leading and most valuable financial services companies in the private sector. Reliance Capital has interests in asset management and mutual funds, life and general insurance, commercial finance, equities and commodities broking, wealth management services, distribution of financial products, private equity, asset reconstruction, proprietary investments and other activities in financial services. The list of associates of RSL is available on the website [www.reliancecapital.co.in](http://www.reliancecapital.co.in). RSL is registered as a Research Analyst under SEBI (Research Analyst) Regulations, 2014

**General Disclaimers:** This Research Report (hereinafter called 'Report') is prepared and distributed by RSL for information purposes only. The recommendations, if any, made herein are expression of views and/or opinions and should not be deemed or construed to be neither advice for the purpose of purchase or sale of any security, derivatives or any other security through RSL nor any solicitation or offering of any investment /trading opportunity on behalf of the issuer(s) of the respective security(ies) referred to herein. These information / opinions / views are not meant to serve as a professional investment guide for the readers. No action is solicited based upon the information provided herein. Recipients of this Report should rely on information/data arising out of their own investigations. Readers are advised to seek independent professional advice and arrive at an informed trading/investment decision before executing any trades or making any investments. This Report has been prepared on the basis of publicly available information, internally developed data and other sources believed by RSL to be reliable. RSL or its directors, employees, affiliates or representatives do not assume any responsibility for, or warrant the accuracy, completeness, adequacy and reliability of such information / opinions / views. While due care has been taken to ensure that the disclosures and opinions given are fair and reasonable, none of the directors, employees, affiliates or representatives of RSL shall be liable for any direct, indirect, special, incidental, consequential, punitive or exemplary damages, including lost profits arising in any way whatsoever from the information / opinions / views contained in this Report.

**Risks:** Trading and investment in securities are subject to market risks. There are no assurances or guarantees that the objectives of any of trading / investment in securities will be achieved. The trades/ investments referred to herein may not be suitable to all categories of traders/investors. The names of securities mentioned herein do not in any manner indicate their prospects or returns. The value of securities referred to herein may be adversely affected by the performance or otherwise of the respective issuer companies, changes in the market conditions, micro and macro factors and forces affecting capital markets like interest rate risk, credit risk, liquidity risk and reinvestment risk. Derivative products may also be affected by various risks including but not limited to counter party risk, market risk, valuation risk, liquidity risk and other risks. Besides the price of the underlying asset, volatility, tenor and interest rates may affect the pricing of derivatives.

**Disclaimers in respect of jurisdiction:** The possession, circulation and/or distribution of this Report may be restricted or regulated in certain jurisdictions by appropriate laws. No action has been or will be taken by RSL in any jurisdiction (other than India), where any action for such purpose(s) is required. Accordingly, this Report shall not be possessed, circulated and/or distributed in any such country or jurisdiction unless such action is in compliance with all applicable laws and regulations of such country or jurisdiction. RSL requires such recipient to inform himself about and to observe any restrictions at his own expense, without any liability to RSL. Any dispute arising out of this Report shall be subject to the exclusive jurisdiction of the Courts in India.

**Disclosure of Interest:** The research analysts who have prepared this Report hereby certify that the views /opinions expressed in this Report are their personal independent views/opinions in respect of the securities and their respective issuers. None of RSL, research analysts, or their relatives had any known direct /indirect material conflict of interest including any long/short position(s) in any specific security on which views/opinions have been made in this Report, during its preparation. RSL's Associates may have other potential/material conflict of interest with respect to any recommendation and related information and opinions at the time of publication of research report. RSL, its Associates, the research analysts, or their relatives might have financial interest in the issuer company(ies) of the said securities. RSL or its Associates may have received a compensation from the said issuer company(ies) in last 12 months for the brokerage or non brokerage services. RSL, its Associates, the research analysts or their relatives have not received any compensation or other benefits directly or indirectly from the said issuer company(ies) or any third party in last 12 months in any respect whatsoever for preparation of this report.

The research analysts has served as an officer, director or employee of the said issuer company(ies)?: No

RSL, its Associates, the research analysts or their relatives holds ownership of 1% or more, in respect of the said issuer company(ies)?: No

**Copyright:** The copyright in this Report belongs exclusively to RSL. This Report shall only be read by those persons to whom it has been delivered. No reprinting, reproduction, copying, distribution of this Report in any manner whatsoever, in whole or in part, is permitted without the prior express written consent of RSL.

RSL's activities were neither suspended nor have defaulted with any stock exchange with whom RSL is registered. Further, there does not exist any material adverse order/judgments/strictures assessed by any regulatory, government or public authority or agency or any law enforcing agency in last three years. Further, there does not exist any material enquiry of whatsoever nature instituted or pending against RSL as on the date of this Report.

**Important** These disclaimers, risks and other disclosures must be read in conjunction with the information / opinions / views of which they form part of.

RSL CIN: U65990MH2005PLC154052. SEBI registration no. ( Stock Brokers: NSE - INB / INF / INE 231234833; BSE - INB / INF / INE 011234839, Depository Participants: CDSL IN-DP-257-2016 IN-DP-NSDL-363-2013, Research Analyst: INH000002384); AMFI ARN No.29889.