

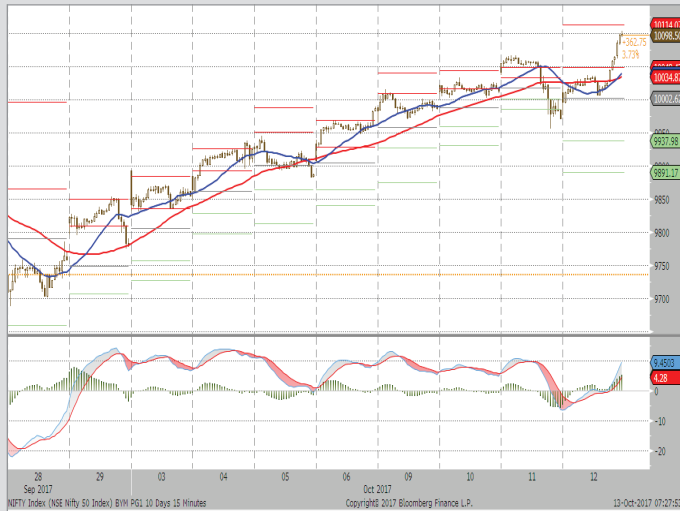
MARKET LENS

| | |
|------------|-------|
| NIFTY | 10096 |
| Support | 10010 |
| | 9950 |
| Resistance | 10130 |
| | 10200 |

IN FOCUS

| | |
|-----------------|------------|
| Stock in Focus | HDFC BANK |
| Positional Pick | MARICO |
| Intraday Pick | TATACOMM |
| Intraday Pick | KAJARIACER |

October 13, 2017



STOCK IN FOCUS

- ▶ Despite adverse operating environment, HDFC Bank continued to deliver strong performance on business growth as well as operating fronts.
- ▶ The Bank has delivered a healthy performance on business growth and operating front in 1QFY18. Despite a mere 6.1% YoY growth in banking industry loan, its loan book grew by 23.4% YoY and 4.8% QoQ. This outperformance on loan growth front with a huge margin vs. the industry is really commendable as it is the second largest bank in India in terms of loan book size.
- ▶ Its gross NPA and net NPA increased by 23.1% QoQ and 37.1% QoQ, respectively in 1QFY18. However, we are not much concerned over this marginal rise in gross NPA, as the headline NPA and PCR continue to remain best-in-class in the industry.
- ▶ We have revised our loan growth target to 20-21% from earlier estimate of 17-18% led by relatively higher loan growth over last two quarters.
- ▶ As a result, we have upwardly revised our earnings estimates by 1.9% and 3.1% for FY18E & FY19E, respectively. We maintain our BUY recommendation on the stock with an upwardly revised Target Price of Rs1,940 (from Rs1,833 earlier) based on 4x FY19E Adjusted Book Value.

Positional Pick

MARICO (PREVIOUS CLOSE: 319) BUY

Fresh long position can be initiated in the range of Rs315-310 for the target of Rs338 with a strict stop loss of Rs300.

Intraday Picks

TATACOMM (PREVIOUS CLOSE: 687) BUY

For today's trade, long position can be initiated at around Rs680 for the target of Rs700-710 with a strict stop loss of Rs670.

KAJARIACER (PREVIOUS CLOSE: 727) BUY

For today's trade, long position can be initiated at around Rs720 for the target of Rs740-745 with a strict stop loss of Rs710.

EQUITY INDICES

| Indices | Absolute Change | | Percentage Change | | |
|----------------------|-----------------|--------|-------------------|-------|-------|
| | Last Trade | Change | 1-D | 1-Mth | YTD |
| Domestic | | | | | |
| BSE Sensex | 32,182.2 | 348.2 | 1.1% | 0.0% | 20.9% |
| CNX Nifty | 10,096.4 | 111.6 | 1.1% | 0.2% | 23.3% |
| S&P CNX 500 | 8,890.1 | 97.6 | 1.1% | 0.3% | 27.3% |
| SENSEX 50 | 10,483.5 | 110.3 | 1.1% | 0.1% | 24.4% |
| International | | | | | |
| DJIA | 22,841.0 | (31.9) | -0.1% | 3.1% | 15.6% |
| NASDAQ | 6,591.5 | (12.0) | -0.2% | 2.0% | 22.4% |
| NIKKEI | 21,001.7 | 47.0 | 0.2% | 5.7% | 9.9% |
| HANGSENG | 28,466.9 | 7.9 | 0.0% | 2.1% | 29.4% |
| MSCI Emerging Mkts | 1,121.6 | 4.3 | 0.4% | 2.0% | 30.1% |

ADRs / GDRs

| | Last Trade | Change | 1-D | 1-Mth | YTD |
|-----------------------|------------|--------|-------|-------|--------|
| Dr. Reddy's Lab (ADR) | 35.9 | (0.3) | -0.7% | 2.7% | -20.8% |
| Tata Motors (ADR) | 32.1 | 0.3 | 1.0% | 5.3% | -6.6% |
| Infosys (ADR) | 14.6 | 0.0 | 0.2% | 0.6% | -1.5% |
| ICICI Bank (ADR) | 8.3 | 0.0 | 0.4% | -9.2% | 21.7% |
| HDFC Bank (ADR) | 94.7 | 1.3 | 1.4% | -4.7% | 56.1% |
| Axis Bank (GDR) | 40.1 | 0.9 | 2.3% | 3.5% | 22.3% |
| Reliance Ind (GDR) | 26.6 | 1.1 | 4.1% | 1.1% | 68.3% |

COMMODITY MARKET

| Key Commodities | Last Trade | Change | 1-D | 1-Mth | YTD |
|-----------------------|------------|--------|------|-------|-------|
| Brent Crude (\$/bl) | 56.5 | 0.2 | 0.4% | 2.4% | -0.6% |
| Silver (\$/Oz) | 17.3 | 0.0 | 0.0% | -3.0% | 8.4% |
| Gold (\$/Oz) | 1,295.1 | 1.4 | 0.1% | -2.1% | 12.9% |
| Copper LME (\$/MT) | 6,861.3 | 105.3 | 1.6% | 3.5% | 24.2% |
| Aluminium LME (\$/MT) | 2,121.8 | 17.0 | 0.8% | 0.8% | 24.5% |
| Baltic Dry | 1,433.0 | 15.0 | 1.1% | 7.2% | 49.1% |

CURRENCY RATES

| | Last Trade | Change | 1-D | 1-Mth | YTD |
|---------|------------|--------|-------|-------|-------|
| USD/INR | 65.1 | 65.1 | -0.1% | 1.6% | -4.2% |
| EUR/INR | 77.2 | 77.0 | 0.3% | 1.0% | 7.7% |

RATES

| | Last Trade | Change | 1-D | 1-Mth | YTD |
|---------------------|------------|--------|------|-------|-------|
| T-Bill - 91 D | 6.1 | 6.1 | 0.0% | -0.2% | -2.0% |
| 10 Year G-sec Yield | 6.8 | 6.7 | 0.2% | 3.0% | 3.7% |

INVESTMENT ACTIVITY (RS. CR)

| Category | BUY | SELL | NET | Prev |
|----------|---------|---------|---------|---------|
| FI | 5,489.3 | 5,597.2 | (108.0) | (108.0) |
| DII | 3,469.5 | 3,235.7 | 233.8 | 233.8 |

EXCHANGE TURNOVER

| Exchange | Rs Crore |
|-----------------|------------|
| BSE Equity | 4,119.3 |
| BSE Derivatives | 0.14 |
| NSE Equity | 31,334.0 |
| NSE Derivatives | 7,98,479.9 |

Institutional Equity Research

MARKET LENS

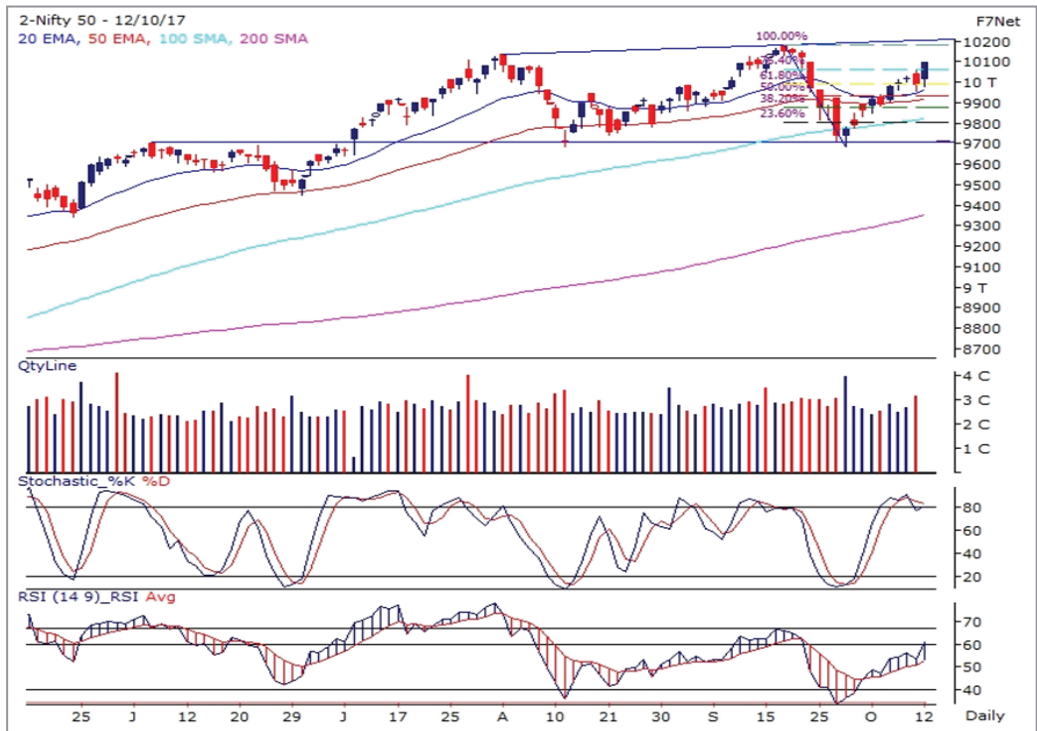
| NIFTY | 10096 | IN FOCUS | |
|------------|-------|-----------------|------------|
| Support | 10010 | Stock in Focus | HDFC BANK |
| | 9950 | Positional Pick | MARICO |
| Resistance | 10130 | Intraday Pick | TATACOMM |
| | 10200 | Intraday Pick | KAJARIACER |

October 13, 2017

Technical Research

MARKET SYNOPSIS

- ▶ On Thursday, NSE-NIFTY managed to recover prior losses post a stable opening and later oscillated in the narrow range. In the second half, index witnessed sharp up-move from sub-10,000 mark and climbed 10,100 level before closing the session.
- ▶ Finally, NIFTY closed the session at 10,096 mark, with the rise of 112 points.
- ▶ NSE Cash segment reported turnover of Rs27,360 crore as compared to Rs31,334 crore earlier.
- ▶ Overall market breadth remained positive, where 1138 stocks advanced against 562 declined stocks.



- ▶ Positive trend was observed across all the sectoral indices during the day barring PSU Bank index (ended flat), where Realty, Energy and Metal indices emerged as top gainers with the increase of 1.7% to 2%. However, rest of the sectoral indices has reported gain of on an average 1%.

NSE-NIFTY OUTLOOK

- ▶ NSE-NIFTY rose to 14-day high, where up-beat global cues and positive domestic triggers has not only saved index from extending losses, but also it has strengthened index to surpass the crucial hurdle of 10,060 level during the day. As mentioned earlier, our view will remain positive on NIFTY, where steady rise in the RSI, positive market breadth and up-beat global sentiment are coinciding with our view and we believe that will help the index to record new high in the next couple of sessions. Fall in the Stochastic is still indicating a cautious trade ahead, but any decline due to that will provide good opportunity to re-enter in the market. In case of any decline, its long-term moving average 100-day SMA (placed at 9,820 mark) will work as key reversal point for the index. On the higher side, now NIFTY will face major hurdle around 10,200 mark.
- ▶ As for the day, support is placed at around 10,010 and then at 9,950 levels, while resistance is observed at 10,130 and then at 10,200 levels.

Institutional Equity Research

MARKET LENS

NIFTY 10096 IN FOCUS

October 13, 2017

| | | | |
|------------|-------|-----------------|------------|
| Support | 10010 | Stock in Focus | HDFC BANK |
| | 9950 | Positional Pick | MARICO |
| Resistance | 10130 | Intraday Pick | TATACOMM |
| | 10200 | Intraday Pick | KAJARIACER |

Technical Research

Positional Pick: Marico

PREV.CLOSE: 319 | RECO: BUY | IN: 315-310 RANGE | TARGET: 338 | STOP LOSS: 300



- ▶ Marico moved upwards after taking support of prior reversal point and later the stock rose to 13-day closing high..
- ▶ Due to recent reversal in the prices, the key technical indicator-RSI and MACD witnessed identical turnaround from their lower levels.
- ▶ As per the current daily set-up, we believe that stock will continue its gradual rise for the short-term, where it will face hurdle around prior resistance zone.
- ▶ On the lower side, the stock will find strong support around the psychological level-Rs300.
- ▶ Fresh long position can be initiated only in the range of Rs315-310 for the target of Rs338 and with a stop loss of Rs300.

Institutional Equity Research

MARKET LENS

NIFTY 10096 IN FOCUS

October 13, 2017

| | | | |
|------------|-------|-----------------|------------|
| Support | 10010 | Stock in Focus | HDFC BANK |
| | 9950 | Positional Pick | MARICO |
| Resistance | 10130 | Intraday Pick | TATACOMM |
| | 10200 | Intraday Pick | KAJARIACER |

Derivatives Snapshot

- ▶ Nifty opened higher on back of global cues and gained further momentum in the last one hour of trade as bank nifty saw a sharp up move to close at the high point of the day. Nifty closed up by 111 points at 10,096 levels. Among the nifty stocks 40 stocks advanced and 10 declined during the day.
- ▶ Sectorally, except for PSU Banks to end flat all indices gained with the highest gain in Metals, Pharma and Realty indices to gain by 1.9%, 1.5% and 1.4% for the day while other indices gained by 0.8% average.
- ▶ Broader market indices remained weak with NIFTY 100,200 and 500 to close up by 1.1% average while midcap indices and small cap indices gained by 1.3% and 1.2% respectively.
- ▶ Nifty October futures ends with 15 points premium at 10,111 mark, while on other hand, Bank Nifty October futures ended with the premium of 24 points at 24,385 mark.
- ▶ Nifty recouped the losses and closed back to near week high, on the higher side it will resist near to all time high while on the downside the trend reversal point will be 9,850 levels.

Sectoral Activity: Amongst sectoral index, Metals and NBFC remained in focus with positive momentum.

Stock Activity: Hindalco and Canfin Homes observed build up in long position.

TOP 5 PRICE GAINERS

| Stock Name | LTP | % Price Chg | % Vol Chg | %OI Chg | Support | Pivot | Resistance |
|---------------------------|--------|-------------|-----------|---------|---------|-------|------------|
| NBCC (INDIA) LIMITED | 241.95 | 9.36% | 470.27% | 79.15% | 229 | 236 | 249 |
| JINDAL STEEL & POWER LTD | 161.70 | 6.73% | 92.88% | 9.47% | 154 | 158 | 166 |
| HINDALCO INDUSTRIES LTD | 264.45 | 5.99% | 209.41% | 32.48% | 254 | 260 | 270 |
| TORRENT POWER LTD | 226.10 | 5.70% | 206.07% | 4.15% | 218 | 223 | 231 |
| NATIONAL ALUMINIUM CO LTD | 86.25 | 5.38% | 65.30% | 18.45% | 83 | 85 | 88 |

TOP 5 PRICE LOSERS

| Stock Name | LTP | % Price Chg | % Vol Chg | %OI Chg | Support | Pivot | Resistance |
|---------------------------|---------|-------------|-----------|---------|---------|-------|------------|
| JAIN IRRIGATION SYSTEMS | 93.10 | -1.95% | -9.67% | 7.98% | 92 | 94 | 95 |
| BANK OF INDIA | 132.40 | -1.89% | 161.11% | 11.14% | 131 | 133 | 135 |
| PETRONET LNG LIMITED | 253.10 | -1.86% | -45.90% | 2.06% | 251 | 255 | 258 |
| GUJ STATE FERT & CHEM LTD | 136.05 | -1.31% | -39.48% | 7.09% | 134 | 137 | 139 |
| GRASIM INDUSTRIES LTD | 1136.05 | -1.20% | 19.66% | 5.18% | 1123 | 1141 | 1154 |

TOP 5 OI GAINERS

| Stock Name | LTP | % Price Chg | % Vol Chg | %OI Chg | Support | Pivot | Resistance |
|--------------------------|---------|-------------|-----------|---------|---------|-------|------------|
| CAN FIN HOMES LTD | 526.00 | 3.95% | 423.46% | 376.81% | 515 | 522 | 533 |
| NBCC (INDIA) LIMITED | 241.95 | 9.36% | 470.27% | 79.15% | 229 | 236 | 249 |
| TATA CONSULTANCY SERV LT | 2548.20 | 1.91% | 227.70% | 36.98% | 2518 | 2537 | 2566 |
| HINDALCO INDUSTRIES LTD | 264.45 | 5.99% | 209.41% | 32.48% | 254 | 260 | 270 |
| NIIT TECHNOLOGIES LTD | 612.75 | 3.21% | 9.10% | 21.18% | 597 | 610 | 626 |

TOP 5 OI LOSERS

| Stock Name | LTP | % Price Chg | % Vol Chg | %OI Chg | Support | Pivot | Resistance |
|---------------------------|---------|-------------|-----------|---------|---------|-------|------------|
| ARVIND LIMITED | 393.80 | 2.35% | -25.09% | -7.48% | 386 | 390 | 398 |
| HEXAWARE TECHNOLOGIES LTD | 275.20 | 2.84% | -37.19% | -4.20% | 269 | 274 | 281 |
| APOLLO TYRES LTD | 242.50 | 1.83% | -18.63% | -3.99% | 240 | 241 | 244 |
| HERO MOTOCORP LIMITED | 3751.00 | 1.67% | 14.78% | -3.77% | 3710 | 3736 | 3776 |
| MAHINDRA & MAHINDRA LTD | 1338.15 | 1.42% | -49.83% | -3.58% | 1321 | 1331 | 1348 |

Institutional Equity Research

MARKET LENS

NIFTY 10096 IN FOCUS

October 13, 2017

| | | | |
|------------|-------|-----------------|------------|
| Support | 10010 | Stock in Focus | HDFC BANK |
| | 9950 | Positional Pick | MARICO |
| Resistance | 10130 | Intraday Pick | TATACOMM |
| | 10200 | Intraday Pick | KAJARIACER |

Derivatives Snapshot

TOP 5 "RISE IN % DEL CHG"

| Stock Name | LTP | % Price Chg | % Vol Chg | %Del Chg | Support | Pivot | Resistance |
|---------------------------|---------|-------------|-----------|----------|---------|-------|------------|
| CHOLAMANDALAM IN & FIN CO | 1152.40 | 3.74% | 517.65% | 2208.66% | 1119 | 1139 | 1172 |
| BANK OF INDIA | 132.40 | -1.89% | 161.11% | 447.66% | 131 | 133 | 135 |
| NTPC LTD | 176.70 | 1.06% | 288.05% | 391.98% | 175 | 177 | 179 |
| THE RAMCO CEMENTS LIMITED | 690.05 | -0.35% | 154.25% | 352.40% | 685 | 692 | 696 |
| NCC LIMITED | 89.50 | 3.71% | 256.61% | 326.47% | 88 | 89 | 91 |

TOP 5 "DECLINE IN % DEL CHG"

| Stock Name | LTP | % Price Chg | % Vol Chg | %Del Chg | Support | Pivot | Resistance |
|---------------------------|---------|-------------|-----------|----------|---------|-------|------------|
| MAX FINANCIAL SERV LTD | 591.45 | 0.09% | -85.12% | -94.08% | 589 | 593 | 595 |
| SUN TV NETWORK LIMITED | 794.05 | 1.34% | -55.56% | -84.13% | 783 | 790 | 801 |
| INTERGLOBE AVIATION LTD | 1134.30 | 2.28% | -74.97% | -83.94% | 1115 | 1127 | 1146 |
| ZEE ENTERTAINMENT ENT LTD | 517.55 | 0.59% | -77.45% | -83.39% | 512 | 516 | 521 |
| HINDUSTAN ZINC LIMITED | 314.75 | 1.75% | -61.54% | -78.29% | 311 | 314 | 317 |

SECTORAL ACTIVITY

| | Value Total OI | Average of OI Change % | Average of Price Change % | Total Volume | Average of Volume Change % |
|----------------------------|-------------------|---------------------------|------------------------------|------------------|-------------------------------|
| Consumer Discretionary | 626387055 | 0.9% | 1.1% | 65544713 | -21.5% |
| Consumer Staples | 188789350 | 5.0% | 1.4% | 20877252 | 27.0% |
| Energy | 276531877 | 0.4% | 0.7% | 41222558 | -29.2% |
| Financials | 1906996811 | 9.7% | 1.2% | 199735518 | 11.1% |
| Health Care | 199847800 | 0.2% | 1.3% | 28188533 | -4.6% |
| Industrials | 202706325 | 0.8% | 1.2% | 22570506 | -5.8% |
| Information Technology | 178258550 | 5.3% | 1.5% | 22239217 | 16.3% |
| Materials | 1352864050 | 6.9% | 2.1% | 238149073 | 37.4% |
| Telecommunication Services | 317740500 | 3.5% | 1.6% | 39773719 | -2.9% |
| Utilities | 1046150900 | 1.2% | 1.3% | 101061556 | 36.1% |
| Grand Total | 6296273218 | 4.3% | 1.3% | 779362645 | 5.2% |

Institutional Equity Research

NIFTY 10096 IN FOCUS

October 13, 2017

MARKET LENS

| | | | |
|------------|-------|-----------------|------------|
| Support | 10010 | Stock in Focus | HDFC BANK |
| | 9950 | Positional Pick | MARICO |
| Resistance | 10130 | Intraday Pick | TATACOMM |
| | 10200 | Intraday Pick | KAJARIACER |

Pivot Table

| Name | LTP | Support 2 | Support 1 | Pivot | Resistance 1 | Resistance 2 |
|---------------------------|---------|-----------|-----------|---------|--------------|--------------|
| Nifty 50 | 10096.4 | 9932.0 | 10014.2 | 10059.3 | 10141.5 | 10186.7 |
| Nifty Bank | 24361.3 | 23829.4 | 24095.3 | 24244.4 | 24510.3 | 24659.4 |
| ADANI PORT & SEZ LTD | 403.7 | 387.3 | 395.5 | 400.9 | 409.1 | 414.5 |
| AMBUJA CEMENTS LTD | 277.4 | 270.5 | 273.9 | 275.9 | 279.4 | 281.4 |
| ASIAN PAINTS LIMITED | 1158.8 | 1139.7 | 1149.2 | 1155.6 | 1165.2 | 1171.6 |
| AUROBINDO PHARMA LTD | 747.0 | 726.5 | 736.7 | 742.9 | 753.1 | 759.3 |
| AXIS BANK LIMITED | 525.1 | 508.1 | 516.6 | 521.3 | 529.8 | 534.4 |
| BAJAJ AUTO LIMITED | 3155.9 | 3092.3 | 3124.1 | 3148.8 | 3180.6 | 3205.3 |
| BAJAJ FINANCE LIMITED | 1953.2 | 1909.9 | 1931.5 | 1944.6 | 1966.3 | 1979.4 |
| BHARTI AIRTEL LIMITED | 400.3 | 391.2 | 395.7 | 400.3 | 404.8 | 409.4 |
| BOSCH LIMITED | 21159.0 | 20907.1 | 21033.0 | 21124.9 | 21250.8 | 21342.6 |
| BHARAT PETROLEUM CORP LT | 491.6 | 483.0 | 487.3 | 490.8 | 495.1 | 498.5 |
| CIPLA LTD | 589.7 | 574.7 | 582.2 | 587.8 | 595.2 | 600.8 |
| COAL INDIA LTD | 282.4 | 278.5 | 280.5 | 282.1 | 284.1 | 285.7 |
| DR. REDDY'S LABORATORIES | 2379.9 | 2340.0 | 2359.9 | 2378.5 | 2398.4 | 2417.0 |
| EICHER MOTORS LTD | 31336.0 | 30798.4 | 31067.2 | 31289.6 | 31558.4 | 31780.8 |
| GAIL (INDIA) LTD | 446.0 | 438.1 | 442.0 | 448.0 | 451.9 | 457.9 |
| HCL TECHNOLOGIES LTD | 916.0 | 900.4 | 908.2 | 914.1 | 921.9 | 927.8 |
| HDFC LTD | 1755.6 | 1735.5 | 1745.5 | 1752.2 | 1762.2 | 1768.9 |
| HDFC BANK LTD | 1818.8 | 1776.0 | 1797.4 | 1809.4 | 1830.8 | 1842.9 |
| HERO MOTOCORP LIMITED | 3751.0 | 3669.8 | 3710.4 | 3735.5 | 3776.1 | 3801.2 |
| HINDALCO INDUSTRIES LTD | 264.5 | 244.2 | 254.3 | 259.9 | 270.0 | 275.6 |
| HINDUSTAN PETROLEUM CORP | 456.3 | 447.1 | 451.7 | 455.3 | 459.9 | 463.5 |
| HINDUSTAN UNILEVER LTD. | 1241.0 | 1205.3 | 1223.2 | 1234.1 | 1251.9 | 1262.8 |
| INDIABULLS HSG FIN LTD | 1272.5 | 1243.1 | 1257.8 | 1267.1 | 1281.8 | 1291.1 |
| ICICI BANK LTD. | 267.6 | 262.6 | 265.1 | 266.5 | 269.0 | 270.4 |
| INDUSIND BANK LIMITED | 1743.0 | 1680.1 | 1711.5 | 1730.8 | 1762.2 | 1781.5 |
| BHARTI INFRATEL LTD. | 432.0 | 388.9 | 410.5 | 424.2 | 445.8 | 459.5 |
| INFOSYS LIMITED | 927.3 | 912.3 | 919.8 | 927.1 | 934.6 | 941.9 |
| INDIAN OIL CORP LTD | 414.9 | 409.7 | 412.3 | 417.1 | 419.7 | 424.4 |
| ITC LTD | 267.0 | 261.5 | 264.3 | 266.7 | 269.5 | 271.9 |
| KOTAK MAHINDRA BANK LTD | 1057.6 | 1028.2 | 1042.9 | 1052.7 | 1067.4 | 1077.2 |
| LARSEN & TOUBRO LTD. | 1143.7 | 1129.5 | 1136.6 | 1141.3 | 1148.4 | 1153.2 |
| LUPIN LIMITED | 1061.3 | 1047.7 | 1054.5 | 1059.2 | 1066.0 | 1070.8 |
| MAHINDRA & MAHINDRA LTD | 1338.2 | 1303.9 | 1321.0 | 1331.3 | 1348.5 | 1358.8 |
| MARUTI SUZUKI INDIA LTD. | 7904.3 | 7796.1 | 7850.2 | 7884.1 | 7938.2 | 7972.1 |
| NTPC LTD | 176.7 | 173.0 | 174.8 | 176.9 | 178.7 | 180.8 |
| OIL AND NATURAL GAS CORP. | 169.7 | 166.5 | 168.1 | 169.4 | 171.0 | 172.2 |
| POWER GRID CORP. LTD. | 202.3 | 200.0 | 201.1 | 202.7 | 203.8 | 205.4 |
| RELIANCE INDUSTRIES LTD | 872.8 | 829.2 | 851.0 | 863.9 | 885.7 | 898.6 |
| STATE BANK OF INDIA | 251.2 | 246.4 | 248.8 | 250.9 | 253.3 | 255.3 |
| SUN PHARMACEUTICAL IND L | 539.6 | 525.9 | 532.7 | 538.9 | 545.7 | 551.9 |
| TATA MOTORS LIMITED | 420.2 | 404.7 | 412.4 | 417.1 | 424.9 | 429.6 |
| TATA STEEL LIMITED | 691.6 | 676.5 | 684.1 | 688.9 | 696.5 | 701.3 |
| TATA CONSULTANCY SERV LT | 2548.2 | 2488.7 | 2518.5 | 2536.7 | 2566.5 | 2584.7 |
| TECH MAHINDRA LIMITED | 474.2 | 462.1 | 468.1 | 471.6 | 477.6 | 481.1 |
| ULTRATECH CEMENT LIMITED | 3919.8 | 3840.9 | 3880.4 | 3922.3 | 3961.8 | 4003.7 |
| UPL LIMITED | 809.3 | 798.2 | 803.7 | 810.6 | 816.2 | 823.1 |
| VEDANTA LIMITED | 319.5 | 309.7 | 314.6 | 317.7 | 322.6 | 325.7 |
| WIPRO LTD | 293.5 | 287.7 | 290.6 | 292.8 | 295.7 | 297.9 |
| YES BANK LIMITED | 365.4 | 355.4 | 360.4 | 364.0 | 369.0 | 372.7 |
| ZEE ENTERTAINMENT ENT LTD | 517.6 | 506.9 | 512.2 | 515.6 | 520.9 | 524.3 |

Institutional Equity Research

MARKET LENS

NIFTY 10096 IN FOCUS

October 13, 2017

| | | | |
|------------|-------|-----------------|------------|
| Support | 10010 | Stock in Focus | HDFC BANK |
| | 9950 | Positional Pick | MARICO |
| Resistance | 10130 | Intraday Pick | TATACOMM |
| | 10200 | Intraday Pick | KAJARIACER |

Simple Moving Average

| Scrip Name | Close Rate | 20-SMA | 50-SMA | 100-SMA | 200-SMA | HIGH_52WEEK | LOW_52WEEK |
|-------------|------------|---------|---------|---------|---------|-------------|------------|
| NIFTY | 10096.4 | 9973.4 | 9943.8 | 9819.3 | 9350.6 | 10179.0 | 7893.8 |
| BANK NIFTY | 24361.3 | 24387.5 | 24405.1 | 24021.6 | 22317.0 | 25198.8 | 17606.9 |
| SENSEX 50 | 10483.5 | 10366.0 | 10331.0 | 10190.0 | 9679.8 | 10552.0 | 8144.6 |
| ACC | 1741.1 | 1717.3 | 1766.1 | 1707.5 | 1582.4 | 1870.0 | 1256.6 |
| ADANI PORTS | 403.7 | 394.0 | 392.7 | 379.7 | 346.1 | 421.5 | 245.2 |
| AMBUJACEM | 277.4 | 274.2 | 275.2 | 261.7 | 247.3 | 291.5 | 191.0 |
| ASIANPAINT | 1158.8 | 1186.4 | 1175.8 | 1157.0 | 1090.1 | 1262.0 | 849.6 |
| AUROPHARMA | 747.0 | 729.5 | 727.6 | 691.8 | 677.6 | 854.0 | 503.1 |
| AXISBANK | 525.1 | 512.0 | 504.8 | 508.9 | 499.7 | 547.5 | 424.4 |
| BAJAJ-AUTO | 3155.9 | 3092.8 | 2942.7 | 2880.5 | 2847.6 | 3216.9 | 2510.0 |
| BANKBARODA | 138.6 | 141.7 | 144.1 | 156.0 | 162.8 | 202.5 | 135.3 |
| BHARTIARTL | 400.3 | 390.1 | 406.0 | 395.4 | 369.7 | 438.2 | 283.1 |
| BHEL | 84.4 | 85.9 | 86.7 | 90.5 | 96.9 | 121.8 | 77.4 |
| BOSCHLTD | 21159.0 | 21258.8 | 22115.1 | 23002.5 | 22632.4 | 25240.0 | 17671.6 |
| BPCL | 491.6 | 486.0 | 499.4 | 479.7 | 463.8 | 546.1 | 389.2 |
| CIPLA | 589.7 | 579.8 | 570.1 | 556.9 | 568.3 | 621.3 | 480.2 |
| COALINDIA | 282.4 | 267.2 | 254.3 | 255.3 | 277.6 | 337.3 | 233.7 |
| DRREDDY | 2379.9 | 2353.2 | 2213.6 | 2420.0 | 2622.0 | 3399.9 | 1901.2 |
| EICHERMOT | 31336.0 | 31456.3 | 31438.3 | 29914.3 | 27230.1 | 33480.0 | 19530.0 |
| GAIL | 446.0 | 419.7 | 396.2 | 387.9 | 381.2 | 457.5 | 300.8 |
| GRASIM | 1136.1 | 1169.6 | 1153.8 | 1076.6 | 961.5 | 1276.5 | 652.3 |
| HCLTECH | 916.0 | 888.6 | 877.3 | 869.7 | 853.8 | 928.0 | 736.0 |
| HDFC | 1755.6 | 1756.3 | 1753.8 | 1692.0 | 1550.1 | 1802.0 | 1183.2 |
| HDFCBANK | 1818.8 | 1814.6 | 1790.3 | 1730.4 | 1554.5 | 1868.0 | 1158.0 |
| HEROMOTOCO | 3751.0 | 3793.8 | 3876.2 | 3801.5 | 3516.3 | 4092.0 | 2849.5 |
| HINDALCO | 264.5 | 243.9 | 238.7 | 219.8 | 202.4 | 265.4 | 147.4 |
| HINDUNILVR | 1241.0 | 1226.1 | 1207.4 | 1155.9 | 1021.6 | 1287.6 | 782.0 |
| ICICIBANK | 267.6 | 279.6 | 289.1 | 291.0 | 271.3 | 314.5 | 217.4 |
| IDEA | 74.6 | 76.9 | 83.4 | 83.8 | 87.3 | 123.5 | 65.8 |
| INDUSINDBK | 1743.0 | 1707.9 | 1681.8 | 1600.0 | 1462.0 | 1804.0 | 1036.7 |
| INFRA TEL | 432.0 | 395.7 | 388.2 | 389.7 | 362.4 | 438.0 | 281.8 |
| INFY | 927.3 | 909.2 | 924.6 | 944.3 | 960.4 | 1082.7 | 860.0 |
| ITC | 267.0 | 265.8 | 273.6 | 292.2 | 279.8 | 367.7 | 222.0 |
| KOTAKBANK | 1057.6 | 1021.7 | 1003.2 | 987.9 | 905.1 | 1062.5 | 692.5 |
| LT | 1143.7 | 1169.4 | 1159.7 | 1162.6 | 1096.2 | 1250.5 | 863.4 |
| LUPIN | 1061.3 | 1021.0 | 993.8 | 1062.0 | 1247.6 | 1573.6 | 917.6 |
| M&M | 1338.2 | 1284.7 | 1331.2 | 1357.1 | 1318.5 | 1459.0 | 1141.4 |
| MARUTI | 7904.3 | 7962.6 | 7826.9 | 7572.9 | 6814.2 | 8200.0 | 4765.3 |
| NTPC | 176.7 | 169.6 | 170.3 | 165.5 | 165.3 | 179.2 | 143.3 |
| ONGC | 169.7 | 168.6 | 164.5 | 165.4 | 178.5 | 211.8 | 155.2 |
| POWERGRID | 202.3 | 208.8 | 215.0 | 212.4 | 205.5 | 226.6 | 167.0 |
| RELIANCE | 872.8 | 827.5 | 811.2 | 763.1 | 684.6 | 876.8 | 465.0 |
| SBIN | 251.2 | 259.4 | 274.3 | 280.9 | 277.5 | 315.3 | 235.0 |
| SUNPHARMA | 539.6 | 516.2 | 497.9 | 524.0 | 591.8 | 759.0 | 432.7 |
| TATAMOTORS | 420.2 | 413.7 | 401.3 | 428.5 | 451.9 | 564.0 | 358.5 |
| TATAPOWER | 81.7 | 81.1 | 80.2 | 80.7 | 81.6 | 91.2 | 67.0 |
| TATASTEEL | 691.6 | 670.7 | 644.3 | 585.9 | 523.7 | 704.4 | 366.3 |
| TCS | 2548.2 | 2481.7 | 2485.5 | 2477.4 | 2427.3 | 2709.0 | 2051.9 |
| TECHM | 474.2 | 455.7 | 434.6 | 413.6 | 439.5 | 515.3 | 356.7 |
| ULTRACEMCO | 3919.8 | 3996.2 | 4018.4 | 4066.2 | 3951.2 | 4533.1 | 3050.0 |
| WIPRO | 293.5 | 287.8 | 290.6 | 278.9 | 261.5 | 303.4 | 204.1 |
| YESBANK | 365.4 | 363.8 | 358.0 | 330.1 | 309.5 | 382.9 | 218.1 |
| ZEEL | 517.6 | 527.1 | 525.3 | 520.8 | 513.8 | 568.6 | 427.7 |

Institutional Equity Research

MARKET LENS

NIFTY 10096 IN FOCUS

October 13, 2017

| | | | |
|------------|-------|-----------------|------------|
| Support | 10010 | Stock in Focus | HDFC BANK |
| | 9950 | Positional Pick | MARICO |
| Resistance | 10130 | Intraday Pick | TATACOMM |
| | 10200 | Intraday Pick | KAJARIACER |

Bulk Deals Snapshot

| Deal Date | Scrip Code | Company | Client Name | Deal Type* | Quantity | Price |
|------------|------------|------------|---|------------|-----------|-------|
| 12/10/2017 | 539265 | AMRAFIN | PRIME FINVEST | S | 130,800 | 29.4 |
| 12/10/2017 | 539403 | ARAMBHAN | GARNET INTERNATIONAL LIMITED | B | 30,000 | 34.0 |
| 12/10/2017 | 524640 | ARCHITORG | KIRJAL SECURITIES PRIVATE LIMITED | S | 25,803 | 54.6 |
| 12/10/2017 | 524640 | ARCHITORG | KIRJAL SECURITIES PRIVATE LIMITED | B | 25,803 | 53.9 |
| 12/10/2017 | 532813 | CANDC | ASHISH JAIN | B | 200,000 | 40.1 |
| 12/10/2017 | 532813 | CANDC | SHIVAM GOEL | S | 450,000 | 40.0 |
| 12/10/2017 | 539009 | GBLIL | AGARWAL SHRADHA HANSKUMAR | B | 100,000 | 21.0 |
| 12/10/2017 | 539009 | GBLIL | AGRAWAL RADHADEVI R | B | 100,000 | 21.0 |
| 12/10/2017 | 539009 | GBLIL | KAMLA DEVI BAJAJ | B | 39,990 | 20.8 |
| 12/10/2017 | 539009 | GBLIL | VANDANA BAJAJ | B | 40,000 | 20.8 |
| 12/10/2017 | 539009 | GBLIL | MEENA RAHUL KOTHARI | B | 160,000 | 21.0 |
| 12/10/2017 | 539009 | GBLIL | SHRENIKBHAI J GOHIL | S | 50,000 | 20.9 |
| 12/10/2017 | 539009 | GBLIL | NAGINBHAI JESHINGBHAI MAHERIYA | S | 145,000 | 20.9 |
| 12/10/2017 | 539009 | GBLIL | NITESH P PAVSKAR | S | 60,000 | 21.0 |
| 12/10/2017 | 539009 | GBLIL | AJAY R JAGNANI HUF | B | 47,500 | 20.8 |
| 12/10/2017 | 539009 | GBLIL | ANUBHAV R JAGNANI HUF | B | 47,500 | 20.8 |
| 12/10/2017 | 526717 | GOPALA | ASPIRE EMERGING FUND | B | 45,000 | 108.5 |
| 12/10/2017 | 526717 | GOPALA | MAHENDRAKUMAR SOMANI | S | 66,795 | 108.7 |
| 12/10/2017 | 539014 | KALPACOMME | ABHISHEK ASHOKA | S | 232,828 | 30.7 |
| 12/10/2017 | 539014 | KALPACOMME | ABHISHEK ASHOKA | B | 2,828 | 30.7 |
| 12/10/2017 | 539014 | KALPACOMME | RASHMI SANJAY JAIN | S | 83,120 | 30.7 |
| 12/10/2017 | 539014 | KALPACOMME | DHARMENDRA . | S | 80,000 | 30.7 |
| 12/10/2017 | 539014 | KALPACOMME | SANCHIT GOYAL | S | 83,466 | 30.7 |
| 12/10/2017 | 538834 | MEL | RATHOD MANOJ CHHAGANLAL HUF | S | 120,067 | 42.2 |
| 12/10/2017 | 538834 | MEL | RATHOD MANOJ CHHAGANLAL HUF | B | 136,361 | 42.1 |
| 12/10/2017 | 532817 | ORIENTALT | KYMORE ENGINEERING | S | 103,709 | 21.6 |
| 12/10/2017 | 532817 | ORIENTALT | KYMORE ENGINEERING | B | 103,709 | 21.6 |
| 12/10/2017 | 540727 | POOJA | VINODKUMAR AMRUTLAL HARIYA | B | 27,000 | 38.2 |
| 12/10/2017 | 531952 | RIBATEX | MOHIT KUMAR | S | 25,422 | 125.0 |
| 12/10/2017 | 531952 | RIBATEX | MOHIT KUMAR | B | 57,236 | 126.0 |
| 12/10/2017 | 540736 | SIDDH | SHERWOOD SECURITIES PVT LTD | B | 224,390 | 41.1 |
| 12/10/2017 | 540736 | SIDDH | VISHALKUMAR KRISHNAKANT BORISHA | S | 70,000 | 41.6 |
| 12/10/2017 | 540736 | SIDDH | VISHALKUMAR KRISHNAKANT BORISHA | B | 70,000 | 37.5 |
| 12/10/2017 | 540736 | SIDDH | ASHISH SIKKA | S | 1,820 | 42.0 |
| 12/10/2017 | 540736 | SIDDH | ASHISH SIKKA | B | 145,820 | 36.9 |
| 12/10/2017 | 505729 | SINGER | SINGER (INDIA) B.V. | S | 137,507 | 240.7 |
| 12/10/2017 | 513515 | SRIND | BP FINTRADE PRIVATE LIMITED | S | 78,653 | 19.5 |
| 12/10/2017 | 513515 | SRIND | BP FINTRADE PRIVATE LIMITED | B | 78,653 | 19.5 |
| 12/10/2017 | 522085 | STONEIN | RAMILABAHEN A CHAUDHARI | B | 50,000 | 60.4 |
| 12/10/2017 | 532374 | STRTECH | SERUM INSTITUTE OF INDIA PRIVATE LIMITED | B | 4,046,732 | 263.6 |
| 12/10/2017 | 532374 | STRTECH | ADAR CYRUS POONAWALLA . | S | 4,046,732 | 263.6 |
| 12/10/2017 | 532513 | TVSELECT | WAY2WEALTH ENTERPRISES PRIVATE LIMITED | S | 151,618 | 442.5 |
| 12/10/2017 | 532513 | TVSELECT | WAY2WEALTH ENTERPRISES PRIVATE LIMITED | B | 151,618 | 442.1 |
| 12/10/2017 | 539798 | UMIYA | ANIL KUMAR JHA | B | 92,500 | 120.0 |
| 12/10/2017 | 539402 | VAL | TAXUS ENTERPRISES PRIVATE LIMITED | S | 40,000 | 25.0 |
| 12/10/2017 | 539402 | VAL | DAISY DISTRIBUTORS PRIVATE LIMITED | S | 236,000 | 25.0 |
| 12/10/2017 | 539402 | VAL | MUKESH COMMOTRADE LTD | B | 216,000 | 25.0 |
| 12/10/2017 | 539402 | VAL | OVERSKUD MULTI ASSET MANAGEMENT PRIVATE LIMITED | B | 60,000 | 25.0 |

*B - Buy, S - Sell, ** = Weighted Average Trade Price / Trade Price

Institutional Equity Research

MARKET LENS

NIFTY 10096 IN FOCUS

October 13, 2017

| | | | |
|------------|-------|-----------------|------------|
| Support | 10010 | Stock in Focus | HDFC BANK |
| | 9950 | Positional Pick | MARICO |
| Resistance | 10130 | Intraday Pick | TATACOMM |
| | 10200 | Intraday Pick | KAJARIACER |

Monthly Economic Calendar

| Date Time | Country | Event | Period | Prior |
|------------------|-----------|---------------------------------|------------|-------------|
| 13-Oct-17 | US | CPI MoM | Sep | 0.4% |
| 13-Oct-17 | US | U. of Mich. Sentiment | Oct P | -- |
| 16-Oct-17 | CH | CPI YoY | Sep | 1.8% |
| 16-Oct-17 | JN | Industrial Production MoM | Aug F | -- |
| 16-Oct-17 | IN | Wholesale Prices YoY | Sep | 3.2% |
| 17-Oct-17 | UK | CPI YoY | Sep | 2.9% |
| 17-Oct-17 | EC | CPI YoY | Sep F | 1.5% |
| 18-Oct-17 | UK | Jobless Claims Change | Sep | -2.8k |
| 19-Oct-17 | AU | Employment Change | Sep | 54.2k |
| 19-Oct-17 | AU | Unemployment Rate | Sep | 5.6% |
| 19-Oct-17 | CH | GDP YoY | 3Q | 6.9% |
| 19-Oct-17 | US | Initial Jobless Claims | 14-Oct | -- |
| 25-Oct-17 | UK | GDP QoQ | 3Q A | -- |
| 25-Oct-17 | UK | GDP YoY | 3Q A | -- |
| 25-Oct-17 | US | Durable Goods Orders | Sep P | -- |
| 25-Oct-17 | IN | Eight Infrastructure Industries | Sep | -- |
| 26-Oct-17 | EC | ECB Main Refinancing Rate | 26-Oct | 0.0% |
| 26-Oct-17 | US | Initial Jobless Claims | 21-Oct | -- |
| 27-Oct-17 | US | GDP Annualized QoQ | 3Q A | -- |
| 27-Oct-17 | US | U. of Mich. Sentiment | Oct F | -- |
| 31-Oct-17 | JN | Jobless Rate | Sep | -- |
| 31-Oct-17 | JN | Industrial Production MoM | Sep P | -- |
| 31-Oct-17 | EC | GDP SA QoQ | 3Q A | 0.6% |
| 31-Oct-17 | US | Conf. Board Consumer Confidence | Oct | -- |
| 31-Oct-17 | IN | Fiscal Deficit INR Crore | Sep | -- |

Institutional Equity Research

MARKET LENS

NIFTY 10096 IN FOCUS

October 13, 2017

| | | | |
|------------|-------|-----------------|------------|
| Support | 10010 | Stock in Focus | HDFC BANK |
| | 9950 | Positional Pick | MARICO |
| Resistance | 10130 | Intraday Pick | TATACOMM |
| | 10200 | Intraday Pick | KAJARIACER |

Corporate Actions

Ex-Dividend

| Company Name | Ex-Date | Purpose |
|--|-----------|--|
| Hind Rectifiers Limited | 17-Oct-17 | Rights 1:10 @ Premium Rs 78/- |
| IIFL Holdings Limited | 17-Oct-17 | Scheme Of Arrangement |
| Supreme Infrastructure India Limited | 17-Oct-17 | Annual General Meeting |
| Vidhi Specialty Food Ingredients Limited | 17-Oct-17 | Interim Dividend - Re 0.20 Per Share |
| IFCI Limited | 18-Oct-17 | Annual General Meeting |
| Pokarna Limited | 18-Oct-17 | Face Value Split (Sub-Division) - From Rs 10/- Per Share To Rs 2/- Per Share |
| Colgate Palmolive (India) Limited | 25-Oct-17 | Interim Dividend |
| Sasken Technologies Limited | 25-Oct-17 | Interim Dividend |
| Siyaram Silk Mills Limited | 25-Oct-17 | Face Value Split (Sub-Division) - From Rs 10/- Per Share To Rs 2/- Per Share |

Result Calendar

| Company Name | Board Meeting Date | Purpose |
|---|--------------------|------------------|
| Bhansali Engineering Polymers Limited | 13-Oct-17 | Results/Others |
| GNA Axles Limited | 13-Oct-17 | Results |
| Kirloskar Oil Engines Limited | 13-Oct-17 | Results |
| Reliance Industries Limited | 13-Oct-17 | Results |
| Reliance Naval and Engineering Limited | 13-Oct-17 | Results |
| The Karnataka Bank Limited | 13-Oct-17 | Results |
| 3i Infotech Limited | 14-Oct-17 | Results |
| Avenue Supermarts Limited | 14-Oct-17 | Results |
| Gruh Finance Limited | 14-Oct-17 | Results/Others |
| Kewal Kiran Clothing Limited | 14-Oct-17 | Results/Dividend |
| Maharashtra Scooters Limited | 14-Oct-17 | Results |
| Bajaj Finance Limited | 16-Oct-17 | Results |
| Bajaj Finserv Limited | 16-Oct-17 | Results |
| Binani Industries Limited | 16-Oct-17 | Results |
| Colgate Palmolive (India) Limited | 16-Oct-17 | Results/Dividend |
| DCB Bank Limited | 16-Oct-17 | Results |
| Delta Corp Limited | 16-Oct-17 | Results |
| Dewan Housing Finance Corporation Limited | 16-Oct-17 | Results/Dividend |
| Hatsun Agro Product Limited | 16-Oct-17 | Results |
| JM Financial Limited | 16-Oct-17 | Results |
| Kansai Nerolac Paints Limited | 16-Oct-17 | Results |
| Oberoi Realty Limited | 16-Oct-17 | Results |
| Onward Technologies Limited | 16-Oct-17 | Results |
| Persistent Systems Limited | 16-Oct-17 | Results/Others |
| Persistent Systems Limited | 16-Oct-17 | Results |
| Sasken Technologies Limited | 16-Oct-17 | Results/Dividend |
| Sterlite Technologies Limited | 16-Oct-17 | Results |
| Texmaco Infrastructure & Holdings Limited | 16-Oct-17 | Results |

Institutional Equity Research

MARKET LENS

NIFTY 10096 IN FOCUS

October 13, 2017

| | | | |
|------------|-------|-----------------|------------|
| Support | 10010 | Stock in Focus | HDFC BANK |
| | 9950 | Positional Pick | MARICO |
| Resistance | 10130 | Intraday Pick | TATACOMM |
| | 10200 | Intraday Pick | KAJARIACER |

Result Calendar

| Company Name | Board Meeting Date | Purpose |
|---|--------------------|------------------|
| Texmaco Rail & Engineering Limited | 16-Oct-17 | Results |
| The Federal Bank Limited | 16-Oct-17 | Results |
| Zee Learn Limited | 16-Oct-17 | Results |
| ACC Limited | 17-Oct-17 | Results |
| Aditya Birla Money Limited | 17-Oct-17 | Results |
| Atul Limited | 17-Oct-17 | Results |
| Axis Bank Limited | 17-Oct-17 | Results |
| Bajaj Auto Limited | 17-Oct-17 | Results |
| Bajaj Holdings & Investment Limited | 17-Oct-17 | Results |
| Blue Dart Express Limited | 17-Oct-17 | Results |
| CRISIL Limited | 17-Oct-17 | Results/Dividend |
| HT Media Limited | 17-Oct-17 | Results |
| ICICI Lombard General Insurance Company Limited | 17-Oct-17 | Results/Dividend |
| Nucleus Software Exports Limited | 17-Oct-17 | Results |
| Prakash Industries Limited | 17-Oct-17 | Results |
| Pressman Advertising Limited | 17-Oct-17 | Results |
| Prime Securities Limited | 17-Oct-17 | Results |
| R. S. Software (India) Limited | 17-Oct-17 | Results/Others |
| Som Distilleries & Breweries Limited | 17-Oct-17 | Results |
| Tata Sponge Iron Limited | 17-Oct-17 | Results |
| Wipro Limited | 17-Oct-17 | Results |
| NIIT Technologies Limited | 18-Oct-17 | Results/Others |
| SIL Investments Limited | 18-Oct-17 | Results |
| UltraTech Cement Limited | 18-Oct-17 | Results |
| Automotive Stampings and Assemblies Limited | 23-Oct-17 | Results |
| Havells India Limited | 23-Oct-17 | Results |
| NOCIL Limited | 23-Oct-17 | Results |
| The Tinsplate Company of India Limited | 23-Oct-17 | Results |
| Wendt (India) Limited | 23-Oct-17 | Results |
| Zuari Agro Chemicals Limited | 23-Oct-17 | Results |
| Zuari Global Limited | 23-Oct-17 | Results |
| ABB India Limited | 24-Oct-17 | Results |
| Ambuja Cements Limited | 24-Oct-17 | Results |
| Asian Paints Limited | 24-Oct-17 | Results/Dividend |
| Can Fin Homes Limited | 24-Oct-17 | Results |
| Chambal Fertilizers & Chemicals Limited | 24-Oct-17 | Results |
| GKW Limited | 24-Oct-17 | Results |
| HDFC Bank Limited | 24-Oct-17 | Results |
| ICICI Prudential Life Insurance Company Limited | 24-Oct-17 | Results/Dividend |
| Indian Metals & Ferro Alloys Limited | 24-Oct-17 | Results |
| Infosys Limited | 24-Oct-17 | Results/Dividend |
| International Paper APPM Limited | 24-Oct-17 | Results |
| Mahindra CIE Automotive Limited | 24-Oct-17 | Results |

Institutional Equity Research

MARKET LENS

NIFTY 10096 IN FOCUS

October 13, 2017

| | | | |
|------------|-------|-----------------|------------|
| Support | 10010 | Stock in Focus | HDFC BANK |
| | 9950 | Positional Pick | MARICO |
| Resistance | 10130 | Intraday Pick | TATACOMM |
| | 10200 | Intraday Pick | KAJARIACER |

Reliance Securities Limited (RSL), the broking arm of Reliance Capital is one of the India's leading retail broking houses. Reliance Capital is amongst India's leading and most valuable financial services companies in the private sector. Reliance Capital has interests in asset management and mutual funds, life and general insurance, commercial finance, equities and commodities broking, wealth management services, distribution of financial products, private equity, asset reconstruction, proprietary investments and other activities in financial services. The list of associates of RSL is available on the website www.reliancecapital.co.in. RSL is registered as a Research Analyst under SEBI (Research Analyst) Regulations, 2014

General Disclaimers: This Research Report (hereinafter called 'Report') is prepared and distributed by RSL for information purposes only. The recommendations, if any, made herein are expression of views and/or opinions and should not be deemed or construed to be neither advice for the purpose of purchase or sale of any security, derivatives or any other security through RSL nor any solicitation or offering of any investment /trading opportunity on behalf of the issuer(s) of the respective security(ies) referred to herein. These information / opinions / views are not meant to serve as a professional investment guide for the readers. No action is solicited based upon the information provided herein. Recipients of this Report should rely on information/data arising out of their own investigations. Readers are advised to seek independent professional advice and arrive at an informed trading/investment decision before executing any trades or making any investments. This Report has been prepared on the basis of publicly available information, internally developed data and other sources believed by RSL to be reliable. RSL or its directors, employees, affiliates or representatives do not assume any responsibility for, or warrant the accuracy, completeness, adequacy and reliability of such information / opinions / views. While due care has been taken to ensure that the disclosures and opinions given are fair and reasonable, none of the directors, employees, affiliates or representatives of RSL shall be liable for any direct, indirect, special, incidental, consequential, punitive or exemplary damages, including lost profits arising in any way whatsoever from the information / opinions / views contained in this Report.

Risks: Trading and investment in securities are subject to market risks. There are no assurances or guarantees that the objectives of any of trading / investment in securities will be achieved. The trades/ investments referred to herein may not be suitable to all categories of traders/investors. The names of securities mentioned herein do not in any manner indicate their prospects or returns. The value of securities referred to herein may be adversely affected by the performance or otherwise of the respective issuer companies, changes in the market conditions, micro and macro factors and forces affecting capital markets like interest rate risk, credit risk, liquidity risk and reinvestment risk. Derivative products may also be affected by various risks including but not limited to counter party risk, market risk, valuation risk, liquidity risk and other risks. Besides the price of the underlying asset, volatility, tenor and interest rates may affect the pricing of derivatives.

Disclaimers in respect of jurisdiction: The possession, circulation and/or distribution of this Report may be restricted or regulated in certain jurisdictions by appropriate laws. No action has been or will be taken by RSL in any jurisdiction (other than India), where any action for such purpose(s) is required. Accordingly, this Report shall not be possessed, circulated and/or distributed in any such country or jurisdiction unless such action is in compliance with all applicable laws and regulations of such country or jurisdiction. RSL requires such recipient to inform himself about and to observe any restrictions at his own expense, without any liability to RSL. Any dispute arising out of this Report shall be subject to the exclusive jurisdiction of the Courts in India.

Disclosure of Interest: The research analysts who have prepared this Report hereby certify that the views /opinions expressed in this Report are their personal independent views/opinions in respect of the securities and their respective issuers. None of RSL, research analysts, or their relatives had any known direct /indirect material conflict of interest including any long/short position(s) in any specific security on which views/opinions have been made in this Report, during its preparation. RSL's Associates may have other potential/material conflict of interest with respect to any recommendation and related information and opinions at the time of publication of research report. RSL, its Associates, the research analysts, or their relatives might have financial interest in the issuer company(ies) of the said securities. RSL or its Associates may have received a compensation from the said issuer company(ies) in last 12 months for the brokerage or non brokerage services. RSL, its Associates, the research analysts or their relatives have not received any compensation or other benefits directly or indirectly from the said issuer company(ies) or any third party in last 12 months in any respect whatsoever for preparation of this report.

The research analysts has served as an officer, director or employee of the said issuer company(ies)?: No

RSL, its Associates, the research analysts or their relatives holds ownership of 1% or more, in respect of the said issuer company(ies)?: No

Copyright: The copyright in this Report belongs exclusively to RSL. This Report shall only be read by those persons to whom it has been delivered. No reprinting, reproduction, copying, distribution of this Report in any manner whatsoever, in whole or in part, is permitted without the prior express written consent of RSL.

RSL's activities were neither suspended nor have defaulted with any stock exchange with whom RSL is registered. Further, there does not exist any material adverse order/judgments/strictures assessed by any regulatory, government or public authority or agency or any law enforcing agency in last three years. Further, there does not exist any material enquiry of whatsoever nature instituted or pending against RSL as on the date of this Report.

Important These disclaimers, risks and other disclosures must be read in conjunction with the information / opinions / views of which they form part of.

RSL CIN: U65990MH2005PLC154052. SEBI registration no. (Stock Brokers: NSE - INB / INF / INE 231234833; BSE - INB / INF / INE 011234839, Depository Participants: CDSL IN-DP-257-2016 IN-DP-NSDL-363-2013, Research Analyst: INH000002384); AMFI ARN No.29889.