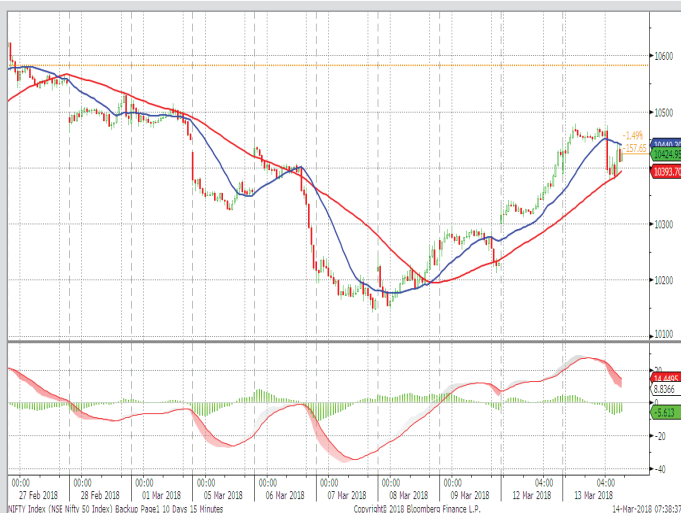


MARKET LENS

NIFTY	10427
Support	10380
	10320
Resistance	10480
	10520

IN FOCUS

Stock in Focus	AJANTA PHARMA
Positional Pick	GODREJIND
Intraday Pick	BALKRISIND
Intraday Pick	HINDUNILVR



STOCK IN FOCUS

- ▶ **Ajanta Pharma (AJP)** surged 1.6% in yesterday's trade on account of increased visibility on domestic formulations business front.
- ▶ We envisage AJP's domestic formulations business to clock 12.4% CAGR over FY17-20E led by improved sales force productivity and new launches (15-20/annum), while its US business is expected to witness gradual improvement led by new launches.
- ▶ We expect AJP's overall sales and PAT to clock 10.4% and 9.1% CAGR over FY17-20E, respectively. While EBITDA margin is expected to be at 33% in FY20E, return ratios are expected to remain healthy (RoCE & RoE seen at 29% & 23% in FY20E).
- ▶ We believe that AJP's long-term fundamentals continue to remain healthy driven by strong traction in India business and healthy growth in Asia and the US. Currently, stock is trading at PE multiple of 22.0x FY19E and 18.5x FY20E EPS. **We maintain our BUY rating on the stock with a Target Price of Rs1,860, valuing the stock at 25x FY20E EPS of Rs74.4.**

Positional Pick

GODREJIND (LTP: 547) BUY

For today's trade, long position can be initiated at 537-542 for target of Rs 585 with a strict stop loss of Rs 524.

Intraday Picks

BALKRISIND (LTP: 1050) BUY

For today's trade, long position can be initiated at Rs 1035-1045 for target of Rs 1079 with a strict stop loss of Rs 1025. Traders are advised to avoid early morning whipsaw.

HINDUNILVR (LTP: 1320) SELL

For today's trade, short position can be initiated at Rs 1330-1335 for target of Rs 1297 with a strict stop loss of Rs 1348. Traders are advised to avoid early morning whipsaw.

EQUITY INDICES

Indices	Absolute Change		Percentage Change		
	Last Trade	Change	1-D	1-Mth	YTD
Domestic					
BSE Sensex	33,856.8	(61.2)	-0.2%	-0.9%	-0.6%
CNX Nifty	10,426.9	5.5	0.1%	-0.7%	-1.0%
S&P CNX 500	9,157.9	36.1	0.4%	-1.8%	-3.5%
SENSEX 50	10,883.8	4.6	0.0%	-0.7%	-0.9%
International					
DJIA	25,007.0	(171.6)	-0.7%	0.5%	1.2%
NASDAQ	7,511.0	(77.3)	-1.0%	5.1%	8.8%
NIKKEI	21,783.2	(184.9)	-0.8%	3.0%	-4.3%
HANGSENG	31,234.6	(366.8)	-1.2%	2.4%	4.4%
MSCI Emerging Mkts	1,223.8	1.6	0.1%	3.2%	5.6%

ADRs / GDRs

	Last Trade	Change	1-D	1-Mth	YTD
Dr. Reddy's Lab (ADR)	34.1	0.5	1.5%	-1.5%	-9.3%
Tata Motors (ADR)	27.4	0.2	0.6%	-6.6%	-17.3%
Infosys (ADR)	18.4	(0.0)	-0.1%	4.7%	13.4%
ICICI Bank (ADR)	9.4	0.0	0.4%	-8.0%	-3.6%
HDFC Bank (ADR)	97.8	0.3	0.3%	-4.4%	-3.8%
Axis Bank (GDR)	40.5	1.1	2.8%	-3.7%	-7.3%
Reliance Ind (GDR)	28.6	0.1	0.4%	-0.7%	0.0%

COMMODITY MARKET

Key Commodities	Last Trade	Change	1-D	1-Mth	YTD
Brent Crude (\$/bl)	64.6	(0.0)	0.0%	0.4%	-3.4%
Silver (\$/Oz)	16.6	0.0	0.1%	-1.4%	-1.9%
Gold (\$/Oz)	1,327.4	0.9	0.1%	-1.7%	1.9%
Copper LME (\$/MT)	6,915.3	39.3	0.6%	-0.4%	-4.0%
Aluminium LME (\$/MT)	2,081.8	13.0	0.6%	-2.3%	-7.7%
Baltic Dry	1,192.0	(9.0)	-0.7%	8.9%	-12.7%

CURRENCY RATES

	Last Trade	Change	1-D	1-Mth	YTD
USD/INR	64.9	65.0	-0.2%	0.9%	1.6%
EUR/INR	80.0	80.0	0.0%	1.5%	4.6%

RATES

	Last Trade	Change	1-D	1-Mth	YTD
T-Bill - 91 D	6.3	6.3	0.0%	-1.4%	1.0%
10 Year G-sec Yield	7.7	7.6	0.3%	2.1%	4.5%

INVESTMENT ACTIVITY (RS. CR)

Category	BUY	SELL	NET	Prev
FI	11,366.3	4,337.9	7,028.4	374.7
DII	5,281.9	3,668.5	1,613.4	(464.6)

EXCHANGE TURNOVER

Exchange	Rs Crore
BSE Equity	4,468.8
BSE Derivatives	0.17
NSE Equity	44,691.6
NSE Derivatives	8,95,731.2

Institutional Equity Research

MARKET LENS

NIFTY 10427 IN FOCUS

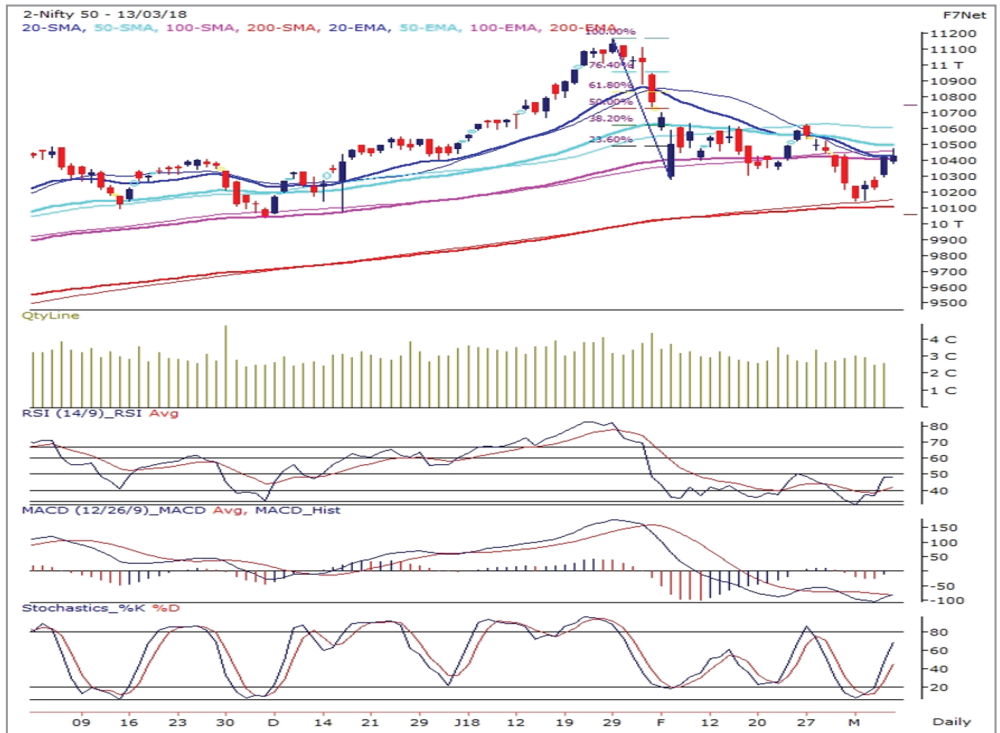
March 14, 2018

Support	10380	Stock in Focus	AJANTA PHARMA
	10320	Positional Pick	GODREJIND
Resistance	10480	Intraday Pick	BALKRISIND
	10520	Intraday Pick	HINDUNILVR

Technical Research

MARKET SYNOPSIS

- ▶ On Tuesday, NSE-NIFTY witnessed decent rebound post a dull opening, but later a surprise sell-off in the late noon trades dragged index 100 points down from its intraday high of 10,479 level quite swiftly. Later the index reversed from sub-10,380 mark (S1) and erased the losses.
- ▶ Finally, NIFTY closed the session with the gain of 5 points at 10,427 mark.
- ▶ NSE Cash segment reported turnover of Rs44,692 crore as compared to Rs27,068 crore earlier.
- ▶ Overall market breadth remained positive, where 1072 stocks advanced against 457 declined stocks.



- ▶ Positive trend was observed across all the sectoral indices during the day barring FMCG and IT (declined by 0.2% and 1.5%), where Pharma, Realty and PSU Bank indices emerged as top gainers with the increase of 1.3%, 1.4% and 2.3%, respectively.

NSE-NIFTY OUTLOOK

- ▶ NSE-NIFTY rose to 7-day high continuing prior daily up-trend, where the index reversed before visiting 10,500 mark and closed the session on a flat note. Due to higher close, the key technical indicators on the daily chart remained neutral to positive, signaling limited up-side left for the index. As mentioned earlier, such kind of rebound cannot be ruled out in NIFTY before the index resumes its southward journey. On the higher side, the index will face hurdles at 10,500 and then at 10,600 levels, which are coinciding with its 50-day moving averages. In case of decline, its 200-day moving averages will continue to work as a key reversal point for NIFTY.
- ▶ As for the day, support is placed at around 10,380 and then at 10,320 levels, while resistance is observed at 10,480 and then at 10,520 levels.

Institutional Equity Research

MARKET LENS

NIFTY	10427	IN FOCUS	
Support	10380	Stock in Focus	AJANTA PHARMA
	10320	Positional Pick	GODREJIND
Resistance	10480	Intraday Pick	BALKRISIND
	10520	Intraday Pick	HINDUNILVR

March 14, 2018

Technical Research

Positional Pick: GODREJIND

CMP: 547 | RECO: BUY | AT: 537-542 | TARGET: 585 | STOP LOSS: 524



- ▶ The stock is trading in a band of 530-560 levels over the past few weeks and has seen some positive momentum in the past few day
- ▶ The key technical indicator RSI has turned upwards one can expect some upward movement from current levels.
- ▶ The stock has crossed its short term average coupled with strong delivery volumes and breakout of the horizontal trading band would take the stock higher.
- ▶ Thus, for trade, long position can be initiated at 537-542 for target of Rs 585 with a stop loss of Rs 524.

Institutional Equity Research

MARKET LENS

NIFTY 10427 IN FOCUS

March 14, 2018

Support	10380	Stock in Focus	AJANTA PHARMA
	10320	Positional Pick	GODREJIND
Resistance	10480	Intraday Pick	BALKRISIND
	10520	Intraday Pick	HINDUNILVR

Derivatives Snapshot

- ▶ Nifty traded very volatile and corrected sharply from the resistances of 10,500 as mentioned with profit booking from the day's high. Nifty closed up by 5 points at 10,426 levels. Among the nifty stocks 29 stocks advanced and 21 declined during the day.
- ▶ Sectorally, it was a mixed bag with PSU Banks, Realty and Pharma to gain by 2.3%, 1.5% and 1.3% respectively while IT and FMCG declined by 1.5% and 0.3% for the day.
- ▶ Broader market indices remained flat with NIFTY 100,200 and 500 to close up by 0.3% average while midcap indices and small cap indices gained by 0.8% and by 1.6% respectively.
- ▶ Nifty March futures ends with 1 point premium at 10,426 mark, while on other hand, Bank Nifty March futures ended with the premium of 78 points at 24,816 mark.
- ▶ Nifty has ended in a doji and we believe markets will see some consolidation in range of 10,300-10,500 levels over the next few days. Midcaps and Smallcaps should outperform from current levels. Nifty 10,500 CE has OI of 48 lakhs as OI and will act as strong resistance from current levels.

Sectoral Activity: Amongst sectoral index, Realty and PSU Banks remained in focus with positive momentum.

Stock Activity: DLF and PNB have observed some amount of short covering in today's trade.

TOP 5 PRICE GAINERS

Stock Name	LTP	% Price Chg	% Vol Chg	%OI Chg	Support	Pivot	Resistance
ANDHRA BANK	39.50	9.87%	-32.62%	-22.28%	36	38	41
PC JEWELLER LTD	365.10	7.86%	270.02%	-1.54%	342	361	384
BANK OF INDIA	102.15	7.41%	390.86%	23.71%	94	102	110
BANK OF BARODA	141.55	7.15%	125.94%	-3.00%	134	139	147
UNION BANK OF INDIA	97.50	6.97%	114.59%	0.54%	90	96	104

TOP 5 PRICE LOSERS

Stock Name	LTP	% Price Chg	% Vol Chg	%OI Chg	Support	Pivot	Resistance
TATA CONSULTANCY SERV LT	2886.80	-5.42%	4111.04%	89.19%	2859	2900	2927
APOLLO HOSPITALS ENTER. L	1095.90	-2.99%	38.98%	14.53%	1080	1105	1121
MINDTREE LIMITED	800.85	-1.75%	28.51%	-1.48%	789	807	819
UNITED SPIRITS LIMITED	3081.40	-1.68%	-43.31%	-3.29%	3034	3100	3147
ADANI ENTERPRISES LIMITED	159.75	-1.54%	-24.53%	0.59%	156	160	164

TOP 5 OI GAINERS

Stock Name	LTP	% Price Chg	% Vol Chg	%OI Chg	Support	Pivot	Resistance
TATA CONSULTANCY SERV LT	2886.80	-5.42%	4111.04%	89.19%	2859	2900	2927
BANK OF INDIA	102.15	7.41%	390.86%	23.71%	94	102	110
INDIAN OIL CORP LTD	407.85	1.80%	34.40%	21.17%	402	408	413
APOLLO HOSPITALS ENTER. L	1095.90	-2.99%	38.98%	14.53%	1080	1105	1121
HEXAWARE TECHNOLOGIES LTD	384.30	2.44%	7.05%	9.91%	373	382	394

TOP 5 OI LOSERS

Stock Name	LTP	% Price Chg	% Vol Chg	%OI Chg	Support	Pivot	Resistance
ANDHRA BANK	39.50	9.87%	-32.62%	-22.28%	36	38	41
BHARTI INFRATEL LTD.	349.00	2.80%	-62.71%	-7.55%	340	345	354
DALMIA BHARAT LIMITED	2869.35	0.92%	76.07%	-5.95%	2847	2873	2895
NBCC (INDIA) LIMITED	196.15	6.23%	144.87%	-5.54%	189	193	201
REPCO HOME FINANCE LTD	568.95	1.34%	-28.48%	-5.46%	558	565	575

Institutional Equity Research

MARKET LENS

NIFTY 10427 IN FOCUS

March 14, 2018

Support	10380	Stock in Focus	AJANTA PHARMA
	10320	Positional Pick	GODREJIND
Resistance	10480	Intraday Pick	BALKRISIND
	10520	Intraday Pick	HINDUNILVR

Derivatives Snapshot

TOP 5 "RISE IN % DEL CHG"

Stock Name	LTP	% Price Chg	% Vol Chg	%Del Chg	Support	Pivot	Resistance
TATA CONSULTANCY SERV LT	2886.80	-5.42%	4111.04%	6308.23%	2859	2900	2927
RBL BANK LIMITED	467.50	0.19%	265.55%	505.20%	461	469	475
ARVIND LIMITED	399.75	-0.67%	137.87%	464.86%	395	401	405
CHENNAI PETROLEUM CORP LT	367.75	5.96%	334.10%	444.53%	352	362	378
HINDUSTAN PETROLEUM CORP	382.95	4.42%	211.94%	328.40%	371	378	390

TOP 5 "DECLINE IN % DEL CHG"

Stock Name	LTP	% Price Chg	% Vol Chg	%Del Chg	Support	Pivot	Resistance
PIRAMAL ENTERPRISES LTD	2481.90	2.75%	83.41%	-99.97%	2426	2458	2514
PVR LIMITED	1322.60	-0.13%	33.59%	-92.28%	1311	1322	1333
TORRENT PHARMACEUTICALS L	1305.50	-0.48%	-77.25%	-85.26%	1294	1308	1319
VOLTAS LTD	639.75	0.14%	-6.09%	-77.85%	635	642	647
KAVERI SEED CO. LTD.	486.35	0.81%	-13.05%	-77.29%	481	486	492

SECTORAL ACTIVITY

	Value Total OI	Average of OI Change %	Average of Price Change %	Total Volume	Average of Volume Change %
Consumer Discretionary	683897975	1.2%	0.8%	97166488	28.3%
Consumer Staples	201244700	0.0%	0.6%	23775325	19.6%
Energy	259003775	1.7%	1.9%	56369086	62.6%
Financials	2217114957	0.4%	2.4%	586353996	49.0%
Health Care	243264418	0.7%	0.9%	27723183	28.4%
Industrials	254941350	0.3%	0.4%	43394267	30.4%
Information Technology	159817650	8.6%	-0.2%	63624341	310.0%
Materials	1516477528	0.0%	1.1%	200516523	10.3%
Telecommunication Services	439975700	-2.0%	1.9%	104081096	-7.4%
Utilities	961141050	-0.9%	1.3%	76086329	7.8%
Grand Total	6936879103	1.0%	1.3%	1279090634	49.0%

Institutional Equity Research

MARKET LENS

NIFTY 10427 IN FOCUS

March 14, 2018

Support	10380	Stock in Focus	AJANTA PHARMA
	10320	Positional Pick	GODREJIND
Resistance	10480	Intraday Pick	BALKRISIND
	10520	Intraday Pick	HINDUNILVR

Pivot Table

Name	LTP	Support 2	Support 1	Pivot	Resistance 1	Resistance 2
Nifty 50	10426.9	10327.0	10376.9	10427.8	10477.7	10528.5
NIFTY100 LowVol30	8060.2	7991.8	8026.0	8063.8	8098.0	8135.7
Nifty GS Compsite	1721.0	1718.1	1719.6	1722.0	1723.4	1725.8
ADANI PORT & SEZ LTD	385.2	375.7	380.4	385.9	390.7	396.2
AMBUJA CEMENTS LTD	238.8	233.6	236.2	240.3	242.9	247.0
ASIAN PAINTS LIMITED	1140.3	1118.4	1129.3	1136.2	1147.1	1154.0
AUROBINDO PHARMA LTD	581.7	571.7	576.7	582.5	587.5	593.3
AXIS BANK LIMITED	531.5	506.7	519.1	527.0	539.4	547.3
BAJAJ AUTO LIMITED	2971.8	2925.2	2948.5	2976.2	2999.5	3027.3
BAJAJ FINANCE LIMITED	1680.7	1645.8	1663.3	1681.1	1698.5	1716.3
BHARTI AIRTEL LIMITED	426.3	415.8	421.0	425.4	430.7	435.1
BOSCH LIMITED	18487.9	18097.8	18292.8	18396.4	18591.5	18695.1
BHARAT PETROLEUM CORP LT	466.7	437.4	452.0	460.2	474.9	483.1
CIPLA LTD	578.8	571.2	575.0	578.9	582.7	586.7
COAL INDIA LTD	294.9	285.9	290.4	294.5	299.0	303.2
DR. REDDY'S LABORATORIES	2181.5	2119.4	2150.5	2172.3	2203.4	2225.2
EICHER MOTORS LTD	28849.4	27739.1	28294.2	28607.1	29162.2	29475.1
GAIL (INDIA) LTD	456.0	433.3	444.6	451.3	462.6	469.3
HCL TECHNOLOGIES LTD	957.0	933.8	945.4	957.2	968.8	980.6
HDFC LTD	1868.5	1835.2	1851.8	1866.7	1883.3	1898.2
HDFC BANK LTD	1860.3	1836.9	1848.6	1866.7	1878.3	1896.4
HERO MOTOCORP LIMITED	3701.2	3643.2	3672.2	3701.0	3730.0	3758.7
HINDALCO INDUSTRIES LTD	226.2	220.1	223.1	225.5	228.6	231.0
HINDUSTAN PETROLEUM CORP	383.0	360.0	371.5	378.5	390.0	397.0
HINDUSTAN UNILEVER LTD.	1320.6	1304.2	1312.4	1321.9	1330.1	1339.7
INDIABULLS HSG FIN LTD	1231.8	1191.5	1211.7	1230.6	1250.7	1269.6
ICICI BANK LTD.	304.4	296.3	300.3	303.7	307.7	311.1
INDUSIND BANK LIMITED	1729.5	1696.9	1713.2	1732.1	1748.4	1767.3
BHARTI INFRA TEL LTD.	349.0	331.0	340.0	345.0	354.0	359.0
INFOSYS LIMITED	1183.8	1163.5	1173.6	1185.3	1195.5	1207.2
INDIAN OIL CORP LTD	407.9	396.7	402.3	407.6	413.2	418.5
ITC LTD	269.5	264.8	267.1	269.6	271.9	274.4
KOTAK MAHINDRA BANK LTD	1083.9	1060.9	1072.4	1090.5	1102.0	1120.0
LARSEN & TOUBRO LTD.	1302.8	1277.7	1290.2	1306.6	1319.1	1335.5
LUPIN LIMITED	780.6	761.7	771.2	778.0	787.5	794.3
MAHINDRA & MAHINDRA LTD	733.0	724.3	728.6	734.8	739.2	745.4
MARUTI SUZUKI INDIA LTD.	8756.1	8608.0	8682.0	8765.0	8839.0	8922.0
NTPC LTD	169.4	165.7	167.6	169.2	171.0	172.6
OIL AND NATURAL GAS CORP.	183.6	180.5	182.0	183.1	184.7	185.8
POWER GRID CORP. LTD.	195.1	191.4	193.2	195.1	197.0	198.9
RELIANCE INDUSTRIES LTD	931.9	915.1	923.5	929.7	938.1	944.4
STATE BANK OF INDIA	254.7	242.8	248.7	255.6	261.5	268.4
SUN PHARMACEUTICAL IND L	523.3	507.6	515.5	520.5	528.3	533.3
TATA MOTORS LIMITED	353.2	346.8	350.0	353.2	356.4	359.7
TATA STEEL LIMITED	628.9	606.6	617.7	625.5	636.6	644.3
TATA CONSULTANCY SERV LT	2886.8	2831.8	2859.3	2899.5	2927.0	2967.2
TECH MAHINDRA LIMITED	619.2	607.9	613.5	619.2	624.9	630.6
ULTRATECH CEMENT LIMITED	4170.0	4106.3	4138.2	4173.6	4205.5	4240.9
UPL LIMITED	722.8	705.6	714.2	721.6	730.2	737.5
VEDANTA LIMITED	321.1	307.0	314.0	319.0	326.0	331.0

Institutional Equity Research

NIFTY 10427 IN FOCUS

March 14, 2018

MARKET LENS

Support	10380	Stock in Focus	AJANTA PHARMA
	10320	Positional Pick	GODREJIND
Resistance	10480	Intraday Pick	BALKRISIND
	10520	Intraday Pick	HINDUNILVR

Simple Moving Average

Scrip Name	Close Rate	20-SMA	50-SMA	100-SMA	200-SMA	HIGH_52WEEK	LOW_52WEEK
NIFTY	10426.9	10410.8	10603.3	10456.3	10150.1	11171.6	9019.3
BANK NIFTY	24738.7	24970.9	25724.9	25514.4	24799.3	27652.1	20753.9
SENSEX 50	10883.8	10867.9	11065.9	10901.9	10559.1	11604.8	9327.5
ACC	1575.4	1614.8	1700.9	1721.6	1717.1	1870.0	1380.4
ADANI PORTS	385.2	399.6	412.1	410.2	395.9	452.4	304.1
AMBUJACEM	238.8	250.7	260.8	265.8	264.4	291.5	227.0
ASIANPAINT	1140.3	1122.6	1145.1	1151.3	1155.4	1262.0	1031.9
AUROPHARMA	581.7	596.1	626.1	670.5	684.2	809.5	503.1
AXISBANK	531.5	532.0	558.5	544.8	527.1	627.6	447.5
BAJAJ-AUTO	2971.8	3009.3	3151.3	3196.7	3044.3	3468.4	2694.5
BANKBARODA	141.6	144.1	154.4	161.6	158.2	206.7	128.1
BHARTIARTL	426.3	420.1	456.9	482.4	440.1	564.8	325.8
BHEL	86.9	91.1	96.1	93.8	91.8	121.8	80.9
BOSCHLTD	18487.9	18841.7	19384.8	19765.5	21368.1	25240.0	17710.0
BPCL	466.7	446.6	469.9	492.9	486.8	551.6	399.3
CIPLA	578.8	592.1	600.0	603.6	581.4	663.4	480.2
COALINDIA	294.9	306.7	297.7	286.6	271.3	317.0	233.7
DRREDDY	2181.5	2178.9	2291.2	2311.1	2362.7	2787.0	1901.2
EICHERMOT	28849.4	27574.5	27874.1	29137.1	29590.0	33480.0	23565.6
GAIL	456.0	456.4	471.3	470.6	430.0	519.5	346.7
GRASIM	1109.2	1125.4	1157.8	1167.6	1125.4	1300.0	836.2
HCLTECH	957.0	941.3	944.3	906.3	889.0	1040.7	796.2
HDFC	1868.5	1816.6	1818.5	1762.7	1731.0	1986.1	1413.3
HDFCBANK	1860.3	1870.3	1893.7	1866.1	1802.5	2015.0	1404.1
HEROMOTOCO	3701.2	3558.9	3620.5	3641.8	3724.7	4092.0	3175.0
HINDALCO	226.2	238.1	252.1	254.7	238.5	284.0	179.4
HINDUNILVR	1320.6	1325.0	1346.5	1315.3	1239.3	1410.0	879.1
ICICIBANK	304.4	312.0	324.3	315.9	303.4	365.7	240.5
IDEA	80.7	82.1	92.2	94.4	89.1	123.5	71.5
INDUSINDBK	1729.5	1678.0	1688.5	1671.0	1640.4	1817.8	1345.3
INFRA TEL	349.0	336.7	349.5	372.6	382.5	482.8	303.7
INFY	1183.8	1146.9	1122.1	1048.7	996.2	1221.1	860.0
ITC	269.5	264.9	268.3	265.0	278.1	367.7	250.0
KOTAKBANK	1083.9	1074.5	1056.6	1038.3	1015.2	1131.0	832.0
LT	1302.8	1310.2	1335.3	1275.7	1219.0	1470.0	1011.3
LUPIN	780.6	802.5	856.6	873.1	964.8	1498.0	750.2
M&M	733.0	729.9	747.4	726.9	703.0	802.6	612.0
MARUTI	8756.1	8810.4	9131.0	8865.8	8234.9	9996.4	5929.4
NTPC	169.4	164.1	168.9	174.1	170.1	188.0	153.2
ONGC	183.6	186.4	192.8	188.2	176.8	212.9	155.2
POWERGRID	195.1	195.2	196.3	201.7	207.1	226.6	189.0
RELIANCE	931.9	927.3	929.9	926.2	848.0	991.0	616.7
SBIN	254.7	266.6	289.9	302.5	291.2	351.3	241.2
SUNPHARMA	523.3	545.3	563.7	548.8	535.2	729.1	432.7
TATAMOTORS	353.2	362.0	392.6	406.6	417.1	488.3	340.2
TATAPOWER	81.4	84.1	89.4	88.8	84.8	101.8	75.8
TATASTEEL	628.9	661.2	688.7	675.4	617.0	747.9	403.4
TCS	2886.8	3003.7	2949.4	2795.0	2636.8	3259.1	2252.8
TECHM	619.2	606.4	582.9	534.3	474.8	636.4	356.7
ULTRACEMCO	4170.0	4143.3	4256.4	4269.4	4164.8	4599.9	3773.3
WIPRO	296.6	290.8	303.3	299.1	289.4	334.0	241.5
YESBANK	312.8	316.5	330.6	322.7	327.7	382.9	275.3
ZEEL	579.2	569.8	582.2	567.5	544.0	619.0	458.1

Institutional Equity Research

MARKET LENS

NIFTY 10427 IN FOCUS

March 14, 2018

Support	10380	Stock in Focus	AJANTA PHARMA
	10320	Positional Pick	GODREJIND
Resistance	10480	Intraday Pick	BALKRISIND
	10520	Intraday Pick	HINDUNILVR

Bulk Deals Snapshot

Deal Date	Scrip Code	Company	Client Name	Deal Type*	Quantity	Price
3/13/2018	541006	ANGEL	GUINNESS SECURITIES LIMITED	B	136,000	27.6
3/13/2018	530723	ASITCFIN	LUO SHIXIN	S	30,000	71.5
3/13/2018	540903	CRPRISK	SHREE MALLIKARJUN TRAD INVEST PRIVATE LIMITED	S	44,000	59.9
3/13/2018	540903	CRPRISK	SHREE MALLIKARJUN TRAD INVEST PRIVATE LIMITED	B	104,000	59.4
3/13/2018	539884	DARSHANORNA	VIVIDOFFSET PRINTERS PRIVATELIMITED	B	50,000	87.0
3/13/2018	539884	DARSHANORNA	SHANKAR GROWTH FUND LIMITED	S	50,000	87.0
3/13/2018	539884	DARSHANORNA	J G SECURITIES PVT LTD	S	50,000	87.0
3/13/2018	539884	DARSHANORNA	J G SECURITIES PVT LTD	B	50,000	87.0
3/13/2018	539839	FRANKLIN	ENRICH CONSULTING PRIVATELIMITED	B	104,000	49.4
3/13/2018	539839	FRANKLIN	ENRICH CONSULTING PRIVATE LIMITED	B	88,000	48.6
3/13/2018	539839	FRANKLIN	MSB E TRADE SECURITIES LIMITED	S	104,000	47.2
3/13/2018	539839	FRANKLIN	MSB E TRADE SECURITIES LIMITED	B	96,000	47.0
3/13/2018	533104	GLOBUSSPR	NAISHADH JAWAHAR PALEJA	S	150,000	122.6
3/13/2018	533104	GLOBUSSPR	NITIKET INVESTMENT PRIVATE LIMITED	B	148,500	122.6
3/13/2018	532951	GSS	KHUSHBOO ANAND BHAYANI	S	115,166	54.4
3/13/2018	532951	GSS	KHUSHBOO ANAND BHAYANI	B	115,166	55.6
3/13/2018	533506	INVENTURE	JAYNEEL SECURITIES PRIVATE LIMITED	B	500,000	23.0
3/13/2018	540526	IRBINVIT	DB INTERNATIONAL (ASIA) LIMITED	S	6,405,000	82.8
3/13/2018	540526	IRBINVIT	NOMURA SINGAPORE LIMITED	B	6,405,000	82.8
3/13/2018	539679	KAPILRAJ	AJAY DHIRAJLAL NATHWANI	S	78,049	19.9
3/13/2018	539679	KAPILRAJ	AJAY DHIRAJLAL NATHWANI	B	57,049	19.9
3/13/2018	539679	KAPILRAJ	DEEPAK PARSHARAM SALVI	S	42,412	19.9
3/13/2018	539679	KAPILRAJ	DEEPAK PARSHARAM SALVI	B	42,412	19.8
3/13/2018	540953	KENVI	VIVIDOFFSET PRINTERS PRIVATELIMITED	B	147,000	18.4
3/13/2018	531328	KRETTOSYS	TEJAS BABULAL SHAH	S	100,000	32.2
3/13/2018	540192	LKPSEC	FINEONE MULTITRADE PRIVATE LIMITED	S	1,080,000	20.3
3/13/2018	540192	LKPSEC	INDIA MAX INVESTMENT FUND LIMITED	B	1,079,000	20.3
3/13/2018	511551	MONARCH	INDO WEBSEC LTD	S	350,000	56.0
3/13/2018	532986	NIRAJ	DILEEP KUMAR SINGH	S	79,258	33.7
3/13/2018	532986	NIRAJ	MALA SINHA	S	6,014	32.4
3/13/2018	532986	NIRAJ	MALA SINHA	B	166,655	34.1
3/13/2018	539273	PECOS	DINESH KAUSHIK	B	15,000	69.7
3/13/2018	540404	PRIME	JOYNET DEVELOPERS LLP	B	46,000	188.8
3/13/2018	540404	PRIME	ACHINTYA SECURITIES PVT. LTD.	S	36,000	189.8
3/13/2018	540404	PRIME	ACHINTYA SECURITIES PVT. LTD.	B	36,000	189.0
3/13/2018	500337	PRIMESECU	CHETAN RASIKLAL SHAH	S	260,000	43.4
3/13/2018	540796	RATNABHUMI	TIA ENTERPRISES PRIVATE LIMITED	S	78,000	33.0
3/13/2018	530419	SUMEDHA	RAMDOOT REALTORS PVT LTD	S	50,000	50.7
3/13/2018	530419	SUMEDHA	RAMDOOT REALTORS PVT LTD	B	50,000	52.1
3/13/2018	530419	SUMEDHA	PARTH INFIN BROKERS PVT. LTD.	S	98,693	51.9
3/13/2018	530419	SUMEDHA	PARTH INFIN BROKERS PVT. LTD.	B	123,019	51.1
3/13/2018	538464	TPROJECT	MANIVASAGAM SHAKTHIRATHNA	S	300,000	34.2
3/13/2018	513063	TRANSFRE	AJAY HANUMAN PRASAD KHEMKA	S	50,000	22.3
3/13/2018	513063	TRANSFRE	SHIVSWAROOP JAGMOHANLAL GUPTA	B	50,000	22.3
3/13/2018	539402	VAL	MUKESH BABULAL SHAH	S	92,000	19.4
3/13/2018	539402	VAL	AMAR MUKESH SHAH	S	40,000	19.5
3/13/2018	539402	VAL	SHRI RAVINDRA MEDIA VENTURES PRIVATE LIMITED	B	132,000	19.5
3/13/2018	538598	VISHAL	SHANTI EXPORTS PVT LTD	B	264,500	666.7

*B - Buy, S - Sell, ** = Weighted Average Trade Price / Trade Price

Institutional Equity Research

MARKET LENS

NIFTY 10427 IN FOCUS

March 14, 2018

Support	10380	Stock in Focus	AJANTA PHARMA
	10320	Positional Pick	GODREJIND
Resistance	10480	Intraday Pick	BALKRISIND
	10520	Intraday Pick	HINDUNILVR

Monthly Economic Calendar

Date Time	Country	Event	Period	Prior6k
14-Mar-18	IN	Wholesale Prices YoY	Feb	2.8%
14-Mar-18	IN	Trade Balance	Feb	-\$16298.5m
14-Mar-18	IN	Exports YoY	Feb	9.1%
14-Mar-18	IN	Imports YoY	Feb	26.1%
15-Mar-18	US	Initial Jobless Claims	10-Mar	--
16-Mar-18	JN	Industrial Production MoM	Jan F	-6.6%
16-Mar-18	EC	CPI YoY	Feb F	1.3%
16-Mar-18	US	U. of Mich. Sentiment	Mar P	99.7
20-Mar-18	UK	CPI MoM	Feb	-0.5%
20-Mar-18	UK	CPI YoY	Feb	3.0%
21-Mar-18	US	FOMC Rate Decision (Upper Bound)	21-Mar	1.5%
21-Mar-18	AU	Employment Change	Feb	16.0k
21-Mar-18	AU	Unemployment Rate	Feb	5.5%
22-Mar-18	UK	Bank of England Bank Rate	22-Mar	0.5%
22-Mar-18	US	Initial Jobless Claims	17-Mar	--
23-Mar-18	US	Durable Goods Orders	Feb P	--
24-Mar-18	IN	Eight Infrastructure Industries	Feb	6.7%
27-Mar-18	US	Conf. Board Consumer Confidence	Mar	130.8
28-Mar-18	US	GDP Annualized QoQ	4Q T	2.5%
28-Mar-18	IN	Fiscal Deficit INR Crore	Feb	55,610
29-Mar-18	UK	GDP QoQ	4Q F	0.4%
29-Mar-18	UK	GDP YoY	4Q F	1.4%
29-Mar-18	US	Initial Jobless Claims	24-Mar	--
29-Mar-18	US	U. of Mich. Sentiment	Mar F	--
29-Mar-18	JN	Jobless Rate	Feb	2.4%
29-Mar-18	JN	Industrial Production MoM	Feb P	--
2-Apr-18	US	ISM Manufacturing	Mar	60.8
2-Apr-18	IN	Nikkei India PMI Mfg	Mar	52.1
3-Apr-18	AU	RBA Cash Rate Target	3-Apr	--
3-Apr-18	HK	Retail Sales Value YoY	Feb	4.1%
3-Apr-18	AU	Building Approvals MoM	Feb	17.1%
4-Apr-18	US	Durable Goods Orders	Feb F	--
5-Apr-18	US	Initial Jobless Claims	31-Mar	--
5-Apr-18	IN	RBI Repurchase Rate	5-Apr	6.0%
5-Apr-18	IN	RBI Reverse Repo Rate	5-Apr	5.8%
5-Apr-18	IN	RBI Cash Reserve Ratio	5-Apr	4.0%
6-Apr-18	US	Change in Nonfarm Payrolls	Mar	--
8-Apr-18	JN	BoP Current Account Balance	Feb	--

Institutional Equity Research

MARKET LENS

NIFTY 10427 IN FOCUS

March 14, 2018

Support	10380	Stock in Focus	AJANTA PHARMA
	10320	Positional Pick	GODREJIND
Resistance	10480	Intraday Pick	BALKRISIND
	10520	Intraday Pick	HINDUNILVR

Corporate Actions

Ex-Dividend

Company Name	Ex-Date	Purpose
Indian Oil Corporation Limited	15-Mar-18	Bonus 1:1
NBCC (India) Limited	15-Mar-18	Interim Dividend - Re 0.55 Per Share (Purpose Revised)
Coal India Limited	16-Mar-18	Interim Dividend Rs 16.50 Per Share (Purpose And Date Revised)
Engineers India Limited	19-Mar-18	Interim Dividend
Colgate Palmolive (India) Limited	20-Mar-18	Interim Dividend
Kewal Kiran Clothing Limited	20-Mar-18	Interim Dividend - Rs 5 Per Share
Vedanta Limited	20-Mar-18	Interim Dividend
India Nippon Electricals Limited	21-Mar-18	Face Value Split (Sub-Division) - From Rs 10/- Per Share To Rs 5/- Per Share
Indian Energy Exchange Limited	21-Mar-18	Interim Dividend
Coromandel International Limited	22-Mar-18	Interim Dividend
La Opala RG Limited	22-Mar-18	Bonus 1:1
Sun TV Network Limited	22-Mar-18	Interim Dividend
Sundaram Clayton Limited	22-Mar-18	Interim Dividend
The United Nilgiri Tea Estates Company Limited	23-Mar-18	Interim Dividend
KIOCL Limited	26-Mar-18	Interim Dividend
NLC India Limited	26-Mar-18	Interim Dividend
CRISIL Limited	27-Mar-18	Annual General Meeting/ Dividend - Rs 10 Per Share
GAIL (India) Limited	27-Mar-18	Bonus 1:3
Vesuvius India Limited	2-Apr-18	Dividend - Rs 6.75 Per Share
Ambuja Cements Limited	5-Apr-18	Dividend - Rs 2 Per Share
Linde India Limited	6-Apr-18	Annual General Meeting/ Dividend - Re 1 Per Share
KSB Pumps Limited	12-Apr-18	Annual General Meeting/ Dividend - Rs 6 Per Share
Castrol India Limited	25-Apr-18	Annual General Meeting/Dividend - Rs 2.50 Per Share
Sanofi India Limited	26-Apr-18	Annual General Meeting/ Dividend - Rs 53 Per Share
ABB India Limited	27-Apr-18	Annual General Meeting/ Dividend - Rs 4.40 Per Share

Institutional Equity Research

MARKET LENS

NIFTY 10427 IN FOCUS

March 14, 2018

Support	10380	Stock in Focus	AJANTA PHARMA
	10320	Positional Pick	GODREJIND
Resistance	10480	Intraday Pick	BALKRISIND
	10520	Intraday Pick	HINDUNILVR

Guided Allocation Towards Research Products

	Product Allocation (%)	Max. Allocation in 1 stock (%)	Number of Calls	Frequency	Call Duration
Trading Products					
Intraday	30	25-30	3-4 stocks	Daily	Daily
Positional Calls/weekly calls/BTST	30	15-20	6-7 stocks	Weekly	Fortnightly
TradEdge	15	25-50	2 stocks	Fortnightly	Monthly
Option Strategies	15	10-20	2 stocks	Weekly	Weekly
Cash	10				
Total	100				

	Product Allocation (%)	Max. Allocation in 1 stock (%)	Number of Calls	Frequency	Call Duration
Investment Products					
Rsec Model Portfolio	25	10	8-10 stocks	Monthly	Half Yearly
Stock In Focus	25	5	1 stock	Daily	Quarterly
Fundamental Calls	25	5	10	Quarterly	Yearly
Initiating Coverage	20	10		As and When	Yearly
Cash	5				
Total	100				

Institutional Equity Research

MARKET LENS

NIFTY 10427 IN FOCUS

March 14, 2018

Support	10380	Stock in Focus	AJANTA PHARMA
	10320	Positional Pick	GODREJIND
Resistance	10480	Intraday Pick	BALKRISIND
	10520	Intraday Pick	HINDUNILVR

Reliance Securities Limited (RSL), the broking arm of Reliance Capital is one of the India's leading retail broking houses. Reliance Capital is amongst India's leading and most valuable financial services companies in the private sector. Reliance Capital has interests in asset management and mutual funds, life and general insurance, commercial finance, equities and commodities broking, wealth management services, distribution of financial products, private equity, asset reconstruction, proprietary investments and other activities in financial services. The list of associates of RSL is available on the website www.reliancecapital.co.in. RSL is registered as a Research Analyst under SEBI (Research Analyst) Regulations, 2014

General Disclaimers: This Research Report (hereinafter called 'Report') is prepared and distributed by RSL for information purposes only. The recommendations, if any, made herein are expression of views and/or opinions and should not be deemed or construed to be neither advice for the purpose of purchase or sale of any security, derivatives or any other security through RSL nor any solicitation or offering of any investment /trading opportunity on behalf of the issuer(s) of the respective security(ies) referred to herein. These information / opinions / views are not meant to serve as a professional investment guide for the readers. No action is solicited based upon the information provided herein. Recipients of this Report should rely on information/data arising out of their own investigations. Readers are advised to seek independent professional advice and arrive at an informed trading/investment decision before executing any trades or making any investments. This Report has been prepared on the basis of publicly available information, internally developed data and other sources believed by RSL to be reliable. RSL or its directors, employees, affiliates or representatives do not assume any responsibility for, or warrant the accuracy, completeness, adequacy and reliability of such information / opinions / views. While due care has been taken to ensure that the disclosures and opinions given are fair and reasonable, none of the directors, employees, affiliates or representatives of RSL shall be liable for any direct, indirect, special, incidental, consequential, punitive or exemplary damages, including lost profits arising in any way whatsoever from the information / opinions / views contained in this Report.

Risks: Trading and investment in securities are subject to market risks. There are no assurances or guarantees that the objectives of any of trading / investment in securities will be achieved. The trades/ investments referred to herein may not be suitable to all categories of traders/investors. The names of securities mentioned herein do not in any manner indicate their prospects or returns. The value of securities referred to herein may be adversely affected by the performance or otherwise of the respective issuer companies, changes in the market conditions, micro and macro factors and forces affecting capital markets like interest rate risk, credit risk, liquidity risk and reinvestment risk. Derivative products may also be affected by various risks including but not limited to counter party risk, market risk, valuation risk, liquidity risk and other risks. Besides the price of the underlying asset, volatility, tenor and interest rates may affect the pricing of derivatives.

Disclaimers in respect of jurisdiction: The possession, circulation and/or distribution of this Report may be restricted or regulated in certain jurisdictions by appropriate laws. No action has been or will be taken by RSL in any jurisdiction (other than India), where any action for such purpose(s) is required. Accordingly, this Report shall not be possessed, circulated and/or distributed in any such country or jurisdiction unless such action is in compliance with all applicable laws and regulations of such country or jurisdiction. RSL requires such recipient to inform himself about and to observe any restrictions at his own expense, without any liability to RSL. Any dispute arising out of this Report shall be subject to the exclusive jurisdiction of the Courts in India.

Disclosure of Interest: The research analysts who have prepared this Report hereby certify that the views /opinions expressed in this Report are their personal independent views/opinions in respect of the securities and their respective issuers. None of RSL, research analysts, or their relatives had any known direct /indirect material conflict of interest including any long/short position(s) in any specific security on which views/opinions have been made in this Report, during its preparation. RSL's Associates may have other potential/material conflict of interest with respect to any recommendation and related information and opinions at the time of publication of research report. RSL, its Associates, the research analysts, or their relatives might have financial interest in the issuer company(ies) of the said securities. RSL or its Associates may have received a compensation from the said issuer company(ies) in last 12 months for the brokerage or non brokerage services. RSL, its Associates, the research analysts or their relatives have not received any compensation or other benefits directly or indirectly from the said issuer company(ies) or any third party in last 12 months in any respect whatsoever for preparation of this report.

The research analysts has served as an officer, director or employee of the said issuer company(ies)?: No

RSL, its Associates, the research analysts or their relatives holds ownership of 1% or more, in respect of the said issuer company(ies)?: No

Copyright: The copyright in this Report belongs exclusively to RSL. This Report shall only be read by those persons to whom it has been delivered. No reprinting, reproduction, copying, distribution of this Report in any manner whatsoever, in whole or in part, is permitted without the prior express written consent of RSL.

RSL's activities were neither suspended nor have defaulted with any stock exchange with whom RSL is registered. Further, there does not exist any material adverse order/judgments/strictures assessed by any regulatory, government or public authority or agency or any law enforcing agency in last three years. Further, there does not exist any material enquiry of whatsoever nature instituted or pending against RSL as on the date of this Report.

Important These disclaimers, risks and other disclosures must be read in conjunction with the information / opinions / views of which they form part of.

RSL CIN: U65990MH2005PLC154052. SEBI registration no. (Stock Brokers: NSE - INB / INF / INE 231234833; BSE - INB / INF / INE 011234839, Depository Participants: CDSL IN-DP-257-2016 IN-DP-NSDL-363-2013, Research Analyst: INH000002384); AMFI ARN No.29889.