

**REGD. OFFICE :**

REMI HOUSE, PLOT NO.11 CAMA INDL.  
ESTATE, WALBHAT ROAD, GOREGAON (E),  
MUMBAI - 400 063. INDIA

TEL.: +91 - 22 - 4058 9888 / 2685 1998

FAX : +91 - 22 - 2685 2335 / 2685 3868

E-MAIL : rmi\_igrd@remigroup.com

WEBSITE : www.remigroup.com

CIN : L28920MH1970PLC014746

# **REMI EDELSTAHL TUBULARS LIMITED**

November 10, 2025

**The General Manager – Dept. Corporate Services,  
BSE Limited,  
P J Towers, Dalal Street,  
Mumbai – 400 001  
Scrip Code:513043**

## **Sub.: Earnings Presentation**

Pursuant to Regulation 30 and 46 of SEBI (Listing Obligations and Disclosure Requirements) Regulations, 2015, please find enclosed herewith the earnings presentation on the Unaudited Financial Results of the Company for the quarter ended September 30, 2025.

Thanking you ,

**For Remi Edelstahl Tubulars Limited**

**H H. Joshi  
Company Secretary &  
Compliance Officer**  
Encl :a/a





**REMI EDELSTAHL  
TUBULARS LTD.**

**Q2 & H1 FY2026**  
**Investor Presentation**



# DISCLAIMER

REMI

This presentation and the accompanying slides (the “Presentation”), which have been prepared by Remi Edelstahl tubulars Ltd. (REMI, The Company) solely for information purposes and do not constitute any offer, recommendation or invitation to purchase or subscribe for any securities and shall not form the basis or be relied on in connection with any contract or binding commitment what so ever. No offering of securities of the Company will be made except by means of a statutory offering document containing detailed information about the Company.

This Presentation has been prepared by the Company based on information and data which the Company considers reliable, but the Company makes no representation or warranty, express or implied, whatsoever, and no reliance shall be placed on, the truth, accuracy, completeness, fairness and reasonableness of the contents of this Presentation. This Presentation may not be all inclusive and may not contain all of the information that you may consider material. Any liability in respect of the contents of, or any omission from, this Presentation is expressly excluded.

Certain matters discussed in this Presentation may contain statements regarding the Company’s market opportunity and business prospects that are individually and collectively forward-looking statements. Such forward-looking statements are not guarantee of future performance and are subject to known and unknown risks, uncertainties and assumptions that are difficult to predict.

These risks and uncertainties include, but are not limited to, the performance of the Indian economy and of the economies of various international markets, the performance of the industry in India and world-wide, competition, the company’s ability to successfully implement its strategy, the Company’s future levels of growth and expansion, technological implementation, changes and advancements, changes in revenue, income or cash flows, the Company’s market preferences and its exposure to market risks, as well as other risks.

The Company’s actual results, levels of activity, performance or achievements could differ materially and adversely from results expressed in or implied by this Presentation. The Company assumes no obligation to update any forward-looking information contained in this Presentation. Any forward-looking statements and projections made by third parties included in this Presentation are not adopted by the Company and the Company is not responsible for such third party statements and projections.



# COMPANY OVERVIEW

**REMI Edelstahl Tubulars Ltd. (RETL)** is India's pioneer stainless steel pipes and tubes manufacturer. Established in 1970, RETL has evolved into a trusted supplier for critical industries such as oil & gas, petrochemicals, power generation and many more.



**5 decades**  
of experience



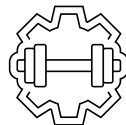
**300+ employees**  
from various fields such as  
mechanical engineering,  
metallurgy, accounting, etc



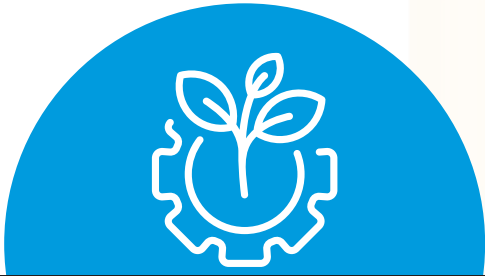
**100+ customers**  
from oil & gas, thermal &  
nuclear power, defence,  
aerospace sectors



**₹ 138.52 Crores**  
Revenue



**12,000 mt**  
Annual installed  
capacity



## Manufacturing & Capacity

- Centralized manufacturing facility located in Tarapur, Maharashtra.
- Total area: 51,000 sq. meters.
- State-of-the-art infrastructure.
- Product range includes seamless and welded pipes.
- Supports diverse industrial applications.

## Quality & Approvals

- REMI specializes in high-quality stainless steel pipes and tubes.
- Emphasis on durability and reliability.
- Advanced manufacturing processes and strict quality control systems.
- Holds key certifications: ISO 9000, 14000, 45000, PED, etc.
- Approved by major consultants and EPC contractors.

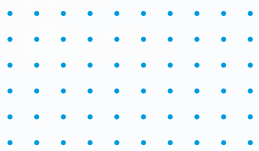
## Sustainability & Innovation

- RETL showcases strong environmental commitment through renewable energy use.
- Windmills installed at Dhule (Maharashtra) supply over 50% of total power needs.
- Overall power consumption reduced by 5% over the last 2 years.
- 100% of the water used is treated for domestic re-use, making our facility a zero liquid discharge (ZLD) plant.
- 5,000 sq. m of storage space converted into green area, expanding total garden area to 10,000 sq. m.





# TIMELINE & DEVELOPMENTS



**1972**

Started operations

**1977**

Technical licensing agreement with M/s Kobe Steel (Japan)

**1992**

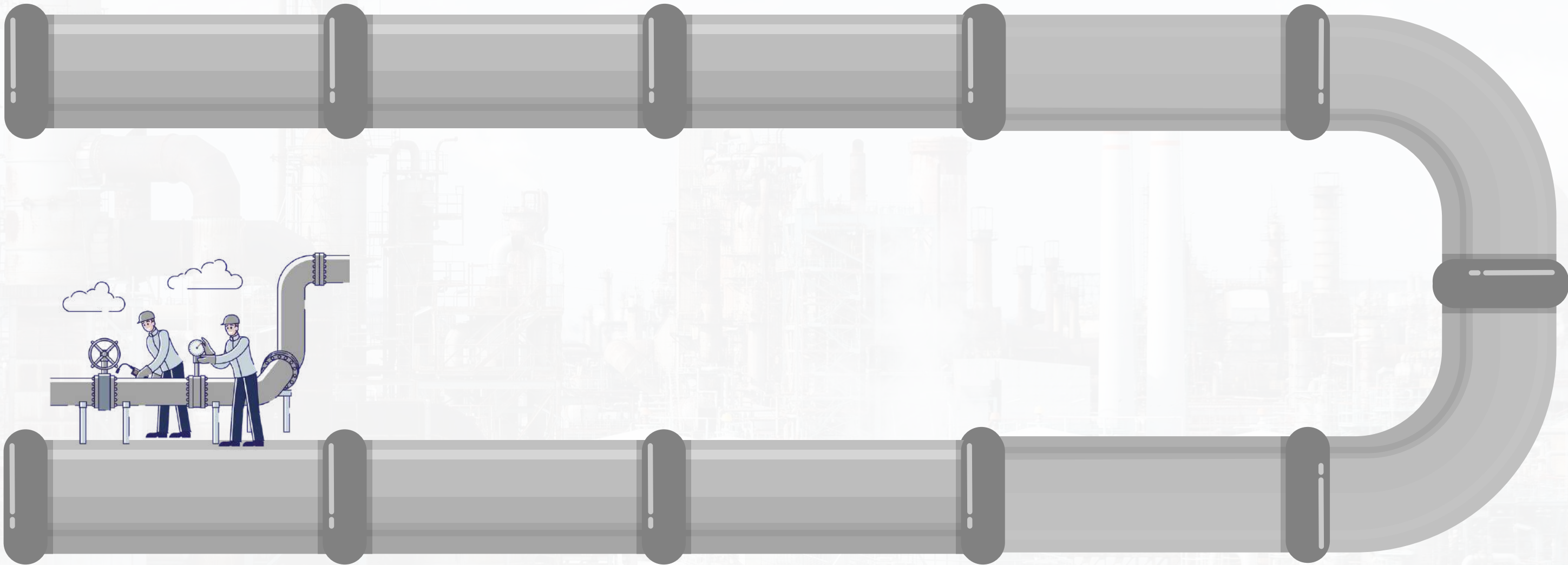
Listed on the Bombay Stock Exchange.

**1995**

Expanded capacity by shifting manufacturing facility to Tarapur.

**2002**

Installation of wind mill at Dhule for renewable power generation.



**2025**

Forayed into manufacturing of tubes for food, dairy and pharma industries, in partnership with WSG Co. Ltd (South Korea)

**2024**

- Manufactured a 70mm thick welded pipe – first time in India.
- Developed welded tubes in coiled form.

**2016**

Supplied special grade critical tubing to a nuclear power plant.

**2010**

Completed first supply to ISRO.

**2005**

Setup installed for manufacturing of tubes for thermal power plants.





## SS Welded pipes

- Large diameter pipes
- High thick pipes

### Applications:

- Oil & gas
- Water treatment
- Fertilizer

### Specifications & size range:

- ASTM A-358, A-778, A-928
  - OD: 8" to 80" NB
  - THK: 3 to 70 mm
- ASTM A-312
  - OD: ½" to 32" NB
  - THK: 1.6 to 10 mm



## SS Welded tubes

### Applications:

- Power generation in thermal & nuclear power plants
- HVAC
- Chemicals
- Food, dairy & pharmaceuticals

Full range of value-added U Bend / Shaped tubes



## SS cold drawn seamless tubes

### Applications:

- Power generation in thermal & nuclear power plants
- Aerospace & defence
- Oil & gas

### Specifications & size range:

- ASTM A-213, A-268, A-269, A-789
  - OD: 6 to 76mm
  - THK: 0.8 to 10mm

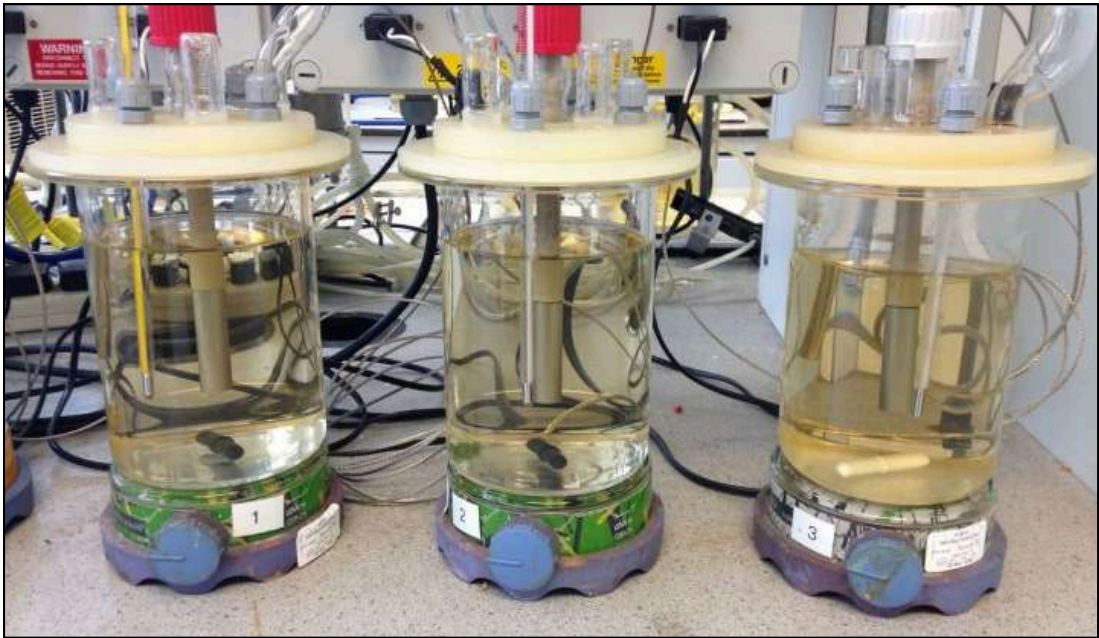
Full range of value-added U Bend / Shaped tubes

## New Launch of Niche Products (first time in India).

- Mechanical & Electropolish Welded and Seamless S.S. tubes for ultra-high purity (UHP) application.



# QUALITY CONTROL AND CERTIFICATIONS



## Certifications & Accreditations

- ISO 900, 14001, 45001
- PED 2014/68/EU
- AD 2000-Merkblatt W 0
- NORSOK M650
- Bureau of Indian Standards (BIS)
- Indian Register of Shipping

## Quality Control Facilities & Equipment

- **Chemical testing** – Spectrometer, corrosion test, etc.
- **Mechanical testing** – Tensile, impact, bend, flaring and flattening, etc.
- **Non-destructive testing** – Ultrasonic, Eddy current, hydrotest, radiography, air under water, etc.

## Third-Party Approvals

- **Major consultants, EPC contractors** - EIL, BHEL, NTPC, NPCIL, Toyo, L&T and many more
- **Defence and aerospace** – ISRO, Hindustan, Cochin, Goa and other shipyards.
- **International refineries** – ADNOC, KNPC, KOC





# CLIENTELE DYNAMICS

REMI

## GEOGRAPHICAL PRESENCE





# INDUSTRIES



## THERMAL POWER

This industry requires high performance materials like stainless steel pipes and tubes for high temperature steam applications

### Opportunities

India plans to add 20GW of new thermal power capacity by 2027. This expansion could require around 6-7 million tons of steel for boilers, turbines, and structural components.



## NUCLEAR POWER

Stainless steel pipes and tubes are required for critical nuclear island control systems and components

### Opportunities

New specialty chemicals production facilities are expected to drive the need for high-grade and specialised steel.



## OIL & GAS (ONSHORE & OFF SHORE)

Stainless steel pipes and tubes are needed in the oil & gas industry to deal with complex crude oil processing.

### Opportunities

Indiaplans to add 15,000 km of natural gas pipelines by 2025, requiring approximately 3 million tons of steel for pipeline construction.



## WATER TREATMENT PLANTS AND EPC COMPANIES

Stainless steel finds application in water treatment infrastructure and projects undertaken by EPC (Engineering Procurement, and Construction) Companies.

### Opportunities

The EPC sector in water management is projected to grow at a CAGR of 10-12%, with major projects like the Namami Gange program demanding over 1 million tons of steel by 2025.



## AEROSPACE AND DEFENCE

Stainless steel is used in these sectors due to its strength and ability to withstand harsh conditions.

### Opportunities

The construction of five fleet support ships at HSL in Vishakhapatnam, with an overall cost of approximately ₹19,000 crore, creates a significant opportunity for steel pipe manufacturing companies.



## PETROCHEMICAL

Stainless steel can withstand exposure to harsh chemicals and maintain its structural integrity, making it a reliable choice for transporting hazardous material.

### Opportunities

New specialty chemicals production facilities are expected to drive the need for high-grade and specialised steel.



## FOOD & BEVERAGES

Stainless steel pipes withstand high temperatures, pressure variations, and chemical exposure, making them ideal for pasteurization, fermentation, and distillation.

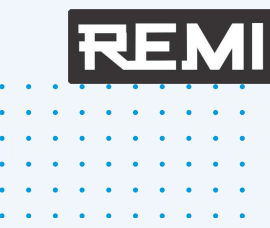
### Opportunities

India's food processing sector is expanding rapidly, supported by government initiatives like Make in India and PLI schemes.



# REMI – WSG STRATEGIC PARTNERSHIP

REMI will acquire WSG's patented core technologies and full mass production system for the following products:



1

Ultra-high purity (UHP) tube products for the applications of semiconductor, OLED, microelectronics, elective vehicle slurry transfer system and biotechnology.

2

High-purity Mechanical polished tubes (MP) tube products for semiconductors, biotechnology and food and beverages industries as well as electric vehicle industries.

3

High-purity bright annealed (BA) tube products for semiconductors, biotechnology and life sciences industries.

4

Titanium welded tubes for power generation geared toward sharply rising demand from nuclear and data center power usage.

5

Coil drawn high precision tube products for semiconductors, life sciences, oil and gas and linear motion controls.





# KEY FEATURES OF THE PARTNERSHIP



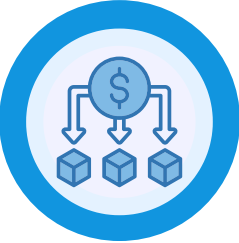
**Make in India for the world**  
Increased global reach of REMI products through WSG’s network.



**Low capex cost**  
Utilisation and upgradation of existing plant infrastructure for expansion.



**Low gestation period**  
Less than six months’ time between agreement signing and machinery installation.



**Diversification**  
Partnership helps REMI diversify into a new segment of consumer products, expanding from our existing range of industrial products



## FOOD & BEVERAGES

High quality SS tubes are required in the processing of various food & dairy products



## SEMI CONDUCTOR

UHP SS tubes are required for transportation & use of UHP gases & chemicals for the cleaning,manufacture and packing of wafers & chips.



## ELECTRIC VEHICLES

For slurry, transfer and battery.

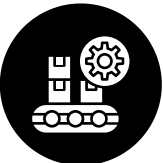


## PHARMACEUTICALS & LIFE SCIENCE

High quality SS tubes are required in the process of critical pharmaceuticals products

REMI

## PROJECT TIMELINE



**Machinery installation**  
Q3



**First product trials in presence of WSG technical team**  
Q4



**Commercial production**  
Q1 FY26-27

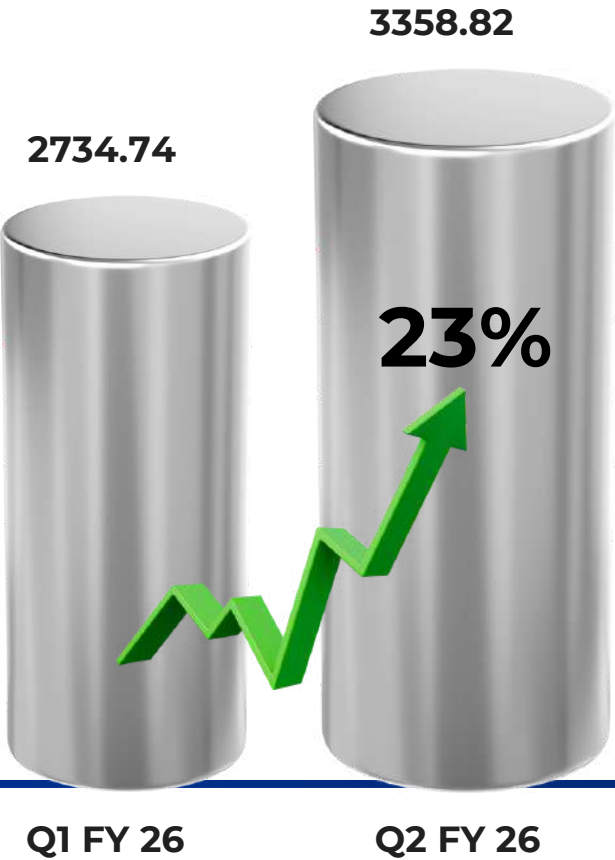


KEY FINANCIALS SNAPSHOT

REMI

PARTICULARS	Q2 FY26	Q2 FY25	YoY(%)	Q1 FY26	QoQ(%)	H1 FY26	H1 FY25	YoY%
Total Income	3358.82	3207.67	5%	2734.74	23%	6093.56	5511.03	11%
EBITDA	261.73	253.64	3%	144.83	81%	406.56	391.28	4%
Profit before Tax(PBT)	140.43	140.9	0%	27.62	408%	168.05	166.79	1%
Profit after Tax(PAT)	103.14	125.83	-18%	21.07	390%	124.21	145.48	-15%
Cash PAT	218.31	224.7	-3%	110.83	97%	329.14	334.11	-1%

Total Income



EBITDA



PAT





# MANUFACTURING FACILITY



## Location:

Plot No. N-211/1, M.I.D.C. Tarapur, Boisar, District Palghar, Maharashtra – 401506

## Facility Size:

Total Area – 51,000 sq. meters  
Production Capacity:  
Installed Capacity: 12,000 MT

## Certifications:

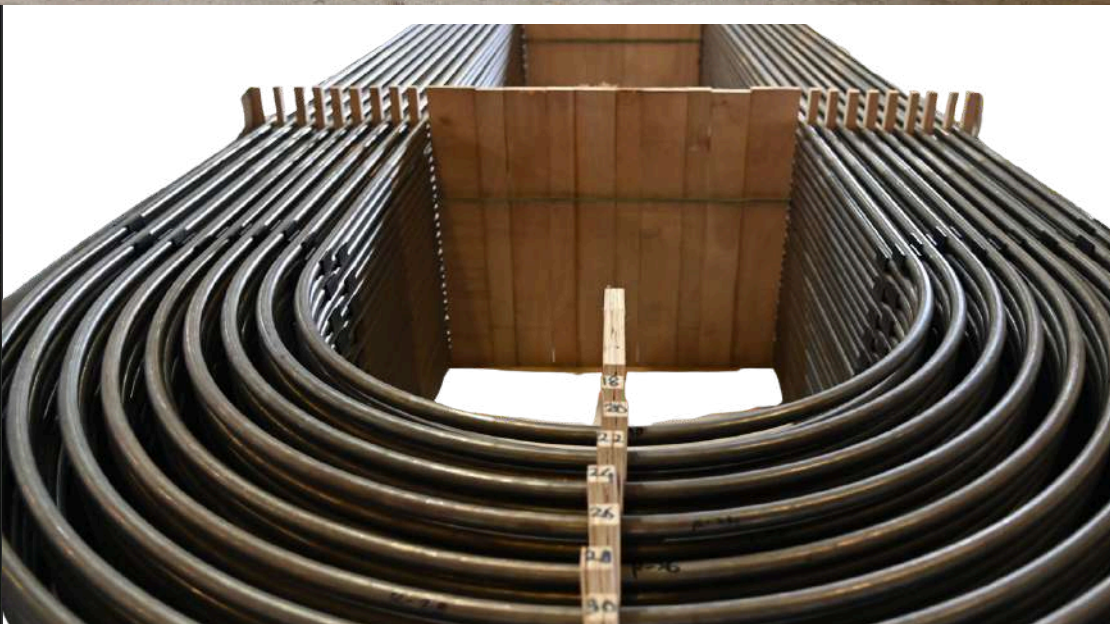
ISO 9001, ISO 14001, ISO 45001 – Ensuring quality, environmental responsibility, and occupational health & safety

## Technology Infrastructure:

Equipped with advanced manufacturing systems including CNC machinery and process automation for enhanced precision and efficiency

## Product Portfolio:

Manufacturing high-quality Stainless Steel Pipes & Tubes – both Seamless and Welded







# THANK YOU



**REMI**

