

May 12, 2025

**The Manager - Listing**  
**National Stock Exchange of India Limited**  
**(Scrip Symbol: PVRINOX)**

**The Manager – Listing**  
**BSE Limited**  
**(Scrip Code: 532689)**

**Sub: 4<sup>th</sup> Quarter & FY 2024-25 - Investor Presentation**

Dear Sir/Madam,

Please find attached presentation on Investor update for the Fourth Quarter & Financial Year ended 31<sup>st</sup> March, 2025.

This is for your information and to all concerned.

Kindly take the same on record.

Thanking You.

Yours sincerely,  
For **PVR INOX Limited**

**Murlee Manohar Jain**  
**SVP - Company Secretary**  
**& Compliance Officer**

Encl: A/a



**PVR INOX**

MAY 12<sup>th</sup>, 2025

**INVESTOR UPDATE**  
**Q4 & 12M FY'25**

This presentation has been prepared for general information purposes in respect of PVR INOX Limited (“Company”) together with its subsidiaries and joint venture (together, with the “Company”, the “Group”) only, without regard to any specific objectives, suitability, financial situations and needs of any particular person and does not constitute any recommendation or form part of any offer or invitation, directly or indirectly, in any manner, or inducement to sell or issue, or any solicitation of any offer to purchase or subscribe for, any securities of the Company in any jurisdiction, nor shall it or any part of it or the fact of its distribution form the basis of, or be relied on in connection with, any contract or commitment therefor. This presentation does not solicit any action based on the material contained herein. Nothing in this presentation is intended by the Group to be construed as legal, accounting or tax advice.

This presentation has not been approved and will not or may not be reviewed or approved by any statutory or regulatory authority in India or by any Stock Exchange in India.

This presentation contains certain forward-looking statements relating to the business, financial performance, strategy and results of the Group and/ or the industry in which it operates. Forward-looking statements are statements concerning future circumstances and results, and any other statements that are not historical facts, sometimes identified by the words including, without limitation “believes”, “expects”, “predicts”, “intends”, “projects”, “plans”, “estimates”, “aims”, “foresees”, “anticipates”, “targets”, and similar expressions. The forward-looking statements, including those cited from third party sources, contained in this presentation are based on numerous assumptions and are uncertain and subject to risks. A multitude of factors including, but not limited to, changes in demand, competition and technology, can cause actual events, performance or results to differ significantly from any anticipated development. Neither the Group nor its affiliates or advisors or representatives nor any of its or their parent or subsidiary undertakings or any such person's officers or employees guarantees that the assumptions underlying such forward-looking statements are free from errors nor does either accept any responsibility for the future accuracy of the forward-looking statements contained in this presentation or the actual occurrence of the forecasted developments. Forward-looking statements speak only as of the date of this presentation and are not guarantees of future performance. As a result, the Group expressly disclaims any obligation or undertaking to release any update or revisions to any forward-looking statements in this presentation as a result of any change in expectations or any change in events, conditions, assumptions or circumstances on which these forward looking statements are based. Given these uncertainties and other factors, viewers of this presentation are cautioned not to place undue reliance on these forward-looking statements. Certain numbers in these presentations and materials have been subject to routine rounding off and accordingly figures shown as total in tables and diagrams may not be an arithmetic aggregation of the figures that precede them.

The information contained in these presentations and materials are only current as of the dates specified herein and have not been independently verified. None of the Group, its directors, promoters or affiliates, nor any of its or their respective employees, advisers or representatives or any other person accepts any responsibility or liability whatsoever, whether arising in tort, contract or otherwise, for any errors, omissions or inaccuracies in such information or opinions or for any loss, cost or damage suffered or incurred howsoever arising, directly or indirectly, from any use of this presentation or its contents or otherwise in connection with this presentation, and makes no representation or warranty, express or implied, for the contents of this presentation including its accuracy, fairness, completeness or verification or for any other statement made or purported to be made by any of them, or on behalf of them, and nothing in this presentation or at this presentation shall be relied upon as a promise or representation in this respect, whether as to the past or the future. Past performance is not a guide for future performance. The information contained in this presentation is current, and if not stated otherwise, made as of the date of this presentation. The Group undertakes no obligation to update or revise any information in this presentation as a result of new information, future events or otherwise. Any person/ party intending to provide finance/ invest in the shares/ businesses of the Group shall do so after seeking their own professional advice and after carrying out their own due diligence procedure to ensure that they are making an informed decision.

This presentation is not a prospectus, a statement in lieu of a prospectus, an offering circular, an advertisement or an offer document under the Companies Act, 2013, as amended, the Securities and Exchange Board of India (Issue of Capital and Disclosure Requirements) Regulations, 2018, as amended, or any other applicable law in India.

This presentation is strictly confidential and may not be copied or disseminated, reproduced, re-circulated, re-distributed, published or advertised in any media, website or otherwise, in whole or in part, and in any manner or for any purpose. Any unauthorized use, disclosure or public dissemination of information contained herein is prohibited. No person is authorized to give any information or to make any representation not contained in or inconsistent with this presentation and if given or made, such information or representation must not be relied upon as having been authorized by any person. Failure to comply with this restriction may constitute a violation of the applicable securities laws. Accordingly, any persons in possession of the aforesaid should inform themselves about and observe any such restrictions. By reviewing this presentation, you agree to be bound by the foregoing limitations. You may not repackage or sell the presentation. Information contained in a presentation hosted or promoted by the Group is provided “as is” without warranty of any kind, either expressed or implied, including any warranty of fitness for a particular purpose.

By accessing this presentation, you accept this disclaimer and any claims arising out of or in connection with this presentation shall be governed by the laws of India and only the courts in Gurugram, India, and no other courts shall have jurisdiction over the same.

<b>Particulars</b>	<b>Slide No.</b>
<b>Key Highlights</b>	<b>5</b>
<b>Box Office Performance</b>	<b>7</b>
<b>Result Summary</b>	<b>11</b>
<b>Update on Key Strategic Initiatives</b>	<b>17</b>
<b>Screen Growth Update</b>	<b>23</b>
<b>Content Lineup</b>	<b>25</b>

# Key Financial Highlights

(INR Mn)	TOTAL INCOME	EBITDA & EBITDA%	PAT & PAT%
Q4, FY'25	12,853	250 1.9%	-1,058 -8.2%
Q4, FY'24	12,904	352 2.7%	-901 -7.0%
12M, FY'25	58,746	4,703 8.0%	-1,519 -2.6%
12M, FY'24	62,037	8,087 13.0%	1,143 1.8%

Note: Above financial numbers are after excluding the impact of Ind AS 116 - 'Leases'

# Key Operating Highlights

	ADMITS (Mn)	ATP (INR)	SPH (INR)
Q4, FY'25	30.5	258	125
Q4, FY'24	32.6	233	129
	-6.3%	+10.5%	-3.5%
12M, FY'25	136.9	259	134
12M, FY'24	151.4	259	132
	-9.5%	0.0%	+1.5%

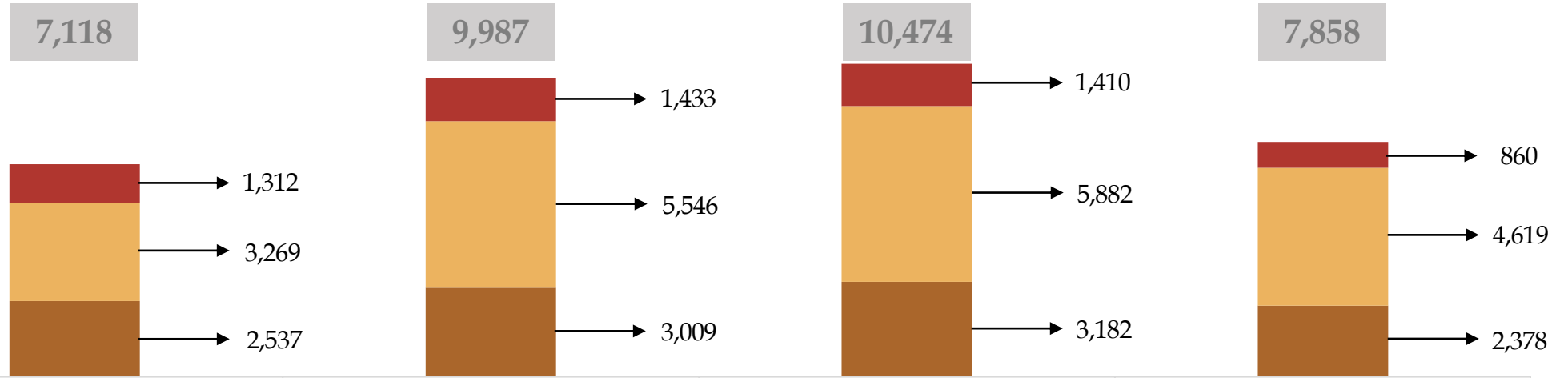
# BOX OFFICE UPDATE



# Box Office Performance in FY'25 Reflects Uneven Content Supply

## PVR INOX GBOC (INR Mn)

- ★ ENGLISH
- ★ HINDI + HINDI DUBBED
- ★ REGIONAL



## ADMITS (Mn)

Q1 FY'25

30.4

Q2 FY'25

38.8

Q3 FY'25

37.3

Q4 FY'25

30.5



**KALKI 2898 AD**  
(HINDI/TELOGU)  
842 MN



**MUNJYA**  
(HINDI)  
457 MN



**GODZILLA x KONG: THE NEW EMPIRE**  
(ENGLISH)  
385 MN



**STREE 2**  
(HINDI)  
2,785 MN



**KALKI 2898 AD**  
(HINDI/TELOGU)  
1,345 MN



**DEADPOOL AND WOLVERINE**  
(ENGLISH)  
863 MN



**PUSHPA 2**  
(HINDI/TELOGU)  
3,211 MN



**BHOOL BHULAIYA 3**  
(HINDI)  
1,094 MN



**SINGHAM AGAIN**  
(HINDI)  
1,068 MN



**CHAAVA**  
(HINDI)  
2,280 MN



**SKY FORCE**  
(HINDI)  
578 MN

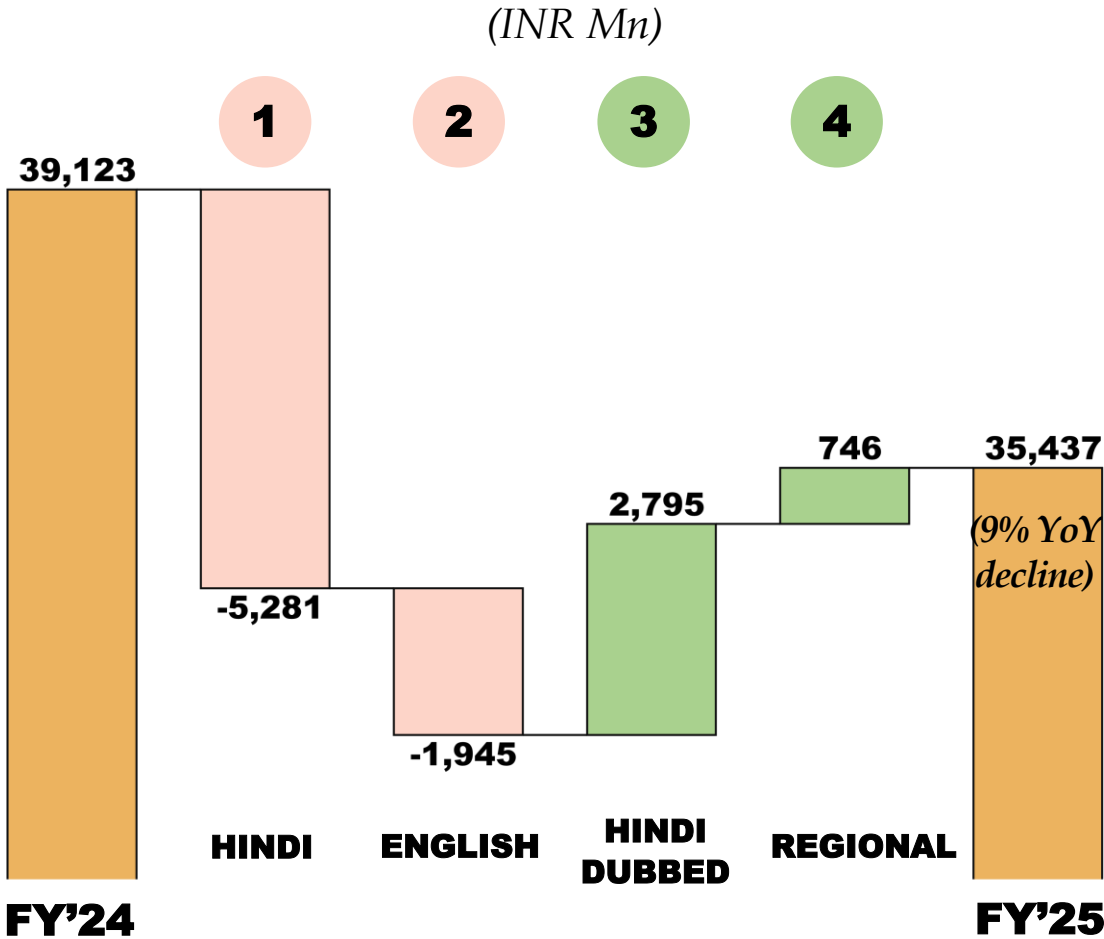


**MUFASA: THE LION KING**  
(ENGLISH)  
271 MN

## TOP 3 MOVIES IN THE QUARTER\*

# Muted Bollywood & Hollywood Releases Impacted Overall GBOC

## PVR INOX GBOC



Note: Chart not to scale

### 1 Hindi Box Office Declined by 26% due to:

- 14% drop in number of Bollywood titles
- Lack of Superstar movies
- Postponement of release dates

### 2 English Box Office Declined by 28% due to:

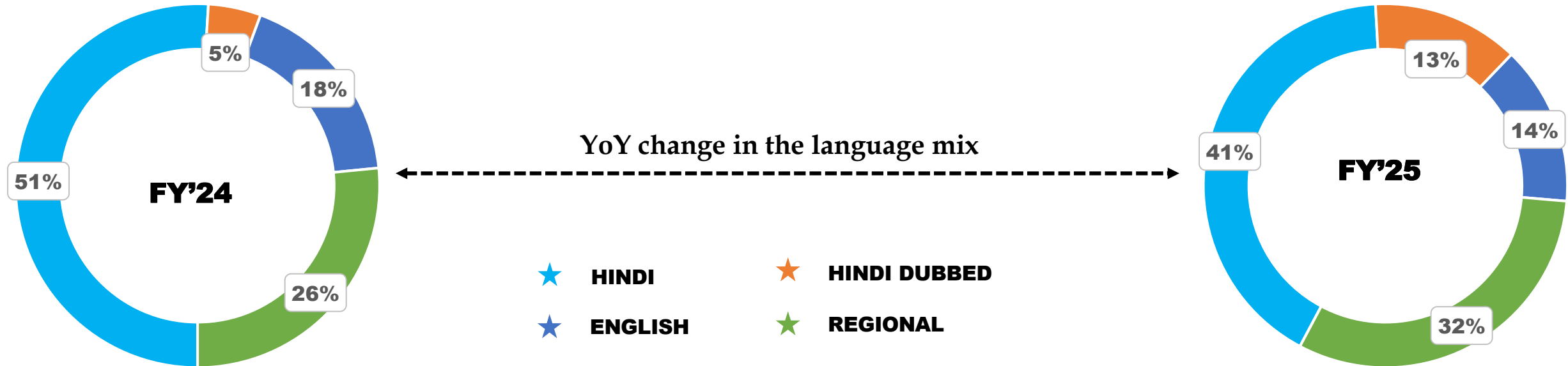
- Lingering impact of 2023-24 Hollywood strike resulting in 6% drop in number of English releases
- Lack of Tentpoles

### 3 Hindi Dubbed Box Office Surged by 153%

- 'Pushpa 2' and 'Kalki' emerged as Pan India hits
- Indicates evolved consumer choices

### 4 Regional Box Office witnessed a 7% increase

**Both Hindi & English Movies are expected to make a Strong Comeback in FY'26**



- **Hindi Box Office** share dropped from 51% to 41%. **Hindi Dubbed** increased from 5% to 13%
- **English Box Office** share dropped from 18% to 14%
- **Regional Box Office** share jumped from 26% to 32%

# Result Summary (Consolidated) – Q4, FY'25 vs Q4, FY'24

Particulars (INR Mn)	Q4, FY'25			Q4, FY'24		
	Reported	Ind-AS 116 Impact	Ind-AS 116 Adjusted	Reported	Ind-AS 116 Impact	Ind-AS 116 Adjusted
Total Income	13,112	259	12,853	13,055	151	12,904
Expenses	9,667	-2,936	12,603	9,780	-2,772	12,552
<b>EBITDA</b>	<b>3,445</b>	<b>3,195</b>	<b>250</b>	<b>3,275</b>	<b>2,923</b>	<b>352</b>
<b>EBITDA Margin</b>	<b>26.3%</b>		<b>1.9%</b>	<b>25.1%</b>		<b>2.7%</b>
Depreciation & Amortization	3,161	1,949	1,212	3,028	1,906	1,122
<b>EBIT</b>	<b>284</b>	<b>1,246</b>	<b>-962</b>	<b>247</b>	<b>1,017</b>	<b>-770</b>
Finance Costs	1,959	1,506	453	1,999	1,546	453
<b>PBT</b>	<b>-1,677</b>	<b>-260</b>	<b>-1,417</b>	<b>-1,752</b>	<b>-529</b>	<b>-1,223</b>
Corporate Tax	-424	-65	-359	-455	-133	-322
<b>PAT</b>	<b>-1,253</b>	<b>-195</b>	<b>-1,058</b>	<b>-1,297</b>	<b>-396</b>	<b>-901</b>
<b>PAT Margin</b>	<b>-9.6%</b>		<b>-8.2%</b>	<b>-9.9%</b>		<b>-7.0%</b>
EPS - Basic (INR)	-12.73		-10.75	-13.21		-9.18
EPS - Diluted (INR)	-12.73		-10.75	-13.21		-9.18

# Result Summary (Consolidated) – 12M, FY'25 vs 12M, FY'24

Particulars (INR Mn)	12M, FY'25			12M, FY'24		
	Reported	Ind-AS 116 Impact	Ind-AS 116 Adjusted	Reported	Ind-AS 116 Impact	Ind-AS 116 Adjusted
Total Income	59,536	790	58,746	62,637	600	62,037
Expenses	42,383	-11,660	54,043	42,970	-10,980	53,950
<b>EBITDA</b>	<b>17,153</b>	<b>12,450</b>	<b>4,703</b>	<b>19,667</b>	<b>11,580</b>	<b>8,087</b>
<b>EBITDA Margin</b>	<b>28.8%</b>		<b>8.0%</b>	<b>31.4%</b>		<b>13.0%</b>
Depreciation & Amortization	12,798	7,962	4,836	12,193	7,486	4,707
<b>EBIT</b>	<b>4,355</b>	<b>4,488</b>	<b>-133</b>	<b>7,474</b>	<b>4,094</b>	<b>3,380</b>
Finance Costs	8,095	6,212	1,883	7,913	6,059	1,854
<b>PBT</b>	<b>-3,743</b>	<b>-1,724</b>	<b>-2,019</b>	<b>-439</b>	<b>-1,965</b>	<b>1,526</b>
Corporate Tax	-934	-434	-500	-112	-495	383
<b>PAT</b>	<b>-2,809</b>	<b>-1,290</b>	<b>-1,519</b>	<b>-327</b>	<b>-1,470</b>	<b>1,143</b>
<b>PAT Margin</b>	<b>-4.7%</b>		<b>-2.6%</b>	<b>-0.5%</b>		<b>1.8%</b>
EPS - Basic (INR)	-28.48		-15.40	-3.26		11.41
EPS - Diluted (INR)	-28.48		-15.40	-3.26		11.34

# Key Operating Numbers

Particulars	Units	Q4, FY'25			Q4, FY'24			12M, FY'25			12M, FY'24		
		Reported (A)	Reported (B)	YoY Change (%) (A/B-1)	Reported (A)	Reported (B)	YoY Change (%) (A/B-1)	Reported (A)	Reported (B)	YoY Change (%) (A/B-1)	Reported (A)	Reported (B)	YoY Change (%) (A/B-1)
<b><u>Operating Numbers</u></b>													
Cinema Count (at the end of period) <sup>(1)</sup>		349	359	-2.8%	349	359	-2.8%	349	359	-2.8%	349	359	-2.8%
Screen Count (at the end of period) <sup>(1)</sup>		1,723	1,718	0.3%	1,723	1,718	0.3%	1,723	1,718	0.3%	1,723	1,718	0.3%
Weighted Average Screens <sup>(2)</sup>		1,688	1,674	0.8%	1,688	1,674	0.8%	1,701	1,668	1.9%	1,701	1,668	1.9%
Admits	Mn	30.5	32.6	-6.3%	30.5	32.6	-6.3%	136.9	151.4	-9.5%	136.9	151.4	-9.5%
Occupancy	%	20.5%	22.6%	-208 bps	20.5%	22.6%	-208 bps	23.0%	25.6%	-261 bps	23.0%	25.6%	-261 bps
Avg. Ticket Price (ATP)	INR	258	233	10.5%	258	233	10.5%	259	259	0.0%	259	259	0.0%
F&B Spend per Head (SPH)	INR	125	129	-3.5%	125	129	-3.5%	134	132	1.5%	134	132	1.5%

(1) Includes 42 management screens across 12 cinemas which are managed under a 'Management fee' model. The above table excludes Operating KPIs of management properties

(2) Weighted average screens has been calculated basis the actual no. of days of operations of each cinema during the period, excluding 42 management screens across 12 cinemas

# Revenue Analysis

Particulars (INR Mn)	Q4, FY'25			Q4, FY'24		
	Reported (A)	Reported (B)	YoY Change (%) (A/B-1)	Reported (A)	Reported (B)	YoY Change (%) (A/B-1)
Weighted Average Screens <sup>(1)</sup>	1,688	1,674	0.8%	1,701	1,668	1.9%
<b>Financials</b>						
Sale of Movie Tickets	6,447	6,353	1.5%	29,549	32,799	-9.9%
Sale of Food & Beverages	3,811	4,132	-7.8%	18,270	19,584	-6.7%
Advertisement Income	962	1,045	-7.9%	4,475	4,519	-1.0%
Convenience Fees	442	437	1.1%	2,111	2,181	-3.2%
Other Operating Income	836	597	40.0%	3,394	1,988	70.7%
Other Income	355	340	4.4%	947	966	-2.0%
<b>Total Income</b>	<b>12,853</b>	<b>12,904</b>	<b>-0.4%</b>	<b>58,746</b>	<b>62,037</b>	<b>-5.3%</b>

Consolidated Financials

(1) Weighted average screens has been calculated basis the actual no. of days of operations of each cinema during the period, excluding 42 management screens across 12 cinemas

(2) Increase in Other operating income is due to increase on account of 'Income from Film Distribution from INR 397 mn in Q4 FY'24 to INR 548 mn in Q4 FY'25 for distributing 'SkyForce'

(3) Increase in Other operating income is due to increase on account of 'Income from Film Distribution from INR 1,199 mn in FY'24 to INR 2,364 mn in FY'25 for distributing 'Singham Again', 'Stree 2', 'SkyForce' etc

# Fixed Expense Analysis – Comparable Cinemas

Particulars (INR Mn)	Q4, FY'25		Q4, FY'24		12M, FY'25		12M, FY'24	
Comparable Screens <sup>(1)</sup>	1,533		1,533	0%	1,433		1,433	0%
<b>Fixed Cost</b>								
Rent	2,825		2,765	2.2%	10,697		10,634	0.6%
CAM	821		779	5.4%	3,090		2,912	6.1%
<b>Rent + CAM</b>	3,646		3,544	2.9%	13,786		13,547	1.8%
Personnel	1,509		1,525	-1.0%	5,786		5,778	0.1%
Electricity & Water / Utilities	762		707	7.8%	3,416		3,391	0.7%
Other Expenses	1,722		1,833	-6.1%	6,284		6,381	-1.5%
<b>Other Fixed Costs</b>	3,993		4,065	-1.8%	15,485		15,551	-0.4%
<b>Total Fixed Expenses</b>	7,639		7,609	0.4%	29,271		29,097	0.6%

## Disciplined Control on Fixed Cost

(1) Comparable screens are screens which were fully operational in both the periods. Excludes Lanka

# Expense Analysis – Consolidated

Particulars (INR Mn)	Q4, FY'25		Q4, FY'24		12M, FY'25		12M, FY'24	
	Reported (A)	Reported (B)	YoY Change (%) (A/B-1)		Reported (A)	Reported (B)	YoY Change (%) (A/B-1)	
Weighted Average Screens <sup>(1)</sup>	1,688	1,674	0.8%		1,701	1,668	1.9%	
<b>Variable Cost</b>								
FHC (%)	42.6%	44.4%	-188 bps		44.6%	46.0%	-137 bps	
COGS (%)	25.1%	27.4%	-237 bps		24.9%	25.2%	-27 bps	
<b>Fixed Cost</b>								
Rent	3,076	2,993	2.8%		12,378	11,928	3.8%	
CAM	903	832	8.5%		3,632	3,296	10.2%	
Personnel	1,704	1,706	-0.1%		6,860	6,573	4.4%	
Electricity & Water / Utilities	836	758	10.3%		3,949	3,853	2.5%	
Other Expenses ex Movie Dist., Print	1,978	2,017	-1.9%		7,489	7,310	2.4%	
<b>Total Fixed Expenses ex Movie Dist.</b>	<b>8,497</b>	<b>8,306</b>	<b>2.3%</b>		<b>34,308</b>	<b>32,960</b>	<b>4.1%</b>	
Movie Dist., Print charges <sup>(2)</sup>	584	646	-9.6%		3,281	1,883	74.2%	
<b>Total Fixed Expenses incl. Movie Dist.</b>	<b>9,081</b>	<b>8,952</b>	<b>1.4%</b>		<b>37,589</b>	<b>34,843</b>	<b>7.9%</b>	

Consolidated Financials

(1) Weighted average screens has been calculated basis the actual no. of days of operations of each cinema during the period, excluding 42 management screens across 12 cinemas

(2) Expenses relating to Distribution of movies



# KEY STRATEGIC INITIATIVES

**1**

From  
Managing to  
Manufacturing  
Footfalls

**2**

Control  
Costs

**3**

Transition  
towards  
'Capital Light  
Growth  
Model'

**4**

Reduce  
Debt

# 1 From Managing to Manufacturing Footfalls

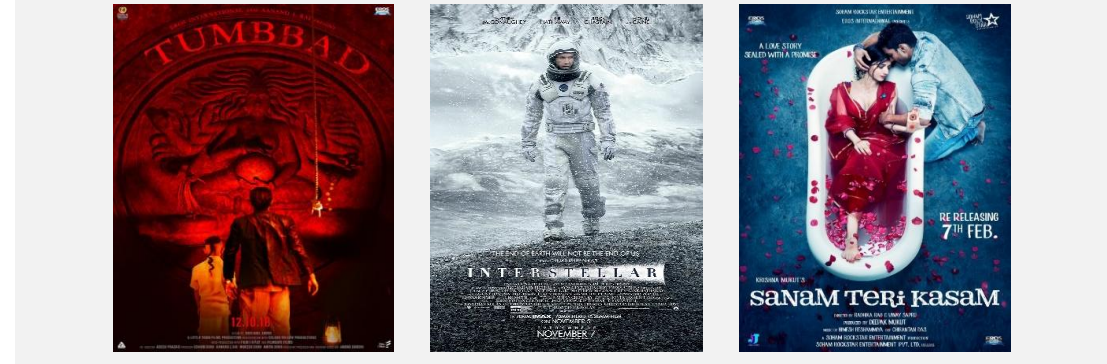


## RE-RELEASES

 **71 LAC +**  
ADMITS FY'25

 **1,240 MN**  
GBOC FY'25

## TOP 3 RE-RELEASES OF FY'25



## AFFORDABLE PRICING INITIATIVES

**34 LACS**  
ADMITS ACROSS 5  
CINEMA LOVERS /  
NATIONAL CINEMA DAYS





# 2 Relentless Cost Control

		FY'20	5 Year CAGR	FY'25
		<i>PVR + INOX Proforma</i>		<i>PVR + INOX</i>
<b>On per screen basis (INR mn)</b>				
<b>Fixed Costs</b> <i>(excluding Rent &amp; CAM)</i>	Weighted Average Screens <sup>(1)</sup>	1,371	4%	1,701
	Manpower Cost	5.5	-2%	5.0
	Total Headcount	24,285	-13% reduction over 5 years	21,035
	Total Headcount per screen	17.7	-30% reduction over 5 years	12.4
	Utilities (Electricity & Water)	2.3	0%	2.3
	Other Overheads	3.8	-2%	3.4
	<b>Fixed Cost<sup>(3)</sup> / Screen</b>	<b>11.7</b>	<b>-1.6%</b>	<b>10.8</b>
<b>Occupancy Cost</b>	Rent	6.2	3% <sup>(2)</sup>	7.3
	CAM	1.6	7% <sup>(2)</sup>	2.1
<b>Total Fixed Cost<sup>(3)</sup> / Screen</b>		<b>19.4</b>	<b>0.8%</b>	<b>20.2</b>

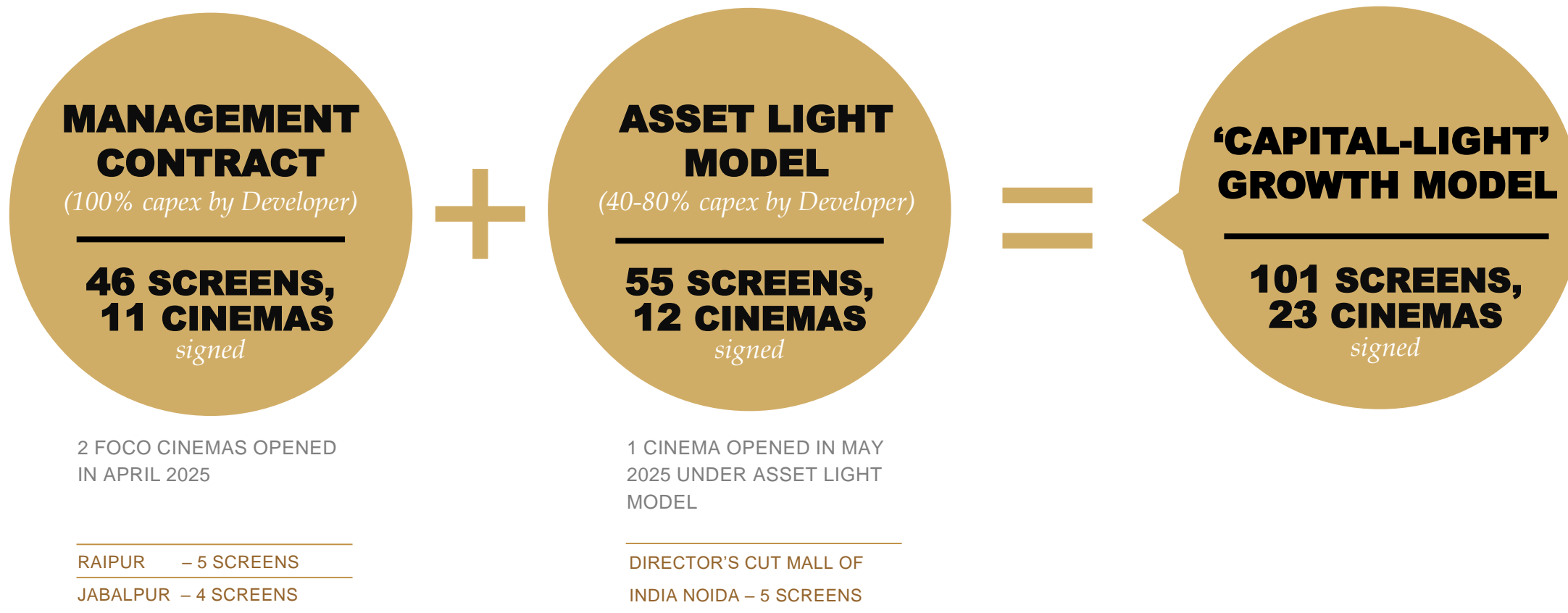
(1) Weighted average screens has been calculated basis the actual no. of days of operations of each cinema in an year.

(2) In line with contractual Rent & CAM escalation terms

(3) excluding Movie Distribution and Print charges

**Significant cost reduction measures resulted in near zero growth in fixed cost per screen over 5 years, despite of 29% growth in CPI Index**

# 3 Transition towards 'Capital Light' Growth Model

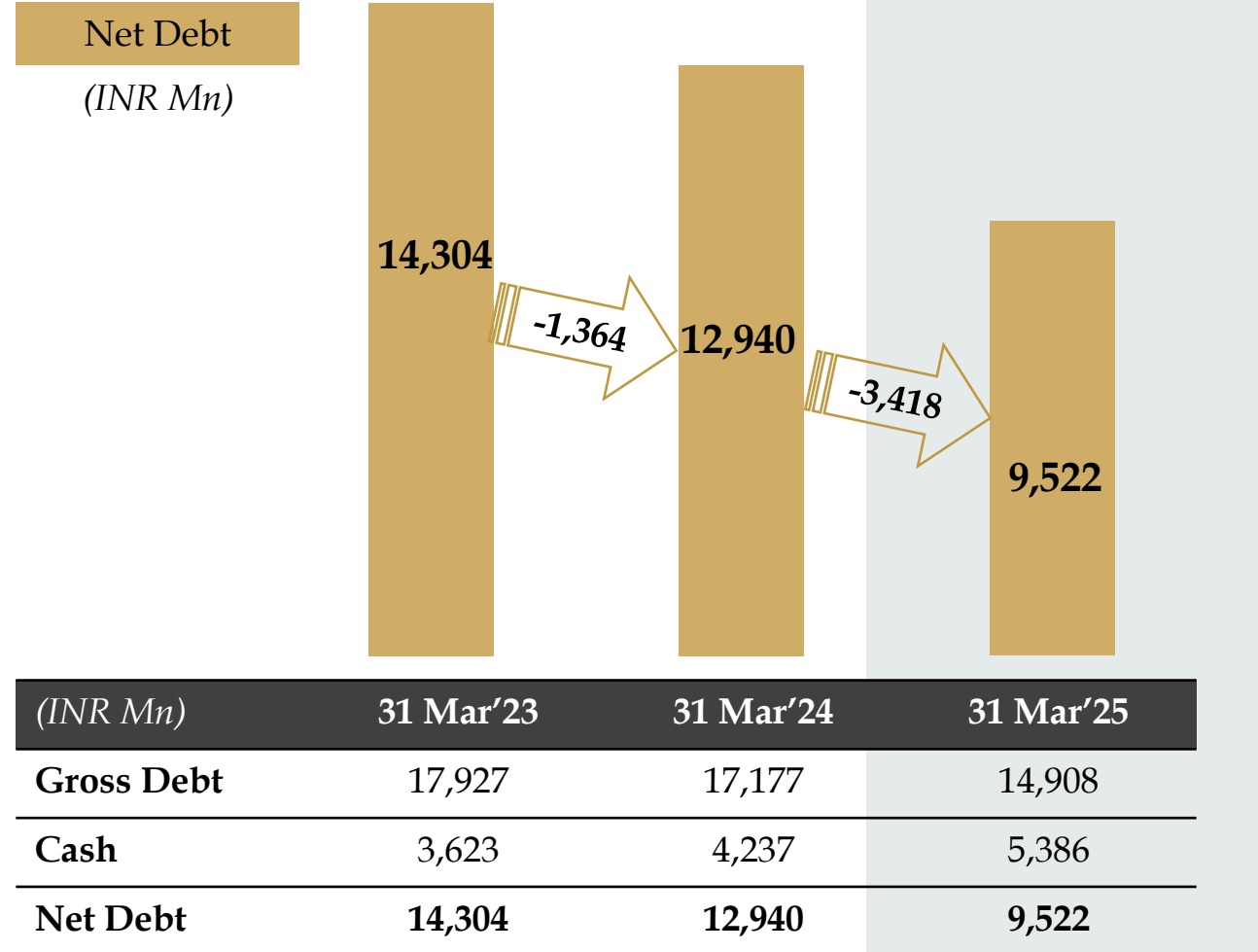


Majority of New Screen additions will be under the 'Capital Light' growth model

# 4 Strengthening the Balance Sheet & Consistent Debt Reduction

Particulars (INR Mn)	Consolidated	
	March 31, 2025	March 31, 2024
<b>Total Shareholder funds</b>	<b>70,534</b>	<b>73,232</b>
Equity Share Capital	982	981
Other Equity	69,533	72,254
Non-Controlling Interest	19	-3
<b>Total Debt</b>	<b>14,908</b>	<b>17,177</b>
Long Term Borrowings	9,198	10,474
Short Term Borrowings	5,710	6,703
Lease Liability	62,838	65,858
Other Non Current Liabilities	1,576	930
<b>Total Sources of Funds</b>	<b>1,49,856</b>	<b>1,57,197</b>
Net Fixed Assets Incl. CWIP	32,665	34,897
Goodwill	57,431	57,431
Right of Use assets (ROU)	49,923	54,917
Other Non Current Assets	11,698	11,010
Cash & Cash Equivalents <sup>(1)</sup>	5,386	4,237
Current Assets	5,521	5,712
Less: Current Liabilities	12,768	11,007
Net Current Assets	-7,247	-5,295
<b>Total Assets</b>	<b>1,49,856</b>	<b>1,57,197</b>

(1) Includes Investments, Other Bank balances and Bank deposits (under 'Other Financials Assets')



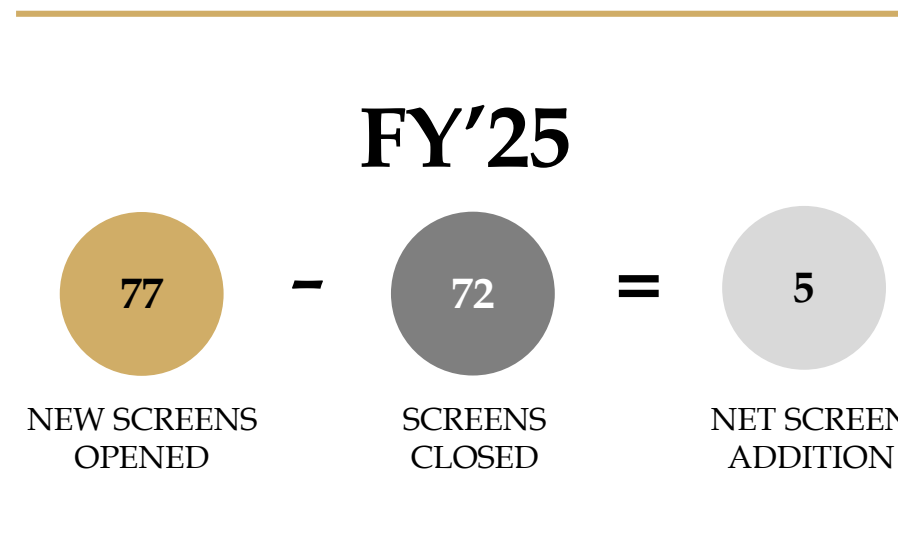
**Reduction in Net Debt Post Merger by INR 4,782 Mn**

## SCREENS OPENED

#	CINEMAS OPENED	OPENING DATE	SCREENS
1.	PVR FORUM MALL, KOCHI	10-APR-24	9
2.	INOX PHOENIX MARKET CITY, BENGALURU	11-APR-24	14
3.	PVR KOPA, KOREGAON PARK, PUNE	8-MAY-24	7
	PVR AMBIENCE GURGAON (EXPERIENCE ZONE) <sup>(1)</sup>	9-MAY-24	4
4.	INOX URBAN SQUARE UDAIPUR	30-MAY-24	6
5.	PVR MACHLIPATNAM, ANDHRA PRADESH	31-MAY-24	3
6.	PVR LIDO MUMBAI	31-MAY-24	3
7.	INOX PRISM, HYDERABAD	27-JUN-24	4
8.	PVR PALLADIUM, AHMEDABAD	1-AUG-24	9
9.	PVR PP MALL, MOHALI	6-SEP-24	7
10.	PVR ALVEAL, COIMBATORE	2-OCT-24	5
11.	PVR MALL OF DEHRADUN (PACIFIC)	13-DEC-24	6
<b>NEW SCREENS OPENED IN FY'25</b>			<b>77</b>

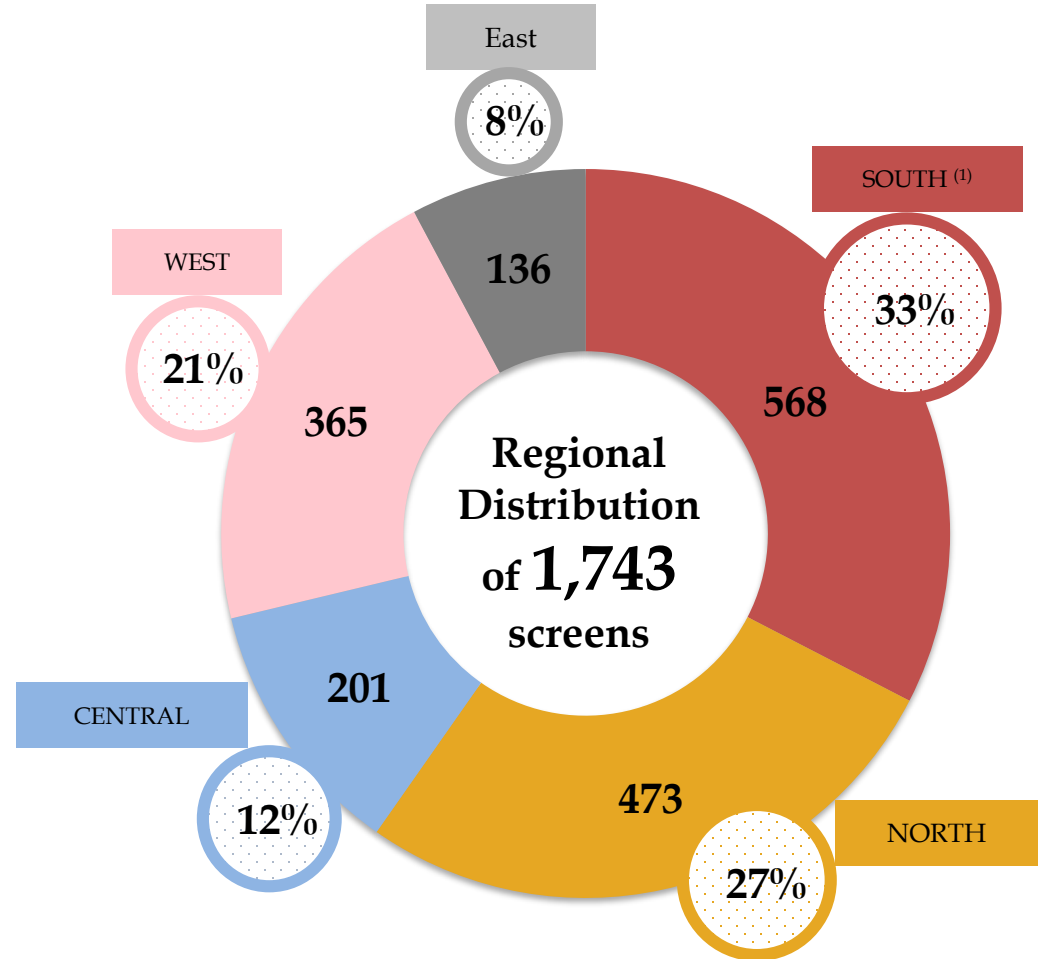
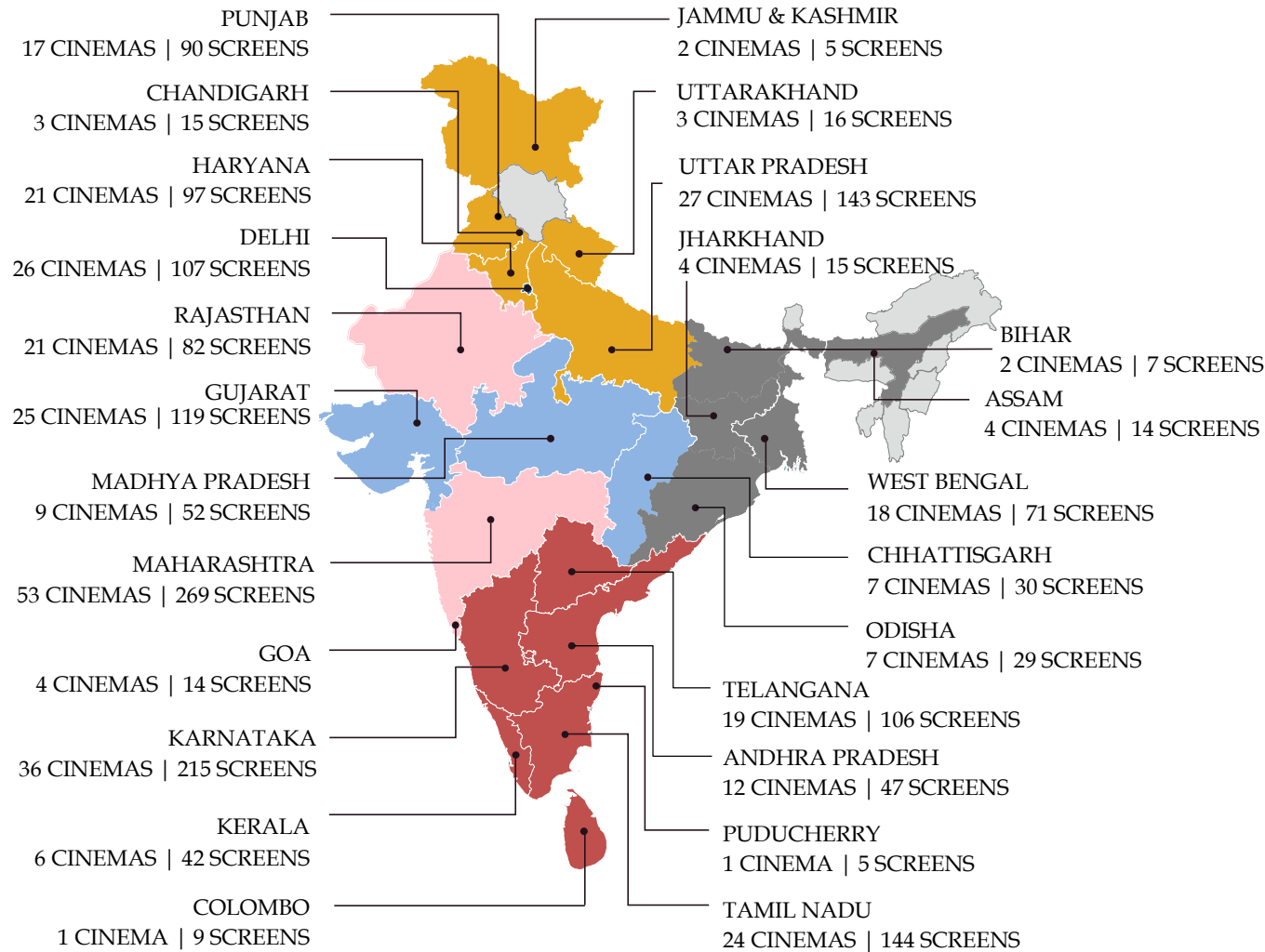
(1) 4 SCREENS WERE ADDED TO OUR EXISTING CINEMA IN AMBIENCE MALL, GURGAON

6 SCREENS AT ELAN MIRACLE, GURGAON WERE ADDED ON 25<sup>TH</sup> APRIL'25  
 5 SCREENS AT ZORA MALL, RAIPUR, WERE ADDED ON 25<sup>TH</sup> APRIL'25 - MANAGEMENT  
 4 SCREENS AT KA MALL, JABALPUR WERE ADDED ON 30<sup>TH</sup> APRIL'25 - MANAGEMENT  
 5 DC SCREENS AT, MALL OF INDIA, NOIDA WERE ADDED ON 2<sup>ND</sup> MAY'25 - ASSET LIGHT



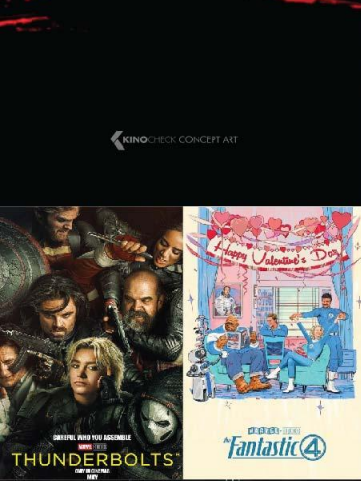
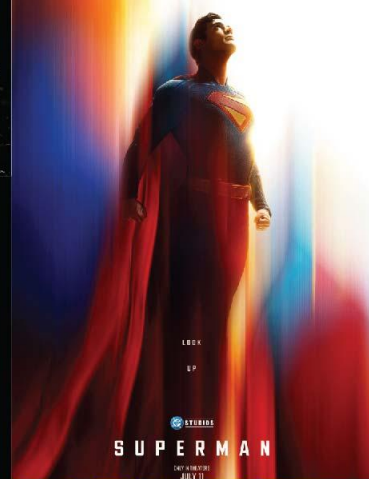
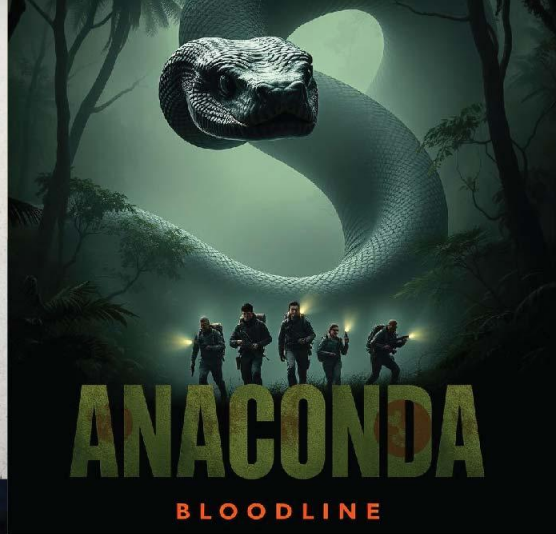
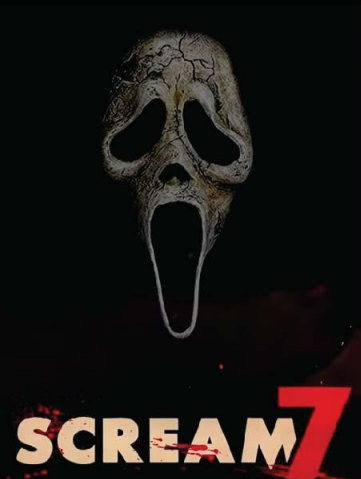
## Expect to open 100-110 New Screens in FY'26

# Diversified Screen Network of 1,743 Screens across 111 Cities

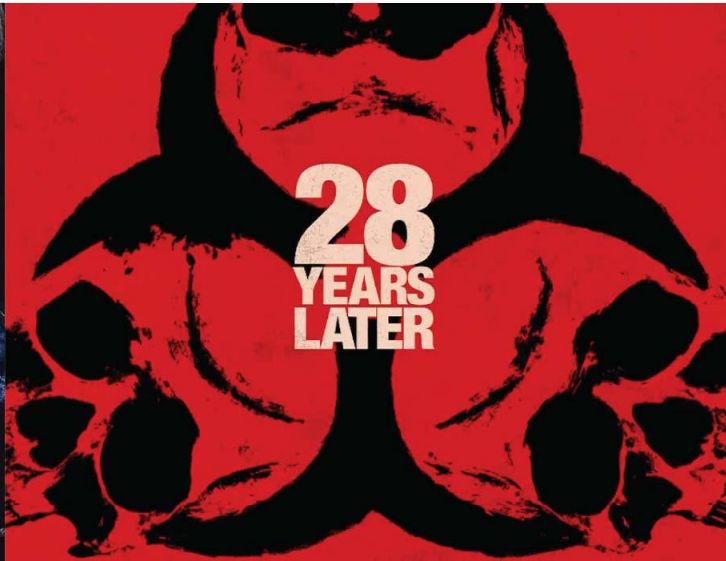
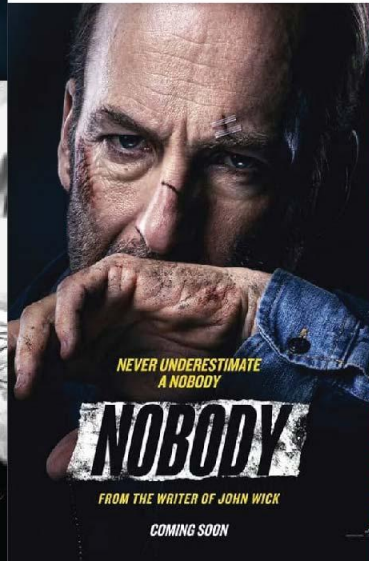
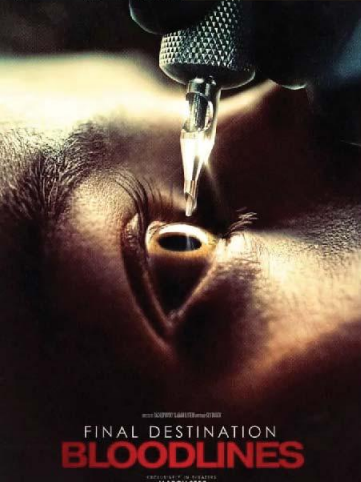
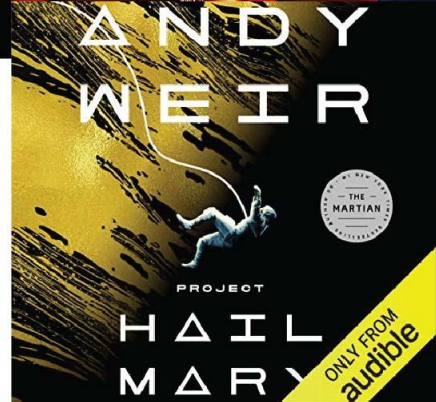


Note : Includes 14 Management Properties with 51 screens  
 Map not to scale, Screen Portfolio as on date

(1) South includes Sri Lanka



# CONTENT LINEUP





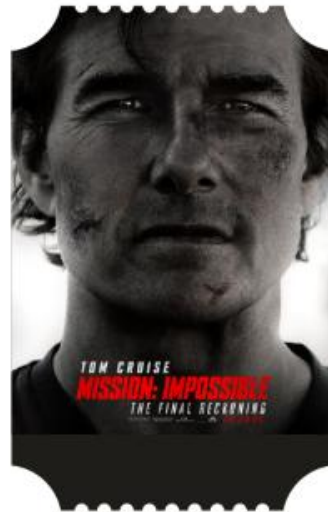
**FINAL DESTINATION : BLOODLINES IMAX**

**CAST**  
TONY TODD,  
BREC BASSINGER,  
RICHARD HARMON

**DIRECTOR**  
ZACH LIPOVSKY,  
ADAM STEIN

**ENGLISH**

**15<sup>TH</sup> MAY'2025**



**MISSION IMPOSSIBLE - THE FINAL RECKONING IMAX, 4DX, SCREEN-X**

**CAST**  
TOM CRUISE,  
REBECCA FERGUSON

**DIRECTOR**  
CHRISTOPHER  
MCQUARRIE

**ENGLISH**

**17<sup>TH</sup> MAY'2025**



**LILO & STICH**

**CAST**  
HANNAH  
WADDINGHAM,  
SYDNEY AGUDONG,  
BILLY MAGNUSSEN

**DIRECTOR**  
DEAN CAMP

**ENGLISH**

**23<sup>RD</sup> MAY'2025**



**KARATE KID : LEGENDS**

**CAST**  
JACKIE CHAN,  
RALPH MACCHIO

**DIRECTOR**  
JONATHAN  
ENTWISTLE

**ENGLISH**

**30<sup>TH</sup> MAY'2025**



**KINGDOM**

**CAST**  
VIJAY DEVERAKONDA,  
RUKMINI VASANTH,  
BHAGYASHRI BORSE

**DIRECTOR**  
GOWTAM TINNANURI

**TELUGU**

**30<sup>TH</sup> MAY'2025**



**THUG LIFE**

**CAST**  
KAMAL HAASAN,  
JAYAM RAVI,  
TRISHA KRISHNAN

**DIRECTOR**  
MANI RATNAM

**TAMIL**

**05<sup>TH</sup> JUN'2025**



**BALLERINA**

**CAST**  
KEANU REEVES,  
ANA DE ARAMAS,  
IAN MC SHANE

**DIRECTOR**  
LEN WISEMAN

**ENGLISH**

**06<sup>TH</sup> JUN'2025**



**HOUSEFULL 5**

**CAST**  
AKSHAY KUMAR,  
RITEISH DESHMUKH,  
SANJAY DUTT

**DIRECTOR**  
TARUN MANSUKHANI

**HINDI**

**06<sup>TH</sup> JUN'2025**



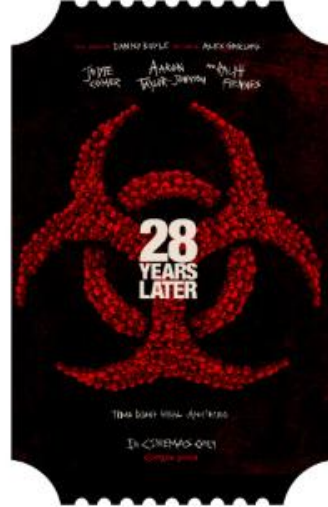
**HOW TO TRAIN YOUR DRAGON (LIVE ACTION)**  
**IMAX, 4DX, SCREEN-X**

**CAST**  
NICO PARKER,  
MASON THOMAS

**DIRECTOR**  
DEAN DEBLOIS

**ENGLISH**

**13TH JUN'2025**



**28 YEARS LATER**

**CAST**  
JODIE COMER,  
AARON TAYLOR  
JOHNSON,  
RALPH FIENNES

**DIRECTOR**  
DANNY BOYLE

**ENGLISH**

**20TH JUN'2025**



**KUBERAA**

**CAST**  
DHANUSH,  
NAGARJUNA,  
RASHMIKA,  
JIM SARBH

**DIRECTOR**  
SEKHAR KAMMULA

**TAMIL, TELUGU,  
HINDI,  
MALAYALAM,  
KANNADA**

**20TH JUN'2025**



**SITARE ZAMEEN PAR**

**CAST**  
AAMIR KHAN,  
DARSHEEL SAFARY

**DIRECTOR**  
R.S PRASANNA

**HINDI**

**20TH JUN'2025**



**MEGAN 2.0**

**CAST**  
ALLISON WILLIAMS,  
VIOLET MCGRAW,  
AMIE DONALD

**DIRECTOR**  
GERARD JOHNSTONE

**ENGLISH**

**27TH JUN'2025**



**FORMULA ONE IMAX**

**CAST**  
BRAD PITT,  
DAMSON IDRIS,  
KERRY CODON,  
TOBIAS MENZIES

**DIRECTOR**  
JOSEPH KOSINSKI

**ENGLISH**

**27TH JUN'2025**



**SARDAARJI 3**

**CAST**  
DILJIT DOSANJH,  
NEERU BAJWA,  
MANDY TAKHAR

**DIRECTOR**  
AMAR HUNDAL

**PUNJABI**

**27TH JUN'2025**



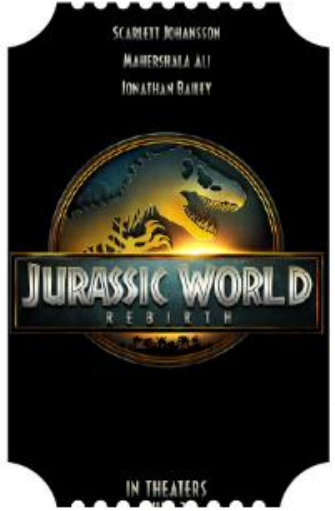
**KANNAPPA**

**CAST**  
MANCHU VISHNU,  
PRABHAS, MOHAN  
BABU, MADHOO,  
MOHANLAL

**DIRECTOR**  
MUKESH KUMAR  
SINGH

**TELUGU, HINDI ,  
TAMIL, KANNADA**

**27TH JUN'2025**



## JURASSIC WORLD REBIRTH

**CAST**  
SCARLETT JOHANSSON,  
MAHERSHALA ALI,  
JONATHAN BAILEY,  
RUPERT FRIEND

**DIRECTOR**  
GARETH EDWARDS

**ENGLISH**

**04TH JUL'2025**



## METRO IN DINO

**CAST**  
ADITYA ROY KAPOOR,  
SARA ALI KHAN, ALI  
FAZAL, FATIMA SANA  
SHAIKH, KONKONA  
SEN SHARMA,  
ANUPAM KHER

**DIRECTOR**  
ANURAG BASU

**HINDI**

**04TH JUL'2025**



## MAALIK

**CAST**  
RAJKUMMAR RAO,  
MEDHA SHANKR,  
MANUSHI CHILLAR

**DIRECTOR**  
PULKIT

**HINDI**

**11TH JUL'2025**



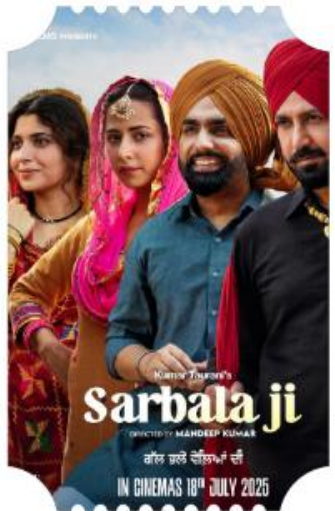
## SUPERMAN IMAX

**CAST**  
ISABELA MERCED,  
NICHOLAS HOULT,  
RACHEL  
BROSNAHAN

**DIRECTOR**  
JAMES GUNN

**ENGLISH**

**11TH JUL'2025**



## SARBALA JI

**CAST**  
GIPPY GREWAL,  
AMMI VIRK,  
SARGUN MEHTA,  
NIMRAT KHAIRA

**DIRECTOR**  
MANDEEP KUMAR

**PUNJABI**

**18TH JUL'2025**



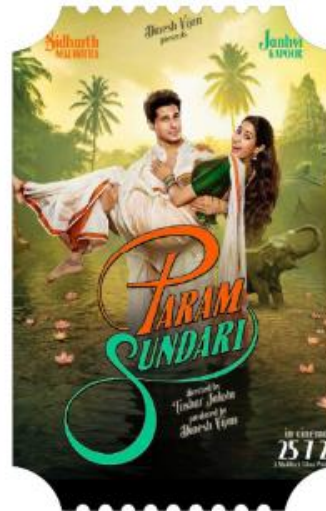
## FANTASTIC FOUR, THE FIRST STEPS IMAX

**CAST**  
VANESSA KIRBY,  
PEDRO PASCAL

**DIRECTOR**  
MATT SHAKMAN

**ENGLISH**

**25TH JUL'2025**



## PARAM SUNDARI

**CAST**  
SIDDHARTH  
MALHOTRA,  
JANVI KAPOOR

**DIRECTOR**  
TUSHAR JALOTA

**HINDI**

**25TH JUL'2025**



## SON OF SARDAR 2

**CAST**  
AJAY DEVGN

**DIRECTOR**  
VIJAY KUMAR ARORA

**HINDI**

**25TH JUL'2025**



## THE BAD GUYS 2

**CAST**  
ZAZIE BEETZ,  
SAM ROCKWELL,  
AWKWAFINA

**DIRECTOR**  
PIERRE PERIFEL

**ENGLISH**

**01<sup>ST</sup> AUG'2025**



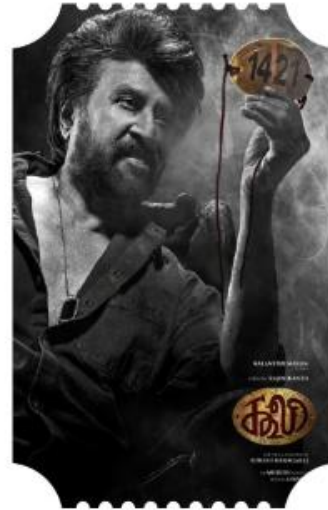
## THE DELHI FILES

**CAST**  
ANUPAM KHER,  
MITHUN  
CHAKRABORTY,  
PUNEET ISSAR

**DIRECTOR**  
VIVEK AGNIHOTRI

**HINDI**

**14<sup>TH</sup> AUG'2025**



## COOLIE

**CAST**  
RAJNIKANTH

**DIRECTOR**  
LOKESH KANAGARAJ

**TAMIL, KANNADA,  
TELUGU, HINDI**

**14<sup>ST</sup> AUG'2025**



## WAR 2

**CAST**  
HRITIK ROSHAN,  
JR NTR

**DIRECTOR**  
AYAN MUKERJI

**HINDI**

**14<sup>TH</sup> AUG'2025**



## THE CONJURING: LAST RITES - IMAX

**CAST**  
VERA FARMIGA,  
PATRICK WILSON

**DIRECTOR**  
MICHAEL CHAVES

**ENGLISH**

**05<sup>TH</sup> SEP'2025**



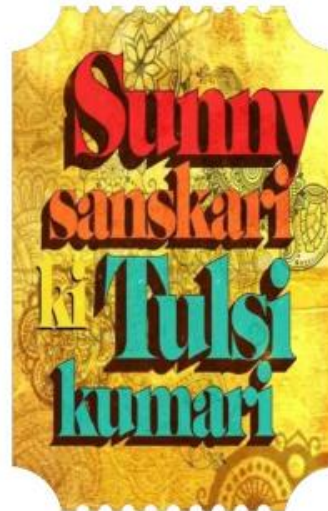
## BAAGHI 4

**CAST**  
TIGER SHROFF,  
SARA ALI KHAN

**DIRECTOR**  
AHMED KHAN

**HINDI**

**05<sup>TH</sup> SEP'2025**



## SUNNY SANSKARI KI TULSI KUMARI

**CAST**  
VARUN DHAVAN,  
JANHVI KAPOOR

**DIRECTOR**  
SHASHANK KHAITAN

**HINDI**

**12<sup>TH</sup> SEP'2025**



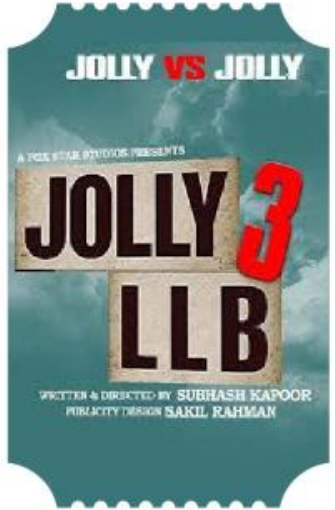
## NIKAA ZAILDAR 4

**CAST**  
AMMY VIRK,  
SONAM BAJWA

**DIRECTOR**  
SIMERJIT SINGH

**PUNJABI**

**12<sup>TH</sup> SEP'2025**



**JOLLY LLB 3**  
**CAST**  
 AKSHAY KUMAR,  
 ARSHAD WARSI,  
 HUMA QURESHI  
**DIRECTOR**  
 SUBHASH KAPOOR  
**HINDI**

**19<sup>TH</sup> SEP'2025**



**SAW XI**  
**CAST**  
 TOBIN BELL,  
 COSTAS MANDYLOR  
**DIRECTOR**  
 KEVIN GREUTERT  
**ENGLISH**

**26<sup>TH</sup> SEP'2025**



**IDLI KADAI**  
**CAST**  
 DHANUSH,  
 NITHYA MENON  
**DIRECTOR**  
 DHANUSH  
**TAMIL**

**01<sup>ST</sup> OCT'2025**



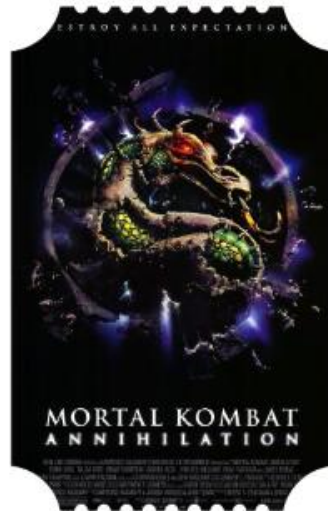
**KANTARA:  
 A LEGEND  
 CHAPTER 1**  
**CAST**  
 RISHAB SHETTY  
**DIRECTOR**  
 RISHAB SHETTY  
**KANNADA, TAMIL,  
 TELUGU, HINDI**

**02<sup>ND</sup> OCT'2025**



**TRON : ARES  
 - IMAX**  
**CAST**  
 JODIE TURNER  
 SMITH,  
 JEFF BRIDGES,  
 EVAN PETERS  
**DIRECTOR**  
 JOACHIM RØNNING  
**ENGLISH**

**10<sup>TH</sup> OCT'2025**



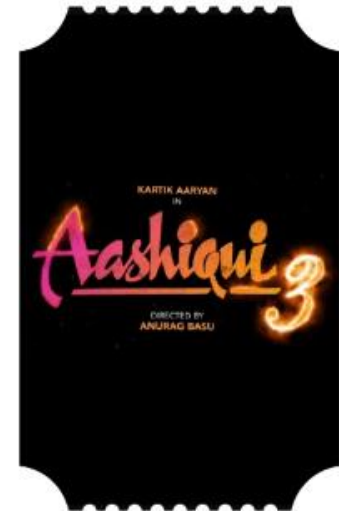
**MORTAL  
 KOMBAT 2 - IMAX**  
**CAST**  
 KARL URBAN,  
 HIROYUKI SANADA,  
 TADANOBU ASANO  
**DIRECTOR**  
 SIMON MCQUOID  
**ENGLISH**

**24<sup>TH</sup> OCT'2025**



**THAMA**  
**CAST**  
 AAYUSHMAN  
 KHURANA,  
 RASHMIKA  
 MANDANNA,  
 NAWAZUDDIN  
 SIDDIQUI  
**DIRECTOR**  
 ADITYA SARPOTDAR  
**HINDI**

**24<sup>TH</sup> OCT'2025**



**AASHIQUE 3**  
**CAST**  
 KARTIK AARYAN,  
 SREE LEELA  
**DIRECTOR**  
 ANURAG BASU  
**HINDI**

**24<sup>TH</sup> OCT'2025**



**THANK YOU**