



एन एम डी सी लिमिटेड NMDC Limited

(भारत सरकार का उद्यम) (A GOVT. OF INDIA ENTERPRISE)

पंजीकृत कार्यालय : 'खनिज भवन', 10-3-311/ए, कैसल हिल्स, मासाब टैंक, हैदराबाद - 500 028.
Regd. Office : 'Khanij Bhavan' 10-3-311/A, Castle Hills, Masab Tank, Hyderabad - 500 028.
नैगम पहचान संख्या / Corporate Identity Number : L13100TG1958 GOI 001674

No. 18(1)/2021- Sectt

12th August 2021

1) The BSE Limited Phiroze Jeejeebhoy Towers, Dalal Street, Mumbai- 400001	2) National Stock Exchange of India Ltd., Exchange Plaza, C-1, Block G, Bandra Kurla Complex, Bandra (E), Mumbai - 400 051
3) The Calcutta Stock Exchange Limited, 7, Lyons Range, Kolkata - 700001	

Dear Sir / Madam,

Sub: Investors Presentation on Company's Performance for the first quarter of FY 2021-22 - Reg

Ref: Regulation 30 of SEBI (Listing Obligations and Disclosure Requirements) Regulations, 2015; Security ID: NMDC

Reference the captioned subject, kindly note that Investors Presentation on Company's Performance for the first quarter of FY 2021-22 has been uploaded on NMDC website, a copy of which is enclosed herewith for kind reference.

Please take note of the above information.

Thanking you

Yours faithfully,
For NMDC Limited

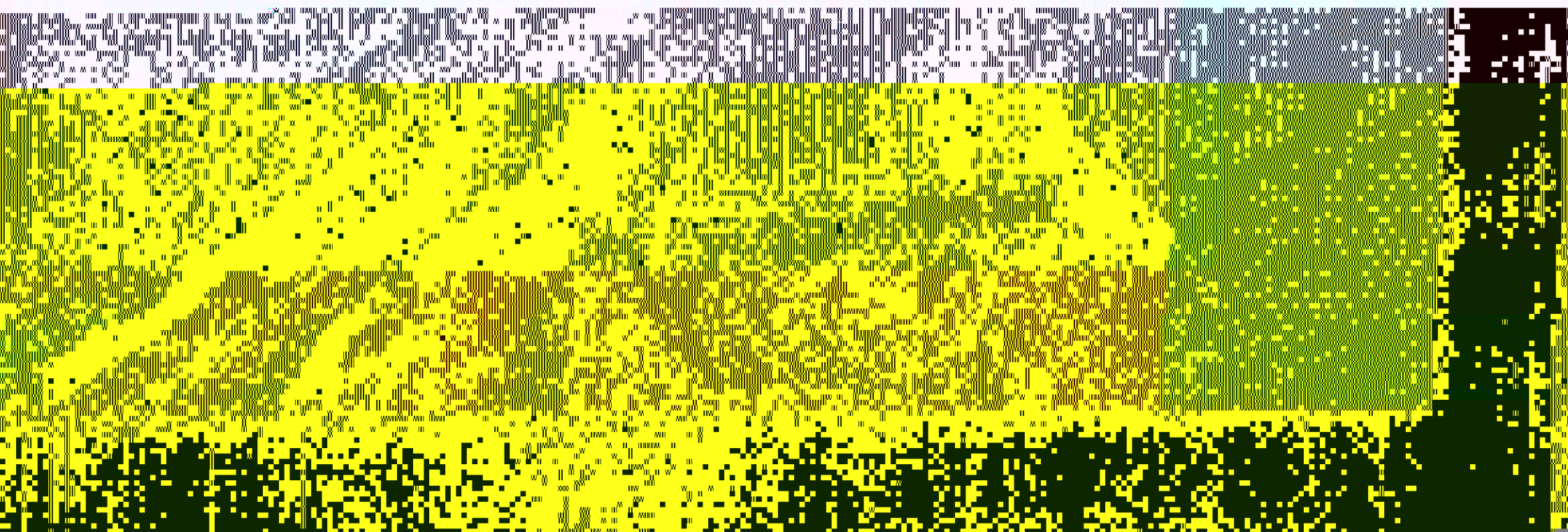


A S Pardha Saradhi
A S Pardha Saradhi
Company Secretary

Encl: As above

NMDC Limited

Financial Results 2021-22



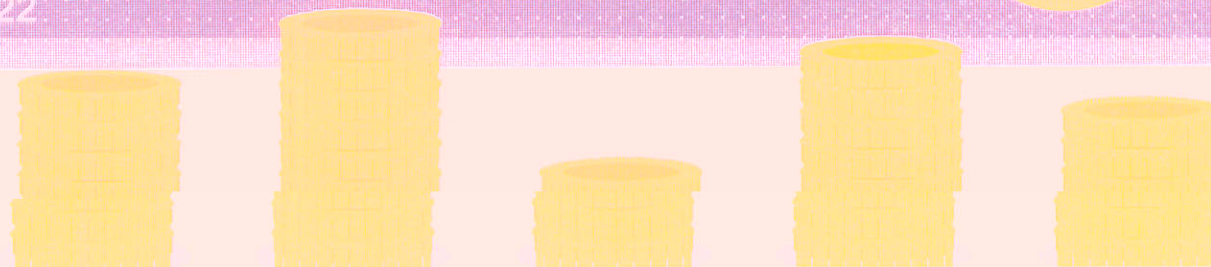
Disclaimer

- This presentation is issued by NMDC Limited (the "**Company**") for general information purposes only, without regard to specific objectives, suitability, financial situations and needs of any particular person and does not constitute any recommendation or form part of any offer or invitation or inducement to sell or issue, or any solicitation of any offer to purchase or subscribe for, any securities of the Company, nor shall it or any part of it or the fact of its distribution form the basis of, or be relied on in connection with, any contract or commitment therefor. This presentation does not solicit any action based on the material contained herein. Nothing in this presentation is intended by the Company to be construed as legal, accounting or tax advice.
- **This presentation has been prepared by the Company based upon information available in the public domain.** This presentation has not been approved and will not or may not be reviewed or approved by any statutory or regulatory authority in India or by any Stock Exchange in India. This presentation may include statements which may constitute forward-looking statements. The actual results could differ materially from those projected in any such forward-looking statements because of various factors. The Company assumes no responsibility to publicly amend, modify or revise any forward-looking statements, on the basis of any subsequent developments, information or events, or otherwise.
- This presentation contains certain forward-looking statements relating to the business, financial performance, strategy and results of the Company and/or the industry in which it operates. Forward-looking statements are statements concerning future circumstances and results, and any other statements that are not historical facts, sometimes identified by the words "believes", "expects", "predicts", "intends", "projects", "plans", "estimates", "aims", "foresees", "anticipates", "targets", and similar expressions. The forward-looking statements, including those cited from third party sources, contained in this presentation are based on numerous assumptions and are uncertain and subject to risks. A multitude of factors including, but not limited to, changes in demand, competition and technology, can cause actual events, performance or results to differ significantly from any anticipated development. Neither the Company nor its affiliates or advisors or representatives nor any of its or their parent or subsidiary undertakings or any such person's officers or employees guarantees that the assumptions underlying such forward-looking statements are free from errors nor does either accept any responsibility for the future accuracy of the forward-looking statements contained in this Presentation or the actual occurrence of the forecasted developments. Forward-looking statements speak only as of the date of this presentation. As a result, the Company expressly disclaims any obligation or undertaking to release any update or revisions to any forward-looking statements in this presentation as a result of any change in expectations or any change in events, conditions, assumptions or circumstances on which these forward looking statements are based.
- The information contained in these materials has not been independently verified. None of the Company, its Directors, Promoter or affiliates, nor any of its or their respective employees, advisers or representatives or any other person accepts any responsibility or liability whatsoever, whether arising in tort, contract or otherwise, for any errors, omissions or inaccuracies in such information or opinions or for any loss, cost or damage suffered or incurred howsoever arising, directly or indirectly, from any use of this document or its contents or otherwise in connection with this document, and makes no representation or warranty, express or implied, for the contents of this document including its accuracy, fairness, completeness or verification or for any other statement made or purported to be made by any of them, or on behalf of them, and nothing in this document or at this presentation shall be relied upon as a promise or representation in this respect, whether as to the past or the future. Past performance is not a guide for future performance. The information contained in this presentation is current, and if not stated otherwise, made as of the date of this presentation. The Company undertake no obligation to update or revise any information in this presentation as a result of new information, future events or otherwise. Any person/ party intending to provide finance/ invest in the shares/ businesses of the Company shall do so after seeking their own professional advice and after carrying out their own due diligence procedure to ensure that they are making an informed decision.
- This presentation is strictly confidential and may not be copied or disseminated, in whole or in part, and in any manner or for any purpose. No person is authorized to give any information or to make any representation not contained in or inconsistent with this presentation and if given or made, such information or representation must not be relied upon as having been authorized by any person. Failure to comply with this restriction may constitute a violation of the applicable securities laws. This presentation is not intended for distribution or publication in the United States. Neither this document nor any part or copy of it may be distributed, directly or indirectly, in the United States. The distribution of this document in certain jurisdictions may be restricted by law and persons in to whose possession this presentation comes should inform themselves about and observe any such restrictions. By reviewing this presentation, you agree to be bound by the foregoing limitations. You further represent and agree that (i) you are located outside the United States and you are permitted under the laws of your jurisdiction to receive this presentation or (ii) you are located in the United States and are a "qualified institutional buyer" (as defined in Rule 144A under the Securities Act of 1933, as amended (the "**Securities Act**").
- This presentation is not an offer to sell or a solicitation of any offer to buy the securities of the Company in the United States or in any other jurisdiction where such offer or sale would be unlawful. Securities may not be offered, sold, resold, pledged, delivered, distributed or transferred, directly or indirectly, in to or within the United States absent registration under the Securities Act, except pursuant to an exemption from, or in a transaction not subject to, the registration requirements of the Securities Act and in compliance with any applicable securities laws of any state or other jurisdiction of the United States. The Company's securities have not been and will not be registered under the Securities Act.

Best Ever Q1 Quarter Performance

“since inception”

Q1 of FY 22



Historic Physical Performance in FY 22 (Q1 Vs Q1)

50.6%

Increase in Sales

94.49 LT (CPLY: 62.75 LT)

previous best: 91.84 LT {FY'18 (Q1)}



34.9%

Increase in Production

89.10 LT (CPLY: 66.05 LT)

previous best: 85.27 LT {FY'18 (Q1)}

Spectacular Financial Performance in FY 22 (Q1 vs Q1)

Revenue from Operations



236%

₹6512 cr
(1938 cr)

@ Avg. Realisation
₹ 6823/T (CPLY: ₹ 3064/T)

₹ 3475 cr.

Prev. Best - FY'15 (Q1)

EBITDA



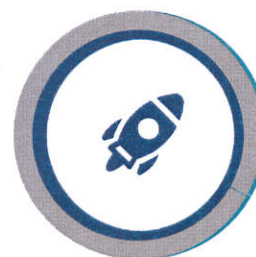
423%

₹ 4322 cr
(826 cr)

₹ 4574/Ton of Sales
(CPLY: ₹ 1316/T)

₹ 2944 cr.

PBT



462%

₹ 4263 cr
(759 cr)

₹ 2904cr

Prev. Best - FY'15 (Q1)

PAT

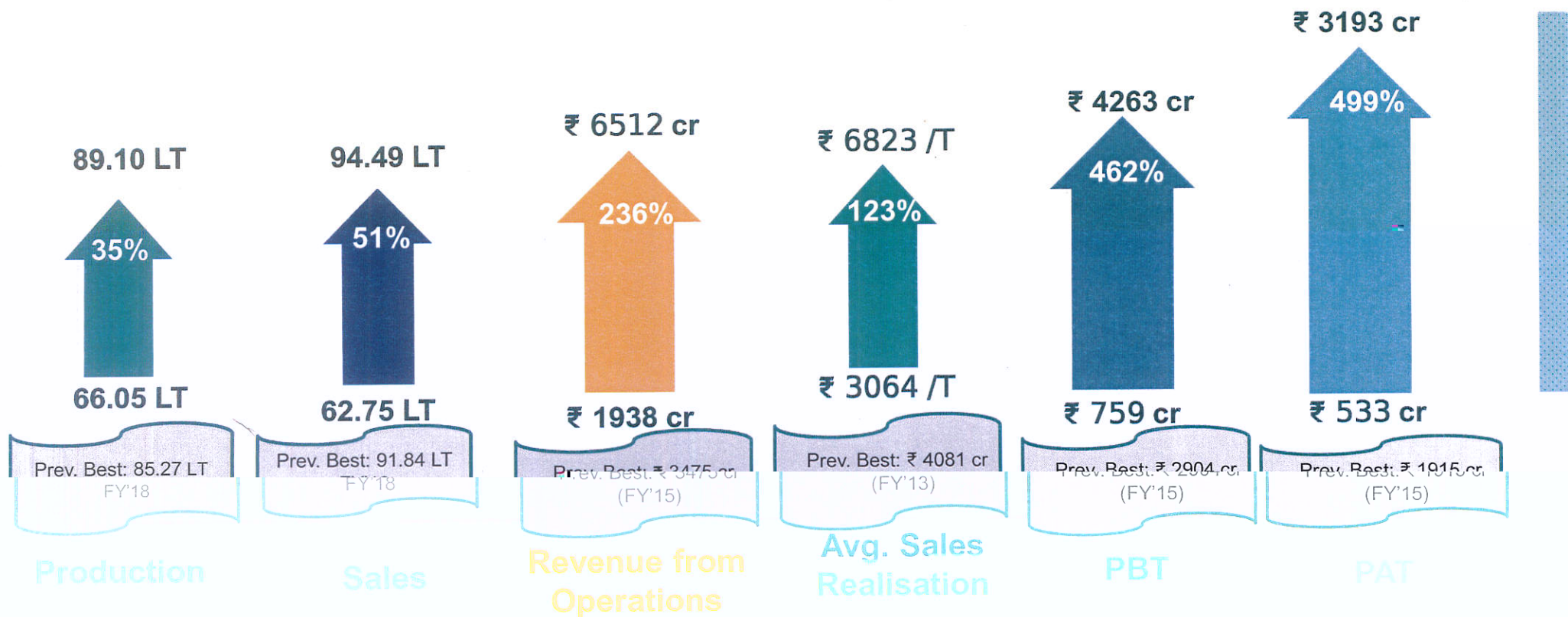


499%

₹ 3193 cr
(533cr)

₹ 1915 cr

Robust Growth FY'22 Q1 on FY'21 Q1



Key Financial Indicators (Fy 22 Q1 vs Fy 21 Q1)

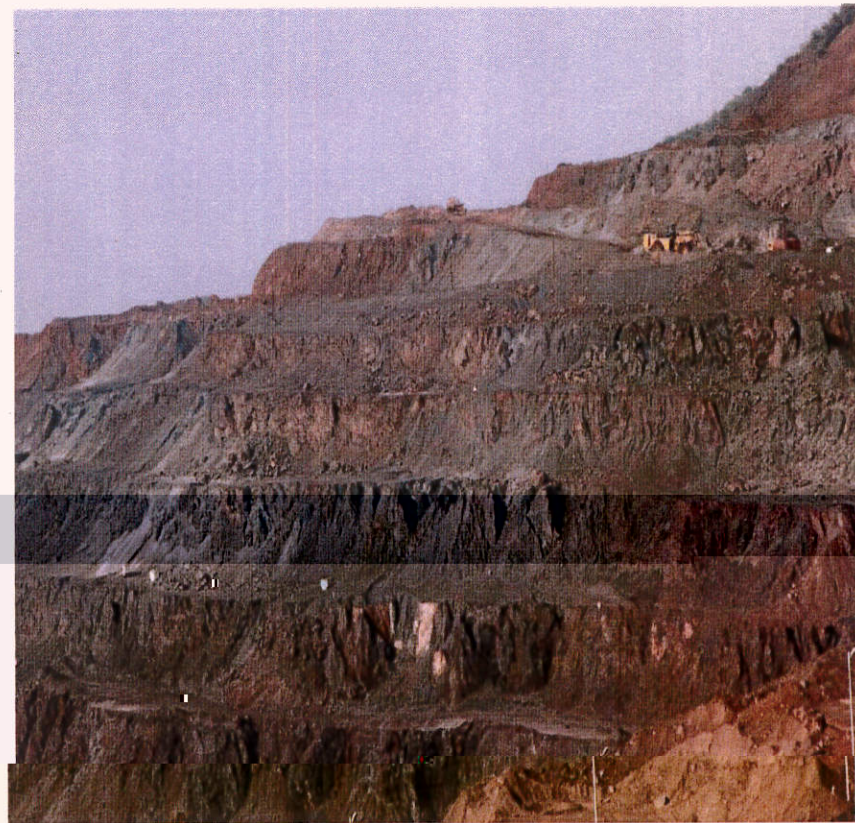
EPS: ₹ 10.89 (1.74)

BVPS: ₹ 112 (92)

EBITDA Margin: 66% (43%)

ROCE: 29 % (7%)

RONW: 10 % (2%)



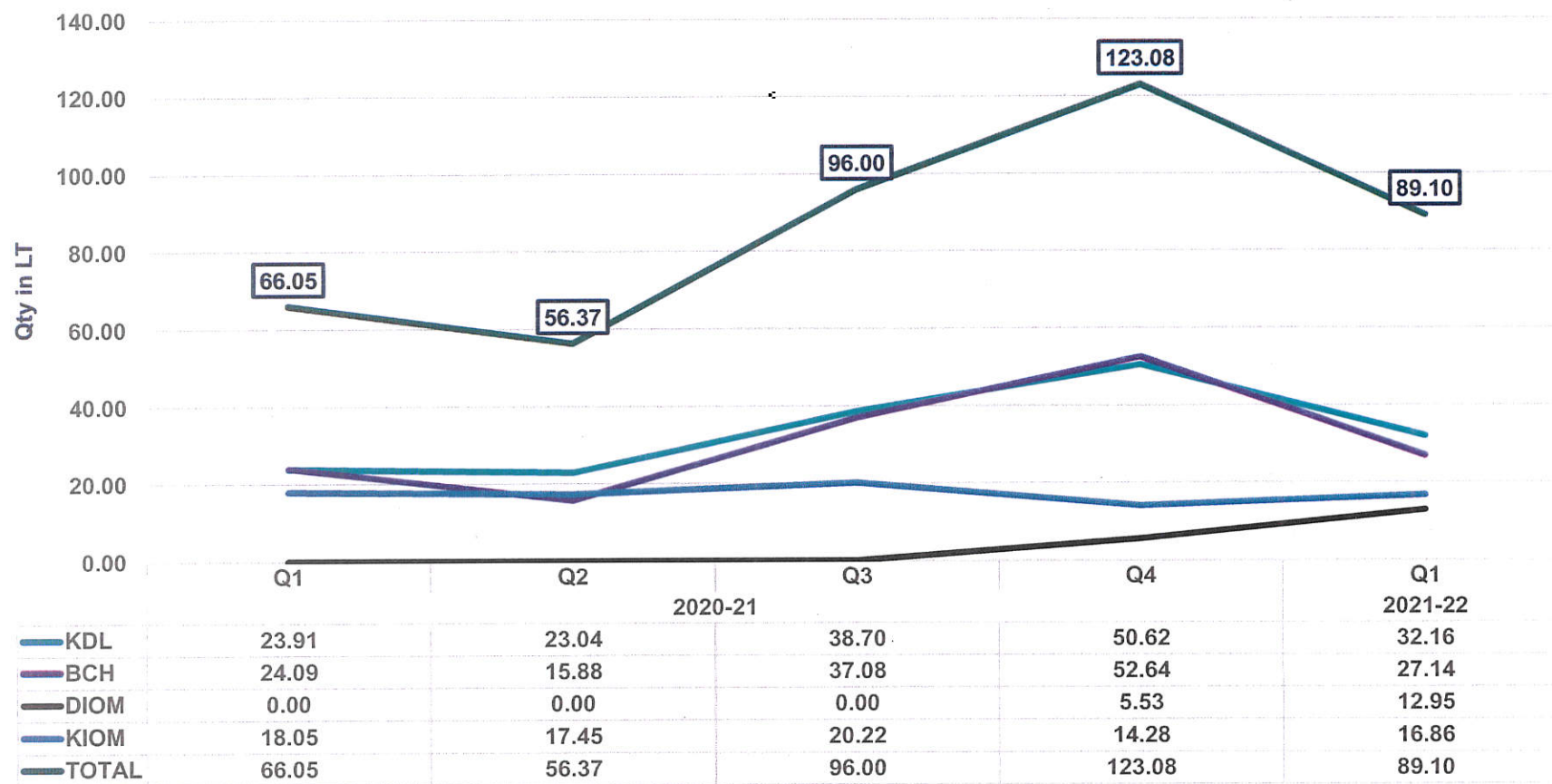
Performance of Fy 22 (Q1) on Fy 21 (Q1)

Particulars	2021-22 (Q1)	2020-21(Q1)	Variance	(%)
Iron Ore Production (LT)	89.10	66.05	23.05	35
Iron Ore Sales (LT)	94.49	62.75	31.74	51
- Export Sales (LT)	-	3.00	(3.00)	(100)
- Domestic Sales (LT)	94.49	59.75	34.74	58
Average Domestic Realisation (Rs./T)	6,813	2,845	3,968	139
Average Sales Realisation (Rs./T)	6,823	3,064	3,759	123
Financials (Rs. Crore)				
Iron ore Sales	6,447	1,923	4,524	235
Revenue from Operations	6,512	1,938	4,574	236
Interest Income	87	37	50	135
Other Income	57	34	23	68
Total Income	6,656	2,009	4,647	231
Total Expenses	2,393	1,249	1,144	92
EBITDA & Margin (%)	4,322 (66%)	826 (43%)	3,496	423
Profit Before Tax	4,263	759	3,504	462
Profit After Tax	3,193	533	2,660	499

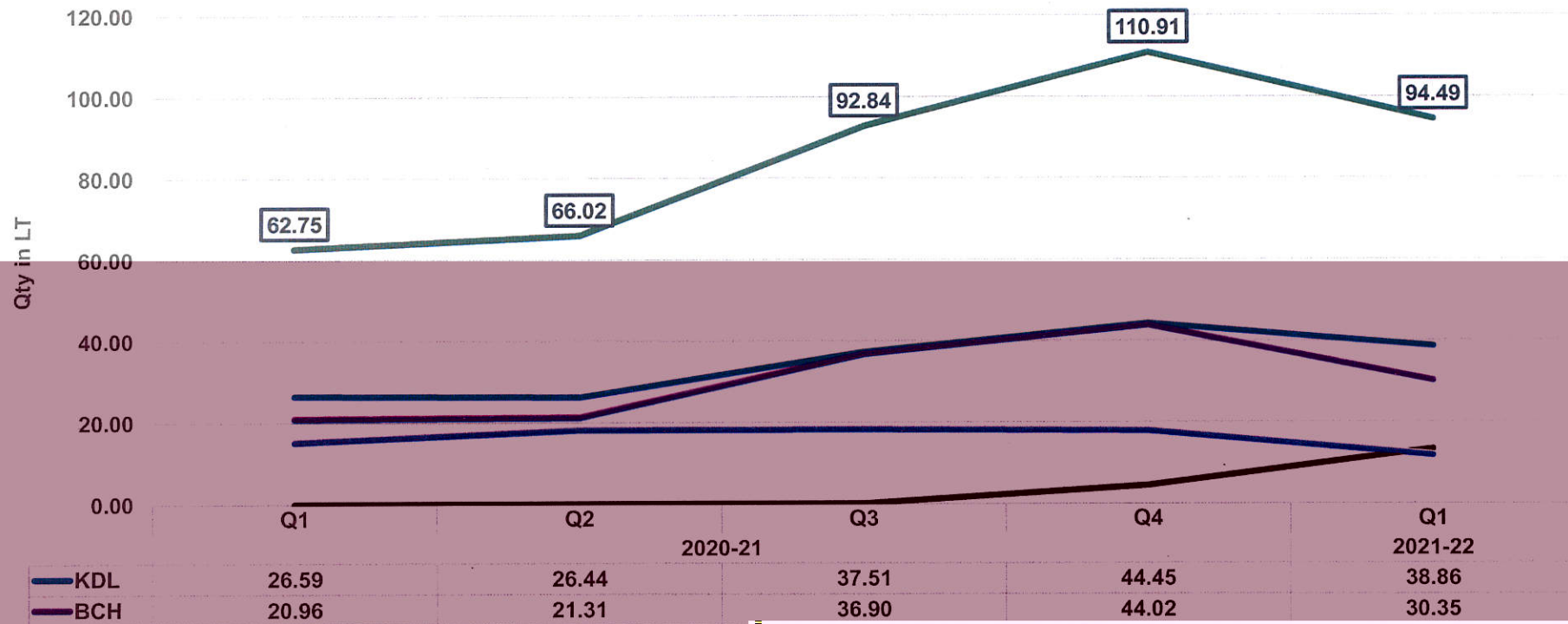
Performance of Fy 22 (Q1) on Fy 21 (Q4)

Particulars	2021-22 (Q1)	2020-21(Q4)	Variance	(%)
Iron Ore Production (LT)	89.10	123.08	(33.98)	(28)
Iron Ore Sales (LT)	94.49	110.91	(16.42)	(15)
- Export Sales (LT)	-	8.20	(8.20)	(100)
- Domestic Sales (LT)	94.49	102.71	(8.22)	(8)
Average Domestic Realisation (Rs./T)	6,813	5,941	872	15
Average Sales Realisation (Rs./T)	6,823	6,138	685	11
Financials (Rs. Crore)				
Iron ore Sales	6,447	6,807	(360)	(5)
Revenue from Operations	6,512	6,848	(336)	(5)
Interest Income	87	47	40	85
Other Income	57	38	19	50
Total Income	6,656	6,933	(277)	(4)
Total Expenses	2,393	2,666	(273)	(10)
EBITDA & Margin (%)	4,322 (66%)	4,330 (63%)	(8)	-
Profit Before Tax	4,263	4,269	(6)	-
Profit After Tax	3,193	2,838	355	13

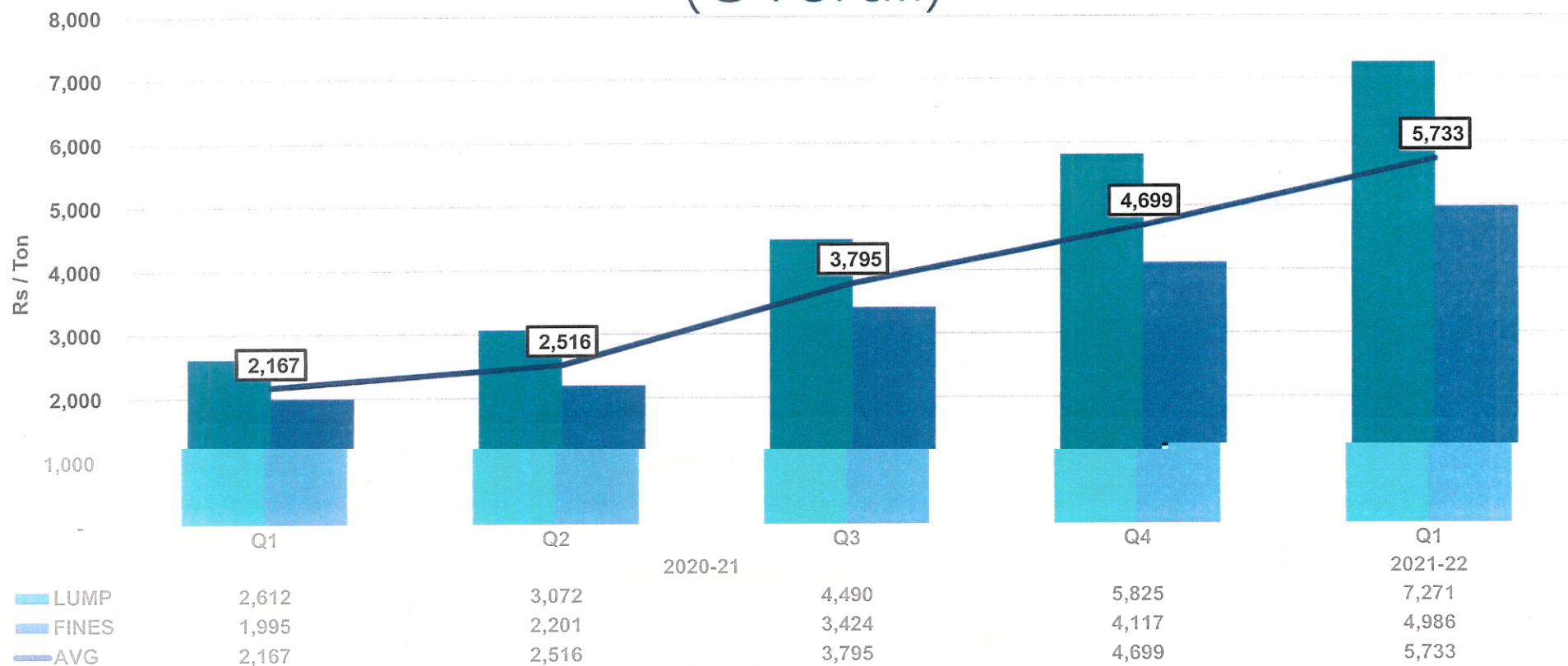
Iron Ore Production Trend



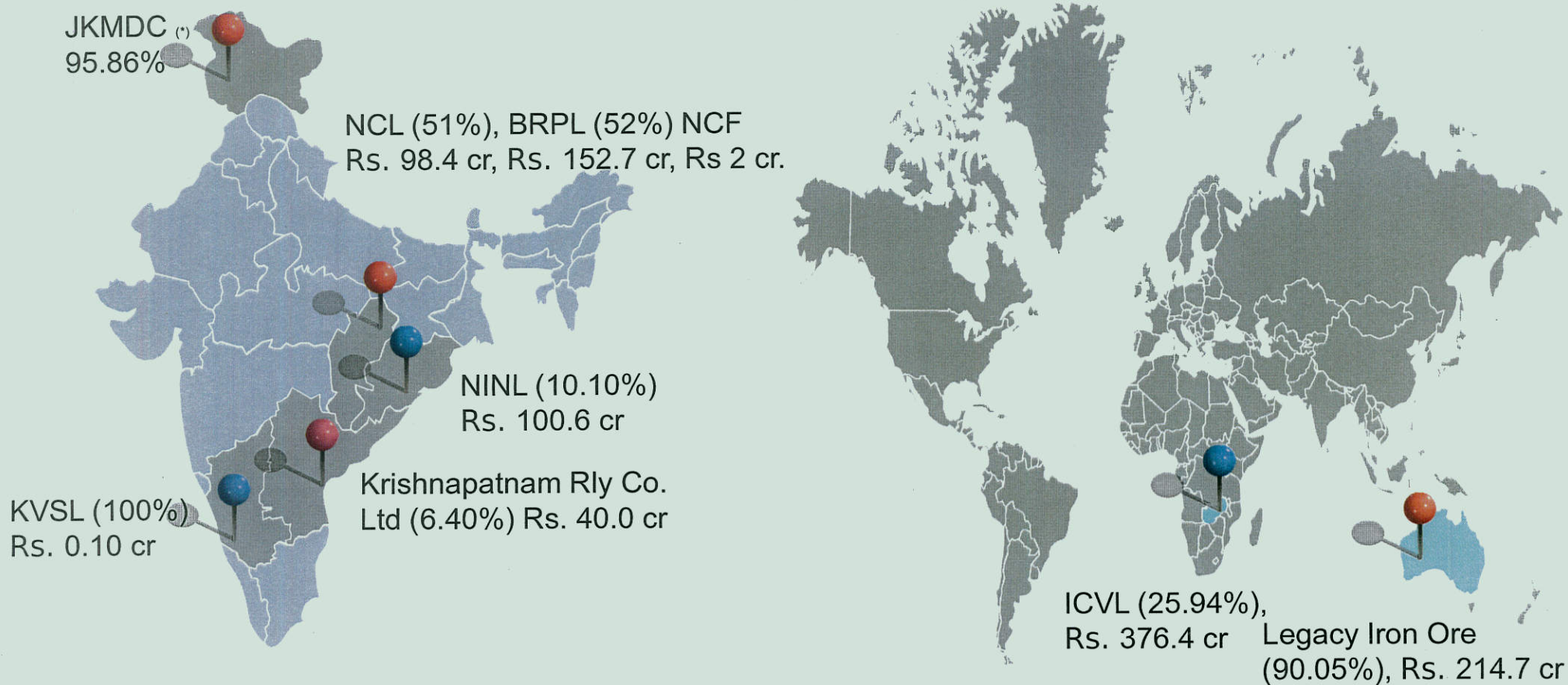
Iron Ore Sales Trend



Average Basic Domestic Price of Iron Ore (Overall)



Major Investment in Subsidiaries, JVs & Associates



Total Investments - Rs. 984.93crore

(*) Investment derated

Map is for general reference purpose only

Details of Top 25 Shareholders as on 31-07-2021

Sl. No.	Shareholder	No. of Shares	% Holding
1	PRESIDENT OF INDIA	1781633571	60.79
2	LIFE INSURANCE CORPORATION OF INDIA	394591074	13.46
3	NIPPON LIFE INDIA TRUSTEE LTD-A/C NIPPON INDIA ARBITRAGE FUND	75705267	2.58
4	ADITYA BIRLA SUN LIFE TRUSTEE PRIVATE LIMITED A/C ADITYA BIRLA SUN LIFE NIFTY NEXT 50 ETF	22970057	0.78
5	LIC OF INDIA MARKET PLUS NON UNIT FUND	20294358	0.69
6	STATE BANK OF INDIA	11504626	0.39
7	CANARA BANK-MUMBAI	11172547	0.38
8	VANGUARD TOTAL INTERNATIONAL STOCK INDEX FUND	11069767	0.38
9	VANGUARD EMERGING MARKETS STOCK INDEX FUND, A SERIES OF VANGUARD INTERNATIONAL EQUITY INDEX FUNDS	10776201	0.37
10	EDGBASTON ASIAN EQUITY TRUST	10767000	0.37
11	LSV EMERGING MARKETS EQUITY FUND LP	10021304	0.34
12	NPS TRUST- A/C SBI PENSION FUND SCHEME - CENTRAL GOVT	8443135	0.29
13	THE NEW INDIA ASSURANCE COMPANY LIMITED	8206685	0.28
14	UNITED INDIA INSURANCE COMPANY LIMITED	8184300	0.28
15	SOCIETE GENERALE - ODI	8127166	0.28
16	THE EDGBASTON ASIAN EQUITY (JERSEY) TRUST	7975863	0.27
17	MORGAN STANLEY ASIA (SINGAPORE) PTE.	7587716	0.26
18	KOTAK EQUITY ARBITRAGE FUND	7218144	0.25
19	SBI ARBITRAGE OPPORTUNITIES FUND	7030910	0.24
20	BANK OF INDIA	7005034	0.24
21	STICHTING DEPOSITARY APG EMERGING MARKETS EQUITY POOL	6671976	0.23
22	HSBC POOLED INVESTMENT FUND - HSBC POOLED VC ASIA/PACIFIC JAPAN EQUITY FUND	6541033	0.22
23	THE ORIENTAL INSURANCE COMPANY LIMITED	6287874	0.21
24	NATIONAL INSURANCE COMPANY LTD	6210900	0.21
25	RADHAKISHAN SHIVKISHAN DAMANI	5425584	0.19
	TOTAL	2461422092	83.98

#Ispati Irada

THANKS!

NMDC Mines
India Shines

Harr ek Kaam Desh Ke Naam!